

SECTION F.

FRONT SERVO

TITLE

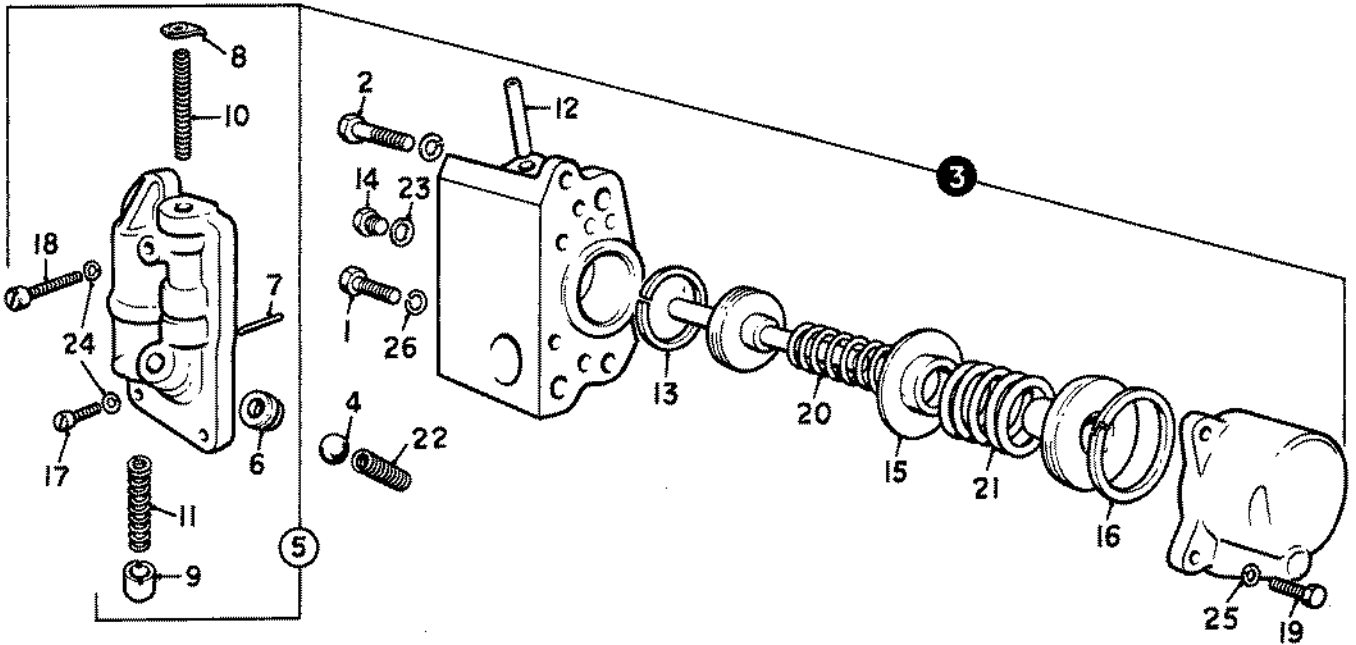
GEARBOX SERIES

PAGE

FRONT SERVO

ALL

E.I



Ref.	Part No.	Description	No. off
(1)	UA.206/R	Screw, servo to gearbox	1
(2)	UA.214/R	Screw, servo to gearbox	1
(3)	UG.1484	SERVO, FRONT—ASSY.	1
(4)	RG.6627	Ball, non-return valve	1
(5)	R.6003	BODY, VALVE, FRONT SERVO— ASSY.	1
(6)	UG.1305	Sleeve, valve ball	1
(7)	UG.628	Pin, spring retainer	1
(8)	UG.622	Plate, exhaust valve spring	1
(9)	UG.371	Retainer, quick release valve spring	1
(10)	UG.254	Spring, main exhaust valve	1
(11)	UG.720	Spring, quick release valve	1
(12)	UG.190	Pipe, rear to front servo	1
(13)	UG.185	Ring, front band apply piston.	1
(14)	UA.1155/R	Plug, blanking	1
(15)	UG.626	Retainer, return springs	1
(16)	UG.627	Ring, band release piston	1
(17)	UG.647	Screw, valve body	2
(18)	UG.718	Screw, valve body	1
(19)	UA.103/R	Screw, band release cylinder	3
(20)	UG.727	Spring, compensator piston return	1
(21)	UG.726	Spring, band release piston return	1
(22)	UG.298	Spring, non-return valve ball	1
(23)	KB.1078	Washer, joint, blanking plug	1
(24)	K.9006/R	Washer, screw, valve body	3
(25)	K.9008/R	Washer, screw, band release cylinder	3
(26)	K.9010/R	Washer, screw, front servo	2

FRONT SERVO