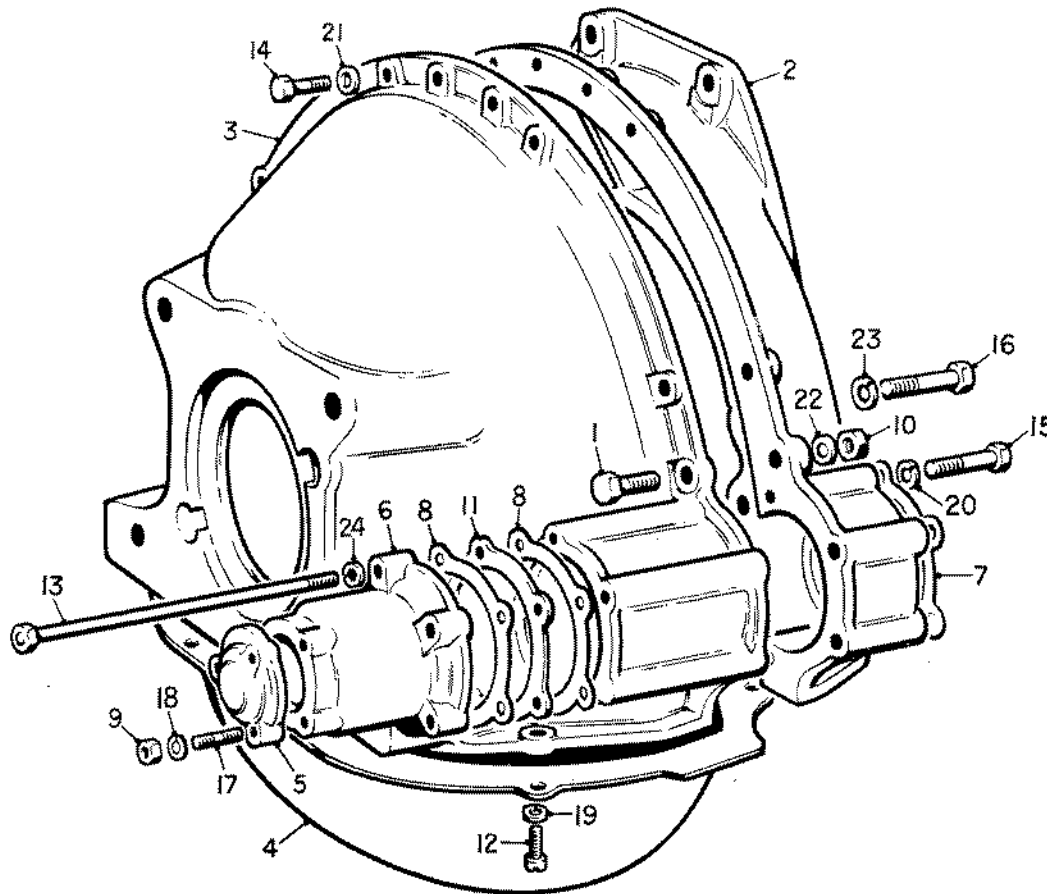


**SECTION C.**

**FLYWHEEL CASING**

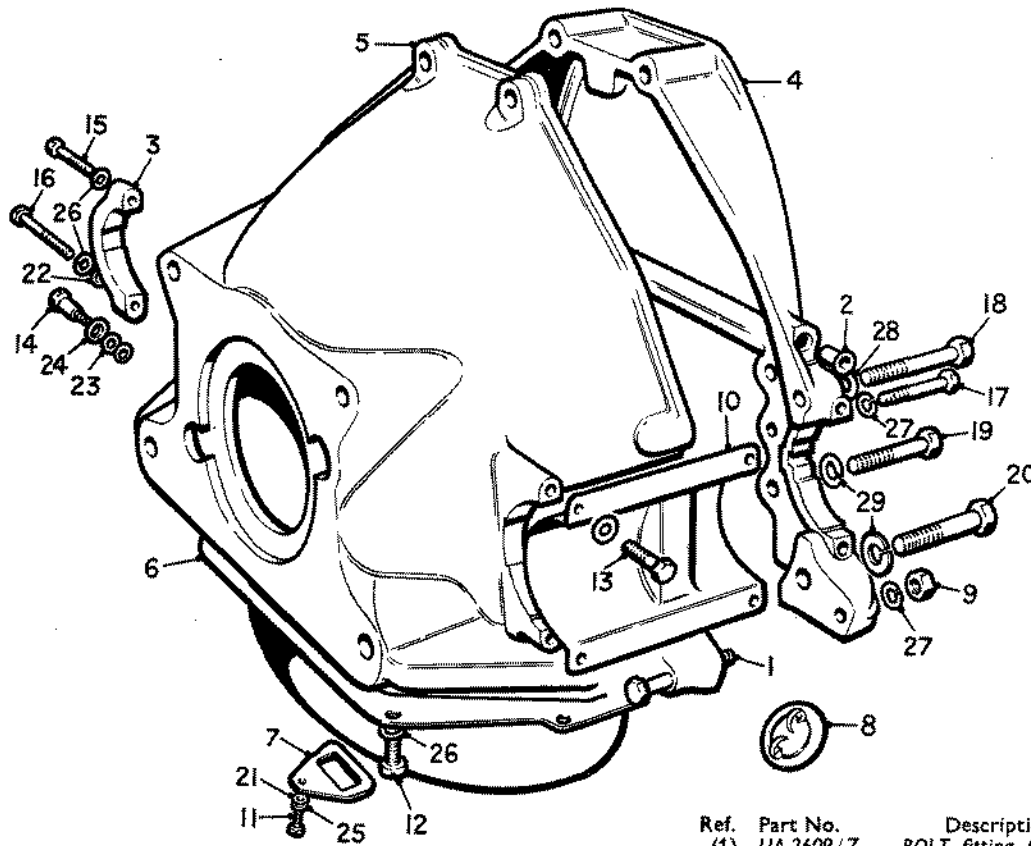
<b>TITLE</b>	<b>GEARBOX SERIES</b>	<b>PAGE</b>
FLYWHEEL CASING (Cast Iron)	C.	C.1
FLYWHEEL CASING (Aluminium)	C. C-C. C-E. C-P.	C.2
	C. C-C. C-E. C-EB. C-P. C-PC.	C.3
	SM. SM-C. C-SW. C-SWM.	C.4
	SM. SM-C. C-SWM.	C.5
	T.	C.6



**FLYWHEEL CASING  
(WITHOUT INERTIA RING)**

(CAST IRON FLYWHEEL CASING)

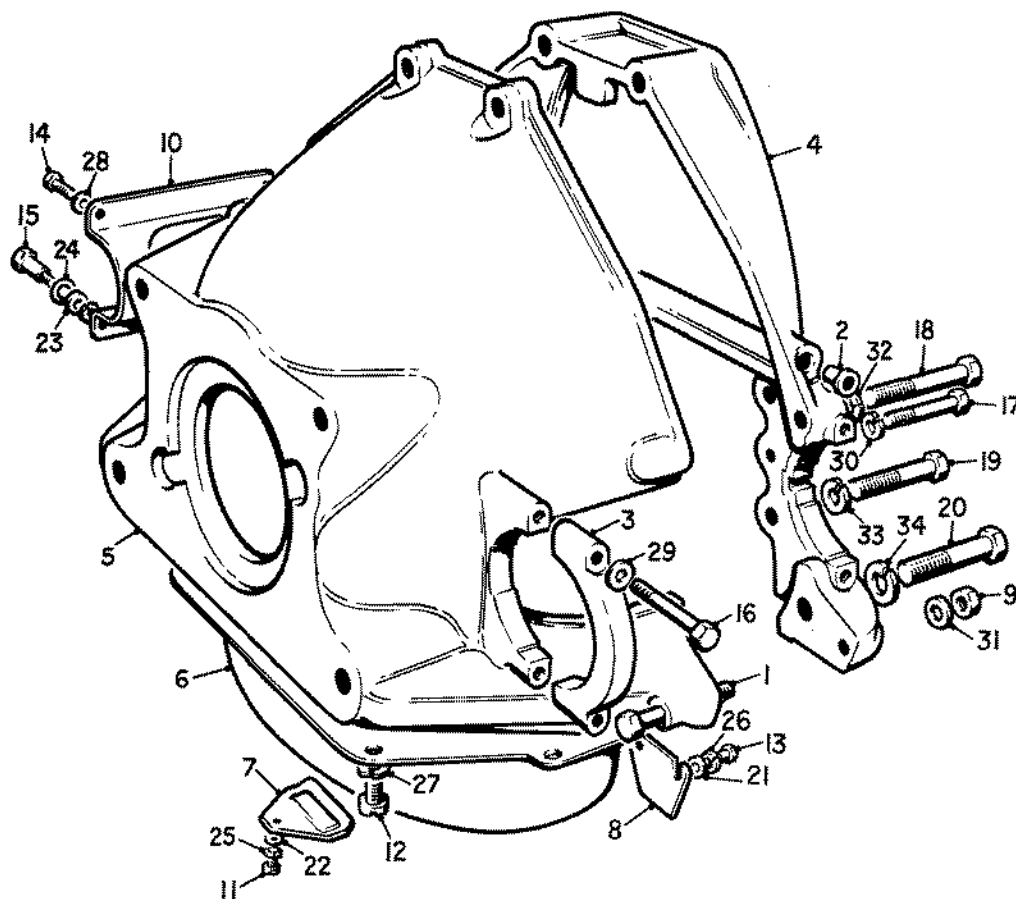
Ref.	Part No.	Description	No. off
(1)	UE.1007	BOLT, fitting, front to rear casings	2
(2)	UE.1002	CASING, front	1
(3)	UE.1001	CASING, rear	1
(4)	RE.13180	COVER, bottom, casing	1
(5)	GB.3315	COVER, end, bearing housing	1
(6)	GB.4351	HOUSING, bearing	1
(7)	RG.4443	JOINT, front casing to housing	1
(8)	RG.4456	JOINT, rear casing to distance plate and housing	2
(9)	K.4006/Z	NUT, stud, end cover	3
(10)	RE.22428	NUT, bolt, front to rear casings	2
(11)	GB.4349	PLATE, distance, bearing housing, .050" thick as reqd.	1
	GB.4348	PLATE, distance, bearing housing, .075" thick as reqd.	1
(12)	UA.2102/Z	SCREW, bottom cover	6
(13)	RG.3231A	SCREW, bearing housings (L.C.)	4
(14)	UA.155/Z	SCREW, flywheel casings	8
(15)	UA.160/Z	SCREW, flywheel casing to crankcase	2
(16)	UA.258/Z	SCREW, flywheel casing to crankcase	4
(17)	KB.254/Z	STUD, rear bearing housing	3
(18)	K.9006/Z	WASHER, stud, rear bearing housing	3
(19)	K.9008/Z	WASHER, screw, bottom cover	6
(20)	K.9009/Z	WASHER, screw, flywheel casing to crankcase	2
(21)	K.9009/Z	WASHER, screw, flywheel casings	8
(22)	K.9010/Z	WASHER, bolt, front to rear casings	2
(23)	K.9011/Z	WASHER, screw, flywheel casing to crankcase	4
(24)	K.3804/Z	WASHER, "Thackeray," bearing housing screws	4



**FLY WHEEL CASING  
(WITHOUT INERTIA RING)**

(ALUMINIUM FLYWHEEL CASING)

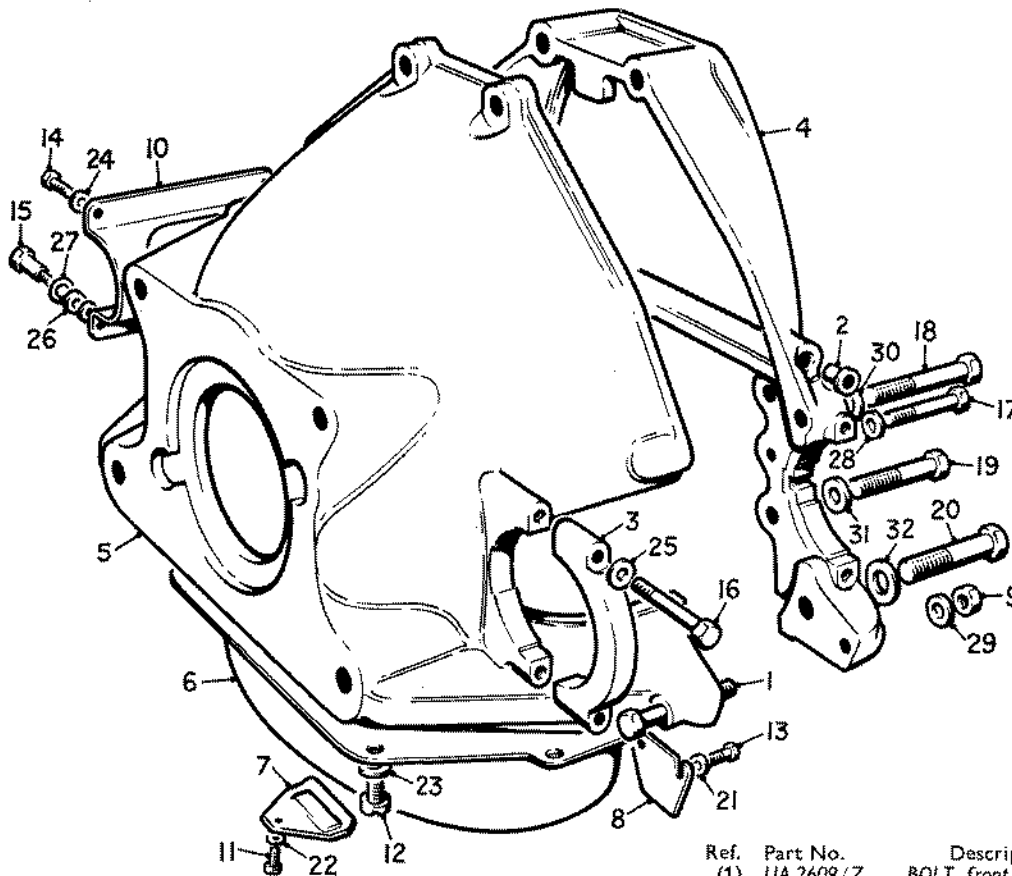
Ref.	Part No.	Description	No. off
(1)	UA.2609/Z	BOLT, fitting, front to rear casings	2
(2)	RF.9423	BUSH, Oilite, front casing	2
(3)	RE.18226	CAP, starter motor	2
(4)	UE.2675	CASING, front	1
(5)	UE.1008	CASING, rear	1
(6)	UE.1073	COVER, bottom,—assembly (L.C.)	1
	UE.1053	COVER, bottom,—assembly (R.C.)	1
(7)	UE.1054	COVER, timing, engine	1
(8)	RE.18224	COVER, timing, pointer	1
(9)	UA.302/Z	NUT, bolt, flywheel casings	2
(10)	RE.18225	PLATE, blanking, flywheel casings	1
(11)	K.1904/Z	SCREW, engine timing cover (L.C.)	1
	K.1907/Z	SCREW, engine timing cover (R.C.)	1
(12)	UA.2103/Z	SCREW, bottom cover	6
(13)	UA.103/Z	SCREW, blanking plate (L.C.)	3
	UA.103/Z	SCREW, blanking plate (R.C.)	4
(14)	UE.1072	SCREW, blanking plate (L.C.)	1
(15)	UA.112/Z	SCREW, starter motor cap (L.C.)	4
(16)	UA.113/Z	SCREW, starter motor cap (R.C.)	2
(17)	UA.160/Z	SCREW, flywheel casing to crankcase	2
(18)	UA.213/Z	SCREW, front to rear casings	2
(19)	UA.258/Z	SCREW, flywheel casing to crankcase	4
(20)	UA.264/Z	SCREW, front to rear casings	2
(21)	K.4404/Z	WASHER, screw, engine timing cover	1
(22)	K.4407/Z	WASHER, screw, starter motor cap	2
(23)	RG.8335	WASHER, isolating link (L.C.)	1
(24)	UA.1252/Z	WASHER, screw, isolating link (L.C.)	1
(25)	K.9006/Z	WASHER, screw, engine timing cover	1
(26)	K.9008/Z	WASHER, screw, bottom cover	6
	K.9008/Z	WASHER, screw, blanking plate (L.C.)	4
	K.9008/Z	WASHER, screw, blanking plate (R.C.)	4
	K.9008/Z	WASHER, screw, starter motor cap (R.C.)	4
	K.9008/Z	WASHER, screw, starter motor cap (L.C.)	4
(27)	K.9009/Z	WASHER, screw, front casing to crankcase	2
	K.9009/Z	WASHER, bolt, front to rear casings	2
(28)	K.9010/Z	WASHER, screw, front to rear casings	2
(29)	K.9011/Z	WASHER, screw, front casing to crankcase	4
	K.9011/Z	WASHER, screw, front to rear casings	2



Ref.	Part No.	Description	No. off	Ref.	Part No.	Description	No. off
(1)	UA.2609/Z	BOLT, fitting, front to rear casings	2	(17)	UA.160/Z	SCREW, casing to crankcase	2
(2)	RF.9423	BUSH, Oilite, front casing	2	(18)	UA.213/Z	SCREW, front to rear casings	2
(3)	RE.18226	CAP, starter motor	2	(19)	UA.258/Z	SCREW, casing to crankcase	4
(4)	UE.2675	CASING, front	1	(20)	UA.264/Z	SCREW, front to rear casings	2
(5)	UE.1008	CASING, rear	1	(21)	K.4404/Z	WASHER, screw, timing pointer cover	2
(6)	UE.1413	COVER, bottom,—assembly (L.C.)	1	(22)	K.4404/Z	WASHER, screw, engine timing cover	1
(7)	UE.1412	COVER, bottom,—assembly (R.C.)	1	(23)	K.4407/Z	WASHER, screw, starter motor cap (R.C.)	2
(8)	UE.1054	COVER, timing, engine	1	(24)	RG.8335	WASHER, isolating link (L.C.)	1
(9)	UE.1415	COVER, timing, pointer	1	(25)	UA.1252/Z	WASHER, screw, isolating link (L.C.)	1
(10)	UA.302/Z	NUT, bolt, flywheel casing	2	(26)	K.9006/Z	WASHER, screw, engine timing cover	1
(11)	UE.1416	PLATE, blanking, flywheel casings	1	(27)	K.9006/Z	WASHER, screw, timing pointer cover	2
(12)	K.1904/Z	SCREW, engine timing cover (L.C.)	1	(28)	K.9008/Z	WASHER, screw, bottom cover	6
(13)	K.1907/Z	SCREW, engine timing cover (R.C.)	1	(29)	K.9008/Z	WASHER, screw, blanking plate (L.C.)	4
(14)	UA.2103/Z	SCREW, bottom cover	6	(30)	K.9008/Z	WASHER, screw, blanking plate (R.C.)	4
(15)	KC.170/Z	SCREW, timing pointer cover	2	(31)	K.9008/Z	WASHER, screw, starter motor cap (R.C.)	4
(16)	UA.103/Z	SCREW, blanking plate (L.C.)	3	(32)	K.9008/Z	WASHER, screw, starter motor (L.C.)	4
(17)	UA.103/Z	SCREW, starter motor blanking plate (R.C.)	4	(33)	K.9009/Z	WASHER, screw, casing to crankcase	2
(18)	UE.1072	SCREW, blanking plate (L.C.)	1	(34)	K.9009/Z	WASHER, bolt, front to rear casings	2
(19)	UA.112/Z	SCREW, starter motor cap (L.C.)	4				
(20)	UA.112/Z	SCREW, starter motor cap (R.C.)	2				
(21)	UA.113/Z	SCREW, starter motor cap (R.C.)	2				

**FLYWHEEL CASING**

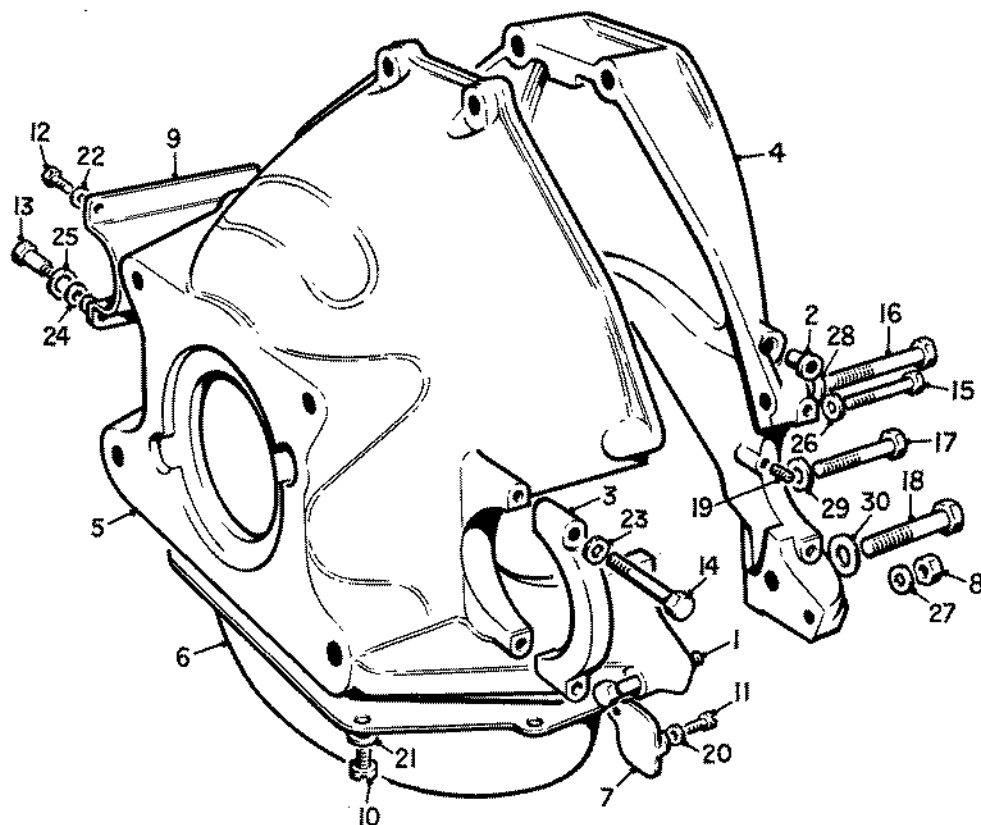
WITH INERTIA RING—STARTER RING INTEGRAL WITH  
FLYWHEEL TIMING ORIFICE IN BOTTOM COVER ASSEMBLY  
OFFSET



**FLYWHEEL CASING**

WITH INERTIA RING—STARTER RING INTEGRAL WITH  
FLYWHEEL TIMING ORIFICE IN BOTTOM COVER ASSEMBLY  
AT B.D.C.

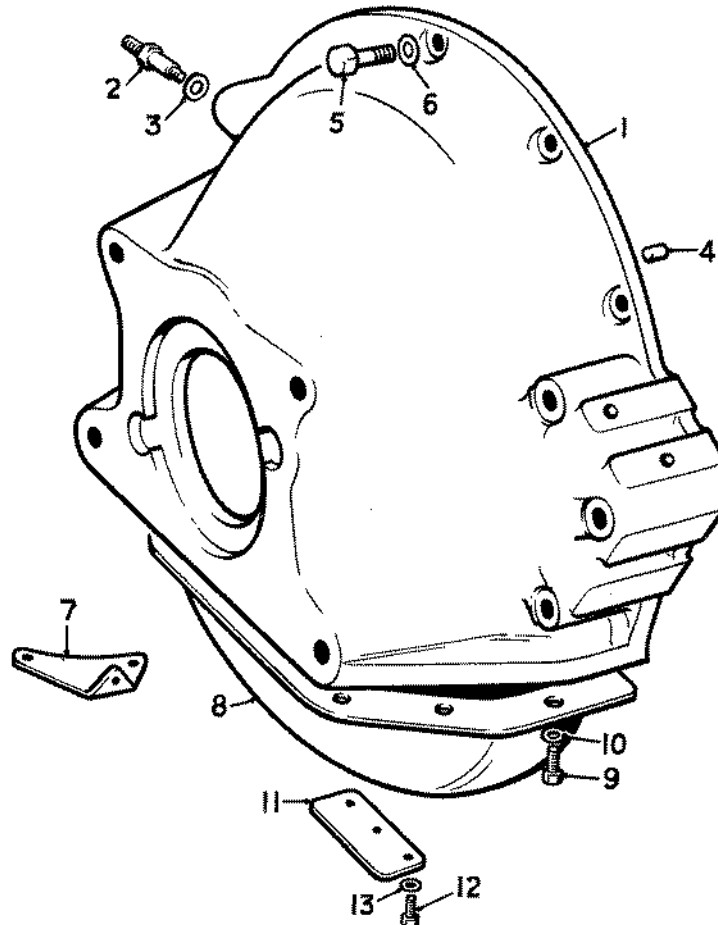
Ref.	Part No.	Description	No. off
(1)	UA.2609/Z	BOLT, front to rear casings	2
(2)	RF.9423	BUSH, Oilite, front casing	2
(3)	RE.18226	CAP, starter motor	2
(4)	UE.2675	CASING, front	1
(5)	UE.1008	CASING, rear	1
(6)	UE.2490	COVER, bottom,—assembly (L.C.)	1
	UE.2489	COVER, bottom,—assembly (R.C.)	1
(7)	UE.1054	COVER, timing, engine	1
(8)	UE.1415	COVER, timing, pointer	1
(9)	UA.302/Z	NUT, bolt, flywheel casings	2
(10)	UE.1416	PLATE, blanking, flywheel casings	1
(11)	K.1904/Z	SCREW, engine timing cover (L.C.)	1
	K.1907/Z	SCREW, engine timing cover (R.C.)	1
(12)	UA.2103/Z	SCREW, bottom cover	6
(13)	KC.170/Z	SCREW, timing pointer cover	2
(14)	UA.103/Z	SCREW, blanking plate (L.C.)	3
	UA.103/Z	SCREW, blanking plate (R.C.)	4
(15)	UE.1072	SCREW, blanking plate (L.C.)	1
(16)	UA.112/Z	SCREW, starter motor cap (L.C.)	4
	UA.112/Z	SCREW, starter motor cap (R.C.)	2
	UA.113/Z	SCREW, starter motor cap (R.C.)	2
(17)	UA.160/Z	SCREW, casing to crankcase	2
(18)	UA.213/Z	SCREW, front to rear casings	2
(19)	UA.258/Z	SCREW, casing to crankcase	4
(20)	UA.264/Z	SCREW, front to rear casings	2
(21)	K.4404/Z	WASHER, screw, timing pointer cover	2
(22)	K.4404/Z	WASHER, screw, engine timing cover	1
(23)	UA.1251/Z	WASHER, screw, bottom cover	6
(24)	UA.1251/Z	WASHER, screw, blanking plate (L.C.)	4
	UA.1251/Z	WASHER, screw, blanking plate (R.C.)	4
(25)	UA.1251/Z	WASHER, screw, starter motor cap	4
(26)	RG.8335	WASHER, plain, isolating link (L.C.)	1
(27)	UA.1252/Z	WASHER, screw, isolating link (L.C.)	1
(28)	UA.1252/Z	WASHER, screw, casing to crankcase	2
(29)	UA.1252/Z	WASHER, bolt, front to rear casings	2
(30)	UA.1253/Z	WASHER, screw, front to rear casings	2
(31)	UA.1254/Z	WASHER, screw, casing to crankcase	4
(32)	UA.1254/Z	WASHER, screw, front to rear casings	2



**FLYWHEEL CASING**

WITH INERTIA RING—STARTER RING INTEGRAL WITH  
INERTIA RING TIMING ORIFICE IN BOTTOM COVER ASSEMBLY  
AT B.D.C.

Ref.	Part No.	Description	No. off
(1)	UA.2609/Z	BOLT, fitting, front to rear casings	2
(2)	RF.9423	BUSH, Oilite, front casing	2
(3)	UE.1692	CAP, starter motor	2
(4)	UE.1691	CASING, front	1
(5)	UE.1690	CASING, rear	1
(6)	UE.1518	COVER, bottom,—assembly (L.C.)	1
(7)	UE.1516	COVER, bottom,—assembly (R.C.)	1
(8)	UE.1585	COVER, timing, pointer	1
(9)	UA.302/Z	NUT, bolt, front to rear casings	2
(10)	UE.1416	PLATE, blanking, flywheel casings	1
(11)	UA.2103/Z	SCREW, bottom cover	6
(12)	K.1907/Z	SCREW, timing pointer cover	2
(13)	UA.103/Z	SCREW, blanking plate (L.C.)	3
(14)	UA.103/Z	SCREW, blanking plate (R.C.)	4
(15)	UE.1072	SCREW, blanking plate (L.C.)	1
(16)	UA.112/Z	SCREW, starter motor (L.C.)	4
(17)	UA.112/Z	SCREW, starter motor cap (R.C.)	2
(18)	UA.113/Z	SCREW, starter motor cap (R.C.)	2
(19)	UA.160/Z	SCREW, casing to crankcase	2
(20)	UA.213/Z	SCREW, front to rear casings	2
(21)	UA.258/Z	SCREW, casing to crankcase	4
(22)	UA.264/Z	SCREW, front to rear casings	2
(23)	UE.1693	SCREW, locating, starter motor drive	1
(24)	UA.2051/Z	WASHER, screw, timing pointer cover	2
(25)	UA.1251/Z	WASHER, screw, bottom cover	6
(26)	UA.1251/Z	WASHER, screw, blanking plate (L.C.)	4
(27)	UA.1251/Z	WASHER, screw, blanking plate (R.C.)	4
(28)	UA.1251/Z	WASHER, screw, starter motor cap	4
(29)	RG.8335	WASHER, plain, isolating link (L.C.)	1
(30)	UA.1252/Z	WASHER, screw, isolating link (L.C.)	1
(31)	UA.1252/Z	WASHER, screw, casing to crankcase	2
(32)	UA.1252/Z	WASHER, bolt, front to rear casings	2
(33)	UA.1253/Z	WASHER, screw, front to rear casings	2
(34)	UA.1254/Z	WASHER, screw, casing to crankcase	4
(35)	UA.1254/Z	WASHER, screw, front to rear casing	2



Ref.	Part No.	Description	No. off
(1)	UE.8065	BELL HOUSING, assembly	R.H. cars 1
(2)	UE.8006	Pivot, lever, throttle control	1
(3)	UA.1253/Z	Washer, pivot pin	1
(4)	UE.5726	Dowel, crankcase	2
	UE.7564	BELL HOUSING, assembly	L.H. cars 1
	UE.7800	Stop bracket, lever, throttle control	1
	UE.7811	Pivot, lever, throttle control	1
	UE.5726	Dowel, crankcase	2
(5)	UA.210/Z	BOLT, crankcase to bell housing	3
(6)	UA.1253/Z	WASHER, bolt	3
(7)	UE.6829	BRACKET, breather pipe	1
(8)	UE.5713	COVER, BOTTOM, BELL HOUSING, assembly	1
(9)	UA.2102/Z	SCREW, bottom cover	6
(10)	UA.1251/Z	WASHER, screw	4
(11)	UE.5714	COVER, timing pointer	1
(12)	K.1907/Z	SCREW, timing cover	2
(13)	UA.2051/Z	WASHER, screw	2

**FLYWHEEL CASING**

Bentley "S.2" Type  
Silver Cloud "S.II"

T } Gearboxes  
T }