

SECTION H.

STEERING.

Containing :—

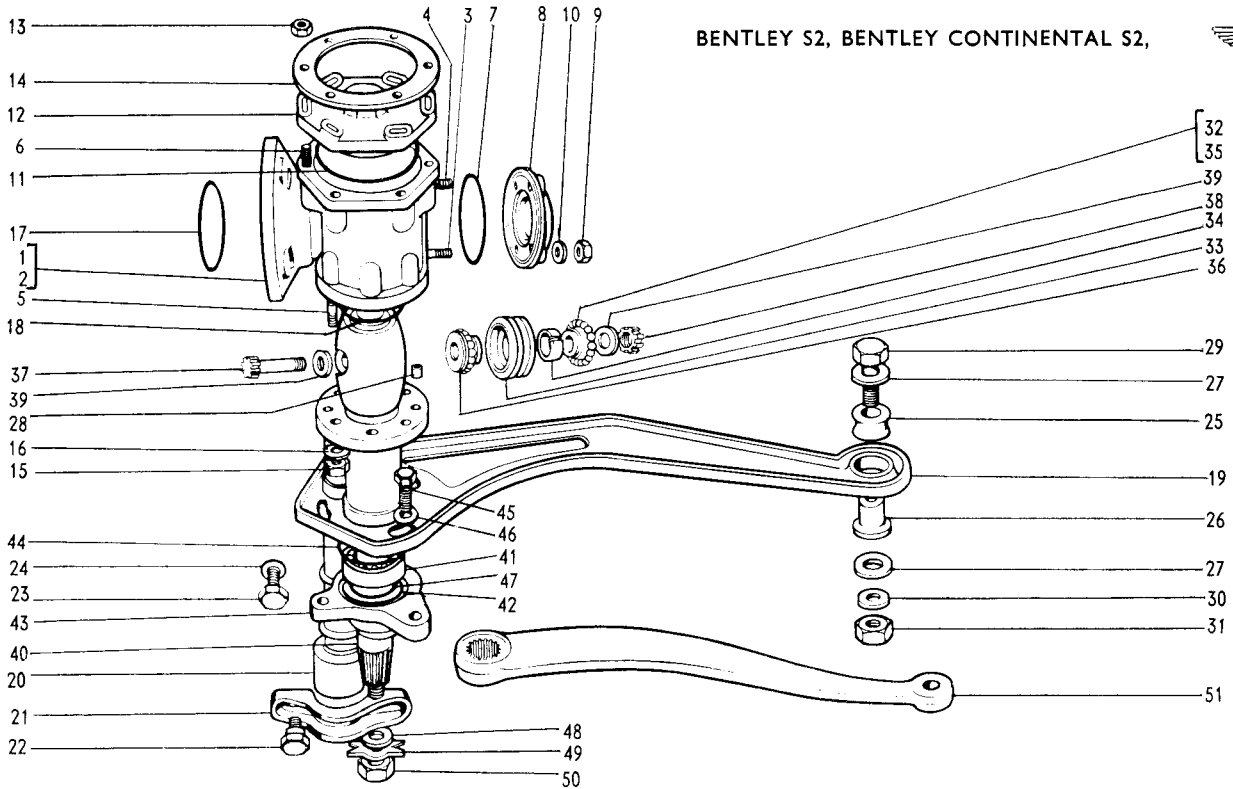
- | | | |
|-------|----|----------------------------------------------------|
| Group | 1. | Steering Box and Mounting (<i>R.H. Cars</i>). |
| | „ | 2. Steering Box and Mounting (<i>L.H. Cars</i>). |
| | „ | 3. Steering Wheel and Horn Button. |
| | „ | 4. Steering Column. |
| | „ | 5. Transfer Gear and Valve. |
| | „ | 6. Drag Link and Track Rods (<i>R.H. Cars</i>). |
| | „ | 7. Drag Link and Track Rods (<i>L.H. Cars</i>). |
| | „ | 8. Power Pump. |
| | „ | 9. Power Cylinder and Hoses. |
| | „ | 10. Gear Control Mechanism (<i>R.H. Cars</i>). |
| | „ | 11. Gear Control Mechanism (<i>L.H. Cars</i>). |

PARTS LIST

ROLLS-ROYCE SILVER CLOUD II,



BENTLEY S2, BENTLEY CONTINENTAL S2,



Ref.	Part No.	Description	No off	Remarks	Ref.	Part No.	Description	No off	Remarks
1	UR.4257	ASSEMBLY-Steering Box-R.H.	1		29	UA.2656/Z	BOLT-Fitting-Front Mounting	1	
2	UR.4168	†BOX-Steering-R.H.	1		30	UA.1253/Z	WASHER-Plain-Bolt-Front Mounting	2	
3	UA.904/Z	STUD-End Cover	3		31	RE.22428	NUT-Bolt-Front Mounting	1	
4	UA.905/Z	STUD-End Cover and Clip	1		32	UR.5052	ASSEMBLY-Steering Cam Roller	1	
5	UA.954/Z	STUD-Mounting Bracket	6		33	UR.5051	ROLLER-Steering Cam	1	
6	UA.853/Z	STUD-Top Cover	6		34	RF.7487	RING-Retaining-Ball Bearing	1	
7	UR.1697	RING-Sealing-End Cover-Steering Box	1		35	RG.6594	BALL-Cam Roller	28	
8	UR.4183	COVER-End-Steering Box	1		36	RF.7488	BEARING-Ball-Cam Roller	2	
9	UA.302/Z	NUT-Stud-End Cover	4		37	UR.719	BOLT-Shaft to Roller	1	
10	UA.1252/Z	WASHER-Plain-Stud-End Cover	4		38	UR.716	NUT-Bolt-Shaft to Roller	1	
11	UR.4210	RING-Sealing-Top Cover-Steering Box	1		39	UR.3330/5	WASHER-Packing-Roller-(.022" to .027" respectively)	2	To suit
12	UR.4216	COVER-Top-Steering Box	1		40	UR.2979	SHAFT-Rocking	1	
13	UA.301/Z	NUT-Stud-Top Cover	6		41	RF.9059	BEARING-Rocking Shaft	2	
14	UR.4199	WASHER-Top Cover	1		42	UR.706	WASHER-Adjusting-Bearing	1	
15	RE.22428	NUT-Stud-Mounting Bracket	6		43	UR.4632	HOUSING-Bearing-Rocking Shaft	1	
16	UA.1253/Z	WASHER-Plain-Stud-Mounting Bracket	6		44	UR.4703	RING-Sealing-Bearing Housing	1	
17	UR.1697	RING-Sealing-Steering Box	1		45	UA.206/Z	SETSCREW-Bearing Housing	3	
18	UR.4209	RING-Sealing-Steering Box	1		46	UA.6104/Z	WASHER-Setscrew-Bearing Housing	3	
19	UR.4200	ASSEMBLY-Mounting Arm-Steering Box-R.H.	1		47	UR.3344	SEAL-Oil-Rocking Shaft	1	
20	UR.4251	BUSH-Mounting Tube-Steering Box	2		48	K.4431/Z	WASHER-Rocking Shaft	1	
21	UR.4204	CLAMP-Mounting Tube-Steering Box	2		49	G.56472	WASHER-Lock-Rocking Shaft	1	
22	UR.4631	SETSCREW-Mounting Tube to Frame	2		50	UA.357/Z	NUT-Rocking Shaft	1	
23	UA.153/Z	SETSCREW-Mounting Tube to Frame	2		51	UR.4268	LEVER-Pendulum	1	
24	UA.1252/Z	WASHER-Plain-Setscrew-Mounting Tube to Frame	4						
25	UR.4208	BUSH-Front Mounting-Mounting Arm	1						
26	UR.4206	PIECE-Distance-Mounting Arm	1						
27	UR.4207	WASHER-Mounting Arm	2						
28	UR.229	DOWEL-Mounting Flange	2						

Items marked † are not supplied as individual parts

Silver Cloud II —From SRA1 Bentley S2 —From B1AA
 —From SPA2 —From B2AM
 Silver Cloud II LWB—From LCA1 Bentley S2 LWB—From LBA1
 Bentley Continental S2—From BCIAR

STEERING—

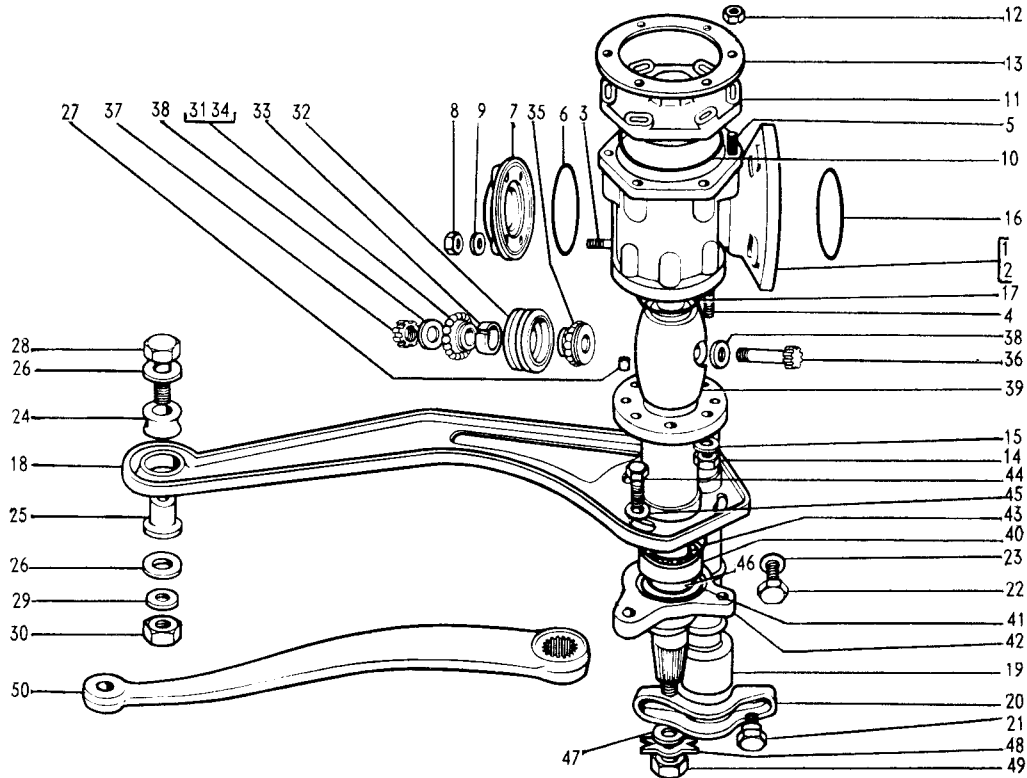
STEERING BOX AND MOUNTING—RH CARS

PARTS LIST

ROLLS-ROYCE SILVER CLOUD II,



BENTLEY S2, BENTLEY CONTINENTAL S2,



Ref.	Part No.	Description	No. off	Remarks	Ref.	Part No.	Description	No. off	Remarks
1	UR.4511	ASSEMBLY—Steering Box—L.H.	1		36	UR.719	BOLT—Shaft to Roller	1	
2	UR.4169	†BOX—Steering—L.H.	1		37	UR.716	NUT—Bolt—Shaft to Roller	1	
3	UA.904/Z	STUD—End Cover	4		38	UR.3330/5	WASHER—Packing—Roller—(.022" to .027" respectively)	2	To suit.
4	UA.954/Z	STUD—Mounting Bracket	6		39	UR.2980	SHAFT—Rocking	1	
5	UA.853/Z	STUD—Top Cover	6		40	RF.9059	BEARING—Rocking Shaft	2	
6	UR.1697	RING—Sealing—Steering Box—End Cover	1		41	UR.706	WASHER—Adjusting—Bearing	1	
7	UR.4183	COVER—End—Steering Box	1		42	UR.4633	HOUSING—Bearing—Rocking Shaft	1	
8	UA.302/Z	NUT—Stud—End Cover	4		43	UR.4703	RING—Sealing—Bearing Housing	1	
9	UA.1252/Z	WASHER—Plain—Stud—End Cover	4		44	UA.206/Z	BOLT—Bearing Housing	3	
10	UR.4210	RING—Sealing—Top Cover—Steering Box	1		45	UA.6104/Z	WASHER—Bolt—Bearing Housing	3	
11	UR.4215	COVER—Top—Steering Box	1		46	UR.3344	SEAL—Oil—Rocking Shaft	1	
12	UA.301/Z	NUT—Stud—Top Cover	6		47	K.4431/Z	WASHER—Rocking Shaft	1	
13	UR.4199	WASHER—Top Cover	1		48	G.56472	WASHER—Lock—Rocking Shaft	1	
14	RE.22428	NUT—Stud—Mounting Bracket	6		49	UA.357/Z	NUT—Rocking Shaft	1	
15	UA.1253/Z	WASHER—Plain—Stud—Mounting Bracket	6		50	UR.4269	LEVER—Pendulum	1	
16	UR.1697	RING—Sealing—Steering Box	1						
17	UR.4209	RING—Sealing—Steering Box	1						
18	UR.4201	ASSEMBLY—Mounting Arm—Steering Box—L.H.	1						
19	UR.4251	BUSH—Mounting Tube—Steering Box	2						
20	UR.4204	CLAMP—Mounting Tube—Steering Box	2						
21	UR.4631	SETSCREW—Mounting Tube to Frame	2						
22	UA.151/Z	SETSCREW—Mounting Tube to Frame	2						
23	UA.1252/Z	WASHER—Setscrew—Mounting Tube to Frame	4						
24	UR.4208	BUSH—Front Mounting—Mounting Arm	1						
25	UR.4206	PIECE—Distance—Mounting Arm	1						
26	UR.4207	WASHER—Mounting Arm	2						
27	UR.229	DOWEL—Mounting Flange	2						
28	UA.2656/Z	BOLT—Fitting—Front Mounting	1						
29	UA.1253/Z	WASHER—Bolt—Front Mounting	2						
30	RE.22428	NUT—Bolt—Front Mounting	1						
31	UR.5052	ASSEMBLY—Steering Cam Roller	1						
32	UR.5051	ROLLER—Steering Cam	1						
33	RF.7487	RING—Retaining—Ball Bearing	1						
34	RG.6594	BALL—Cam Roller	28						
35	RF.7488	BEARING—Ball—Cam Roller	2						

Items marked † are not supplied as individual parts

Silver Cloud II —From SRA1 Bentley S2 —From B1AA
 —From SPA2 —From B2AM
 Silver Cloud II LWB—From LCA1 Bentley S2 LWB—From LBA1
 Bentley Continental S2—From BCIAR

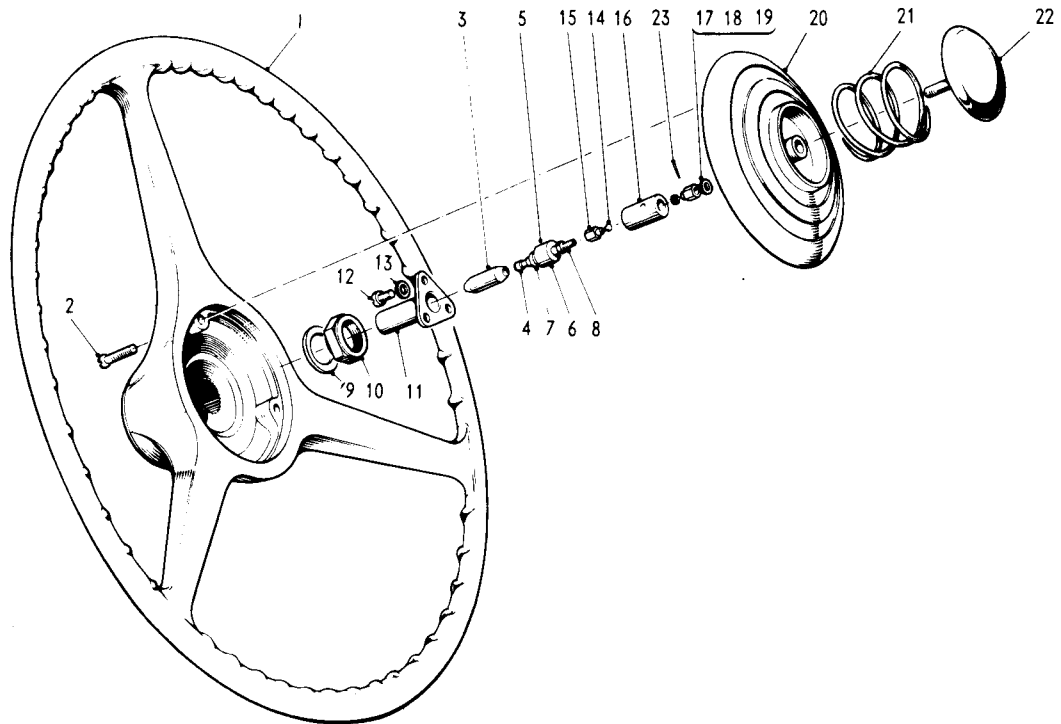
STEERING—

STEERING BOX AND MOUNTING—L.H. CARS

PARTS LIST

ROLLS-ROYCE SILVER CLOUD II,

BENTLEY S2, BENTLEY CONTINENTAL S2,



Ref.	Part No.	Description	No. off	Remarks	Ref.	Part No.	Description	No. off	Remarks
1	UR.4687	ASSEMBLY—Steering Wheel—(17")	1						
2	K.2830/Z	SCREW—Horn Button Housing to Steering Wheel	3						
3	RD.7050	CONNECTOR—Snap	1						
4	UD.2141	NIPPLE—Snap Connector	1						
5	UR.2691	CABLE—Snap Connector to Horn Contact	1						
6	UR.2371	BUSH—Horn Cable	1						
7	RD.6164	WASHER—Gland	1						
8	F.58688	SCREW—Switch Terminal—Horn	1						
9	KB.7115/R	WASHER—Steering Wheel Nut	1						
10	UR.1094	NUT—Steering Wheel	1						
11	UR.4667	HOUSING—Contact—Horn Button	1						
12	K.1807/Z	SCREW—Contact Housing to Button Housing	3						
13	K.4446/Z	WASHER—Plain—Screw—Contact Housing to Button Housing	3						
14	F.83987	POINT—Contact—Switch	2						
15	F.58687	NUT—Contact Point	2						
16	RF.3424	INSULATOR—Switch Terminal	1						
17	FB.532	WASHER—Adjusting—Horn Switch—(·020")	1	To suit					
18	FB.533	WASHER—Adjusting—Horn Switch—(·032")							
19	FB.534	WASHER—Adjusting—Horn Switch—(·040")							
20	UR.1906	HOUSING—Horn Button	1						
21	RF.4435	SPRING—Horn Button	1						
22	RF.10306	ASSEMBLY—Horn Button	1						
23	K.4870/R	PIN—Taper—Push Rod	1						

Items marked † are not supplied as individual parts

Silver Cloud II —From SPA1 Bentley S2 —From B1AA
 —From SRA2 —From B2AM
 Silver Cloud II LWB—From LCA1 Bentley S2 LWB—From LBA1
 Bentley Continental S2—From BCIAR

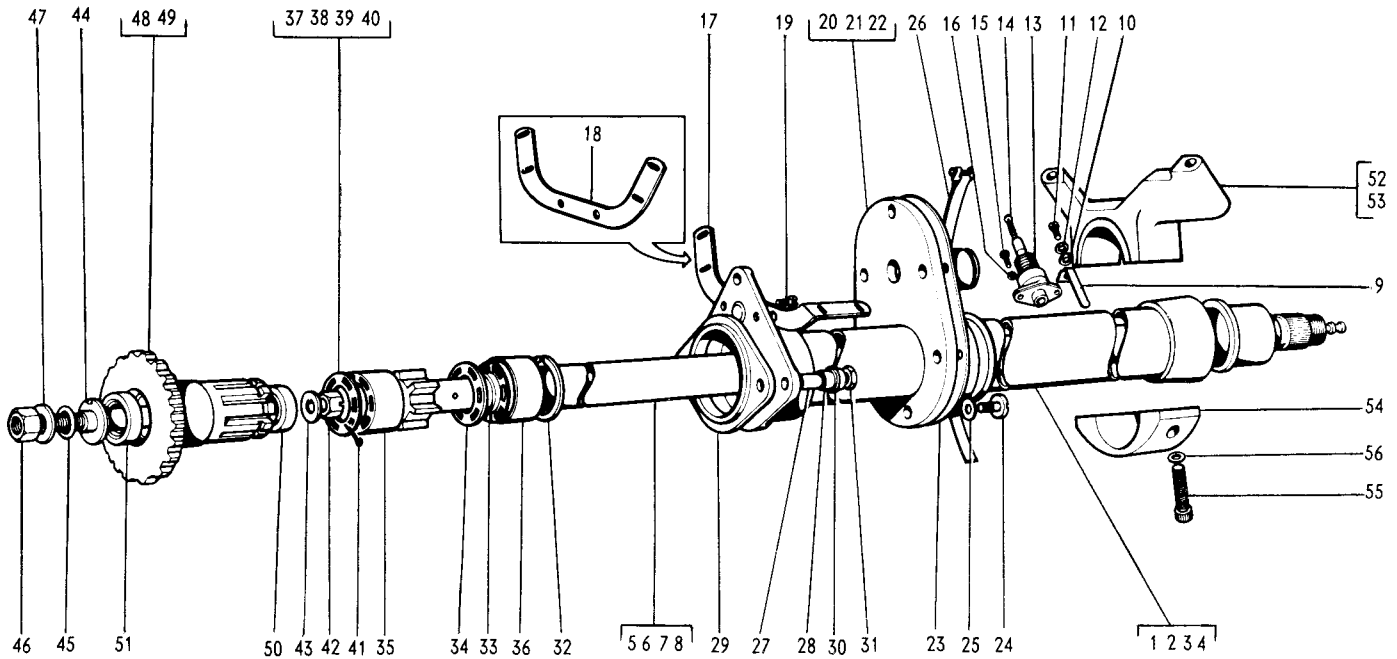
STEERING

STEERING WHEEL AND HORN BUTTON

PARTS LIST

ROLLS-ROYCE SILVER CLOUD II,

BENTLEY S2, BENTLEY CONTINENTAL S2,



Ref.	Part No.	Description	No. off	Remarks	Ref.	Part No.	Description	No. off	Remarks
1	UR.4710	ASSEMBLY-Outer Steering Tube	1	Standard Length	31	K.4006/Z	NUT-Stud-Mounting-Outer Steering Tube	2	
2	UR.5078	ASSEMBLY-Outer Steering Tube	1	1" Longer than Standard	32	UR.3114	RING-Snap-Gear Coupling	1	
3	UR.5098	ASSEMBLY-Outer Steering Tube	1	2" Longer than Standard	33	UR.3122	WASHER-Split-Coupling-Inner Steering Tube	1	
4	UR.5088	ASSEMBLY-Outer Steering Tube	1	1" Shorter than Standard	34	UR.3120	PIECE-Distance-Coupling-Inner Steering Tube	1	
5	UR.4711	ASSEMBLY-Inner Steering Tube	1	Standard Length	35	UR.3121	COUPLING-Inner Steering Tube	1	
6	UR.5080	ASSEMBLY-Inner Steering Tube	1	1" Longer than Standard	36	UR.3115	COVER-Coupling-Inner Steering Tube	1	
7	UR.5100	ASSEMBLY-Inner Steering Tube	1	2" Longer than Standard	37	UR.3116	WASHER-Distance-Coupling-Inner Steering Tube-(.080")	2	As required
8	UR.5090	ASSEMBLY-Inner Steering Tube	1	1" Shorter than Standard	38	UR.3117	WASHER-Distance-Coupling-Inner Steering Tube-(.064")	2	
9	UR.3421	SPRING-Contact-Earth-Horn Push	1		39	UR.3118	WASHER-Distance-Coupling-Inner Steering Tube-(.048")	2	
10	UD.1528	WASHER-Cup-Contact Spring	1		40	UR.3119	WASHER-Distance-Coupling-Inner Steering Tube-(.036")	2	
11	K.1704/Z	SCREW-Contact Spring	1		41	E.84689	PIN-Split-Eccentric Pin	1	
12	K.9003/Z	WASHER-Screw-Contact Spring	1		42	RE.22432	NUT-Eccentric Pin	1	
13	UR.1791	ASSEMBLY-Housing and Brush-Slip Ring-Horn Contact	1		43	UR.3125	WASHER-Eccentric Pin	1	
14	UR.1790	ASSEMBLY-Brush-Slip Ring-Horn Contact	1		44	UR.3124	PIN-Eccentric	1	
15	K.1750/Z	SCREW-Brush Housing	2		45	UE.2514	RING-Sealing-Eccentric Pin	1	
16	K.4401/Z	WASHER-Plain-Brush Housing	2		46	UA.305/Z	NUT-Eccentric Pin	1	
17	UR.5020	BRACKET-Mounting-Micro Switch	1	L.H. Cars	47	UA.1255/Z	WASHER-Plain-Nut-Eccentric Pin	1	
18	UR.4107	BRACKET-Mounting-Micro Switch	1	R.H. Cars	48	UR.4177	GEAR-Driving-Inner Steering Tube-L.H.	1	L.H. Cars
19	K.1904/Z	SCREW-Mounting Bracket	2		49	UR.4178	GEAR-Driving-Inner Steering Tube-R.H.	1	R.H. Cars
20	UR.4262	SEAL-Steering Column and Control	1	Not fitted to Bentley Cont. S2	50	UR.1134	BEARING-Driving Gear-Inner Steering Tube	1	
21	UR.4944	SEAL-Steering Column and Control	1	Fitted to L.H. Bentley Cont. S2	51	UR.3136	BEARING-Driving Gear-Inner Steering Tube	1	
22	UR.4943	SEAL-Steering Column and Control	1	Fitted to R.H. Bentley Cont. S2	52	UB.2616	BRACKET-Column Support-R.H.	1	R.H. Cars
23	UR.4275	RING-Seal-Retaining	1		53	UB.2615	BRACKET-Column Support-L.H.	1	L.H. Cars
24	CS.30542/Z	SCREW-Seal-Steering Column and Control	6		54	UB.1475	CAP-Clamp-Support	1	
25	K.4404/Z	WASHER-Plain-Screw-Seal-Steering Column and Control	6		55	UB.1478	SCREW-Socket Cap	2	
26	UR.5168	Clip-Toe Board Seal-Steering Column	1		56	UB.1477	WASHER-Screw-Socket Cap	2	
27	UR.3152	Piece-Distance-Mounting-Outer Steering Tube	2						
28	UR.3109	BUSH-Mounting-Outer Steering Tube	2						
29	UR.4108	SLEEVE-Mounting-Outer Steering Tube	1						
30	UR.1692	WASHER-Stud-Mounting-Outer Steering Tube	2						

Items marked † are not supplied as individual parts

Silver Cloud II —From SRA1 Bentley S2 —From B1AA
 —From SPA2 —From B2AM
 Silver Cloud II LWB—From LCA1 Bentley S2 LWB—From LBA1
 Bentley Continental S2—From BCIAR

STEERING—

STEERING COLUMN—

PARTS LIST

ROLLS-ROYCE SILVER CLOUD II,



BENTLEY S2, BENTLEY CONTINENTAL S2,

Ref.	Part No.	Description	No. off	Remarks	Ref.	Part No.	Description	No. off	Remarks	
1	UR.4261	ASSEMBLY-Top Cover-Gear Casing	1		67	UR.3515/28	WASHER-Adjusting-(.060" to .086" thick respectively)		} 4 off As required.	
2	UR.4112	† COVER-Top-Gear Casing	1		68	UR.3269	WASHER-Adjusting-(.095" thick)			
3	KB.255/Z	STUD-Top Cover	2		69	UR.4181	DISC-Retaining-Bearing	1		
4	UR.1697	RING-Sealing-Top Cover	1		70	UR.1675	PLUG-Steering Cam Tube	1		
5	UR.4188	BOLT-Driven Gear	1		71	KB.6204/R	RING-Sealing-Plug	1		
6	UR.1703	WASHER-Bolt	1		72	KB.14023/R	CIRCLIP-Inner	1		
7	UR.4176	GEAR-Driven-Steering Cam Tube	1	RH Cars.	73	UR.1683	RACE-Outer	2		
8	UR.4175	GEAR-Driven-Steering Cam Tube	1	LH Cars.	74	RF.6757	ROLLERS-Needle	116	} Alternative	
9	UR.4258	ASSEMBLY-Steering Cam Tube	1		75	RF.7364	ROLLERS-Needle	116		
10	UR.1832	† CAM-Steering	1							
11	UR.4187	† TUBE-Steering Cam	1							
12	KB.14179/R	CIRCLIP-Outer	1							
13	UR.3515/28	WASHER-Adjusting-(.060" to .086" thick respectively)	1	} 1 off to Suit.						
14	UR.3269	WASHER-Adjusting-(.095" thick)	1							
15	UR.4510	ASSEMBLY-Steering Cam Tube	1							
16	UR.1669	† CAM-Steering	1							
17	UR.4187	† TUBE-Steering Cam	1							
18	KB.14179/R	CIRCLIP-Outer	1							
19	UR.3515/28	WASHER-Adjusting-(.060" to .086" thick respectively)	1	} 1 off to Suit.						
20	UR.3269	WASHER-Adjusting-(.095" thick)	1							
21	UR.4179	ASSEMBLY-Bearing Housing	1							
22	UR.4182	RING-Sealing-Gear Case to Adaptor	1							
23	UR.4263	ASSEMBLY-Adaptor Valve Housing	1							
24	UR.4173	ADAPTOR	1							
25	UR.4186	SEAL-Oil-Adaptor	1							
26	UR.1697	RING-Sealing-Adaptor Valve Housing	1							
27	UA.2754/Z	NUT-Steering Cam Tube	1							
28	KB.7407/R	WASHER-Tab-Steering Cam Tube	1							
29	UR.1693	WASHER-Key-Steering Cam Tube	1							
30	UR.4336	RING-Sealing-3rd Bearing Housing	1							
31	UR.270	PLUG-Gear Casing	2							
32	KB.1079/R	WASHER-Plug	2							
33	UR.4508	ASSEMBLY-Transfer Gear Casing-LH	1							
34	UR.4171	† CASING-Gear	1	} LH Cars.						
35	UA.903/Z	STUD-Top Cover	4							
36	KB.252/Z	STUD-Bearing Housing	4							
37	UR.4259	ASSEMBLY-Transfer Gear Casing-RH	1	} RH Cars.						
38	UR.4170	† CASING-Gear	1							
39	UA.903/Z	STUD-Top Cover	4							
40	KB.252/Z	STUD-Bearing Housing	4							
41	UA.1252/Z	WASHER-Plain-Stud-Top Cover	4							
42	UA.302/Z	NUT-Stud-Top Cover	4							
43	K.4404/Z	WASHER-Plain-Stud-Bearing Housing	4							
44	K.4006/Z	NUT-Stud-Bearing Housing	4							
45	UR.4260	ASSEMBLY-Valve Housing	1							
46	UR.4172	† HOUSING-Valve	1							
47	UA.754/Z	STUD-Valve Housing	4							
48	UA.1252/Z	WASHER-Plain-Stud-Valve Housing	4							
49	UA.302/Z	NUT-Stud-Valve Housing	4							
50	UA.171/Z	SETSCREW-Valve Housing	4							
51	UA.1252/Z	WASHER-Plain-Setscrew	4							
52	UR.1707	ASSEMBLY-Relief Valve	1							
53	UR.1706	† VALVE-Relief	1							
54	RF.8789	† BALL-Relief Valve	1							
55	UR.1700	PLUNGER-Lower-Primary Spring	4							
56	UR.2992	SPRING-Primary Valve Control	4							
57	UR.1699	PLUNGER-Upper-Primary Spring	4							
58	UR.1673	VALVE	1							
59	UR.1710	WASHER-Spherical-Valve	2							
60	UR.1686	SPRING-Secondary	24							
61	UR.1691	PIN-Spacing-Thrust Washer	4							
62	UR.5457/60	WASHER-Thrust-Spring-(.192" to .198" thick respectively)	1	} 2 off As required.						
63	UR.3542/47	WASHER-Thrust-Spring-(.200" to .210" thick respectively)	1							
64	UR.1681	HOUSING-Bearing and Spring	2	} Alternative						
65	UR.5481	BEARING-Steering Cam Tube	2							
66	UR.3361	BEARING-Steering Cam Tube	2							

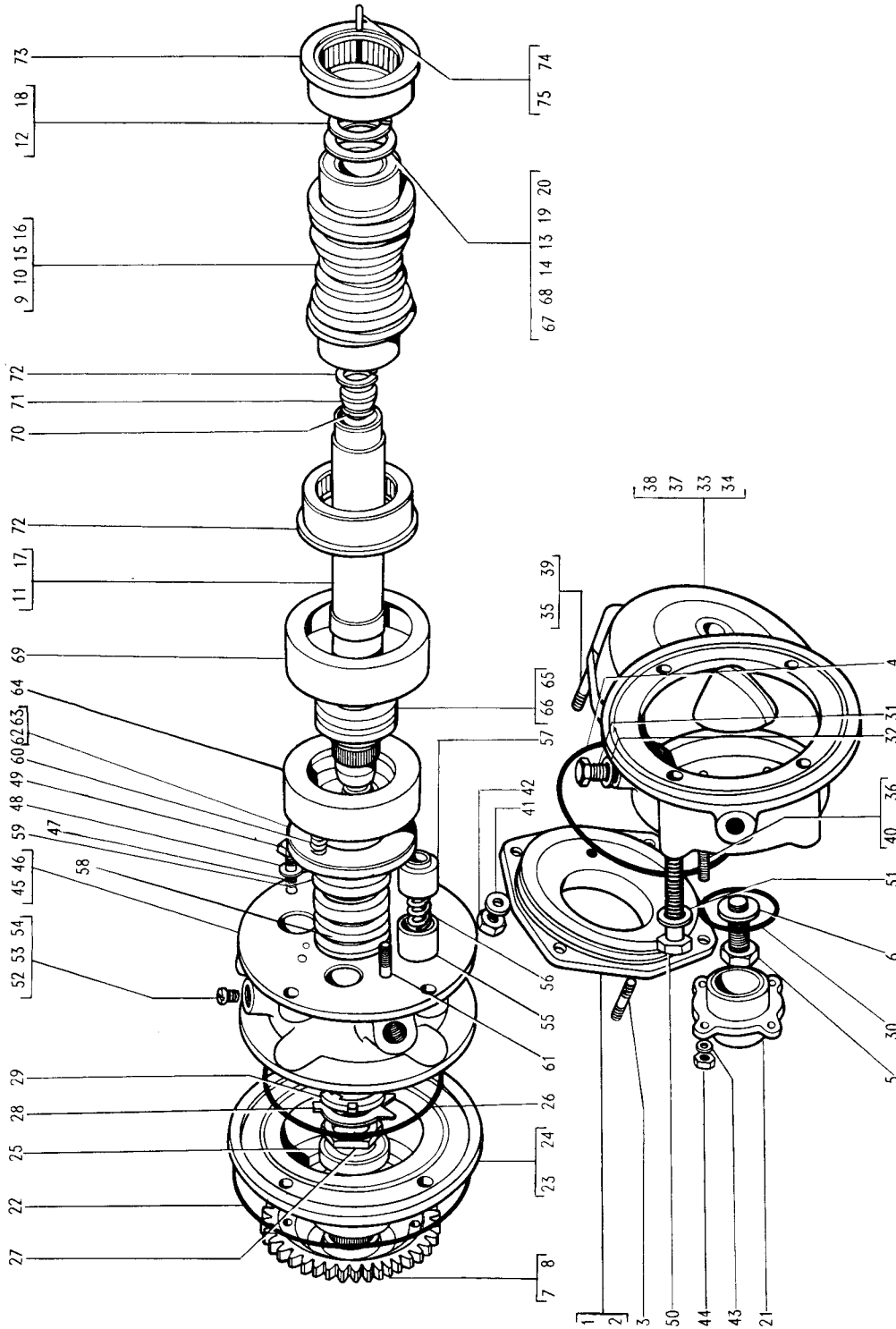
Silver Cloud II —From SRA1 Bentley S2 —From B1AA
 —From SPA2 —From B2AM
 Silver Cloud II LWB—From LCA1 Bentley S2 LWB—From LBA1
 Bentley Continental S2—From BCIAR

Items marked † are not supplied as individual parts

STEERING—
 TRANSFER GEAR AND VALVE

PARTS LIST

ROLLS-ROYCE SILVER CLOUD II,
BENTLEY S2, BENTLEY CONTINENTAL S2,



STEERING—

TRANSFER GEAR AND VALVE

PARTS LIST

ROLLS-ROYCE SILVER CLOUD II,



BENTLEY S2, BENTLEY CONTINENTAL S2,

Ref.	Part No.	Description	No. off	Remarks	Ref.	Part No.	Description	No. off	Remarks
1	UR.4884	ASSEMBLY-Socket-R.H. Steering Tube	1		78	UR.1309/13	WASHER-Adjusting-Idler Lever (.105" to .165" thick respectively)	1	To suit.
2	UR.4880	SOCKET-Outer-R.H.	1		79	FB.3940	RING-Sealing-Idle Lever	2	
3	UR.4437	SEAT-Ball Pin-Tube	1		80	UR.2354	WASHER-Adjusting-Idler Lever (.030" thick)	2	As required.
4	UR.4883	ASSEMBLY-Socket-L.H. Steering Tube	1		81	UR.2355	WASHER-Adjusting-Idler Lever (.035" thick)	2	
5	UR.4879	SOCKET-Outer-L.H.	1		82	UR.2356	WASHER-Adjusting-Idler Lever (.036" thick)	2	
6	UR.4437	SEAT-Ball Pin-Tube	1		83	UR.2357	WASHER-Adjusting-Idler Lever (.037" thick)	2	
7	UR.4883	ASSEMBLY-Socket-R.H. Drag Link	1		84	UR.2358	WASHER-Adjusting-Idler Lever (.038" thick)	2	
8	UR.4879	SOCKET-Outer-R.H.	1		85	UR.2359	WASHER-Adjusting-Idler Lever (.039" thick)	2	
9	UR.4437	SEAT-Ball Pin-Tube	1		86	UR.2360	WASHER-Adjusting-Idler Lever (.044" thick)	2	
10	UR.4884	ASSEMBLY-Socket-L.H. Drag Link	1		87	UR.2361	WASHER-Adjusting-Idler Lever (.049" thick)	2	
11	UR.4880	SOCKET-Outer-L.H. Drag Link	1		88	UR.3384	PIECE-Distance-Idler Lever	1	
12	UR.4437	SEAT-Ball Pin-Tube	1		89	UR.1119	WASHER-Oil Seal-Idler Lever	1	
13	UR.4878	TUBE-Sponge Drag Link	1		90	UA.1254/Z	WASHER-Plain-Pin-Idler Lever	1	
14	RE.7881	NIPPLE-Grease-Sockets	4		91	UA.304/Z	NUT-Pin-Idler Lever	1	
15	UR.4064	PLUG	4		92	RE.7881	NIPPLE-Grease-Idler Lever	1	
16	KB.1095/R	WASHER-Plug	4		93	UR.4881	LEVER-Centre Steering	1	
17	RF.7552	SPRING-Ball Joint-Steering Tube	4		94	UR.3411	PIN-Centre Steering Lever	1	
18	RF.7556	SEAT-Spring	4		95	UR.3385	WASHER-Distance-Centre Steering Lever	1	
19	RF.8789	BALL-Ball Joint	4		96	UR.1111	RETAINER-Seal-Centre Steering Lever	2	
20	UR.4452	CLIP-Retaining-Seal-Grease	4		97	UR.1112	RING-Sealing-Centre Steering Lever	2	
21	UR.4442	SPRING-Seal-Grease	4		98	UR.1134	BEARING-Taper Roller-Centre Steering Lever	2	
22	UR.4505	SEAL-Ball Pin-Steering Tube	4		99	UR.1113	PIECE-Distance-Bearing Housing-Centre Steering Lever	1	
23	UR.4443	SEAT-Seal-Grease	4		100	UR.1114	WASHER-Adjusting-Bearing Housing-Centre Steering Lever	1	
24	UR.4082	PIN-Ball-Steering Tube	4		101	UR.3206	WASHER-Adjusting-Centre Steering Lever-(.100" thick)	1	
25	UR.2710	NUT-Castellated-Ball Pin	4		102	UR.3207	WASHER-Adjusting-Centre Steering Lever-(.125" thick)	1	
26	K.4603/Z	PIN-Split-Ball Pin	4		103	UR.3208	WASHER-Adjusting-Centre Steering Lever (.159" thick)	1	
27	UR.3931	BOLT-Socket Clamping	4		104	UR.3209	WASHER-Adjusting-Centre Steering Lever (.175" thick)	1	
28	UA.1102/Z	NUT-Bolt-Socket Clamping	4		105	UR.1115	WASHER-Adjusting-Centre Steering Lever-(.187" thick)	1	
29	K.4603/Z	PIN-Split-Socket Clamping	4		106	UR.1441	WASHER-Adjusting-Centre Steering Lever-(.250" thick)	1	
30	UR.4454	ASSEMBLY-Cross Steering Tube-R.H.	1		107	UA.1254/Z	WASHER-Plain-Pin-Centre Steering Lever	1	
31	UR.3726	†TUBE-Cross Steering-R.H.	1		108	UA.304/Z	NUT-Pin-Centre Steering Lever	1	
32	UR.4440	†SOCKET-Inner	1		109	RF.6757	BEARING-Needle Roller-Centre Steering Lever	20	
33	UR.4437	SEAT-Ball Pin	1		110	RF.7364	BEARING-Needle Roller-Centre Steering Lever	20	
34	K.4810/R	†PIN-Taper	2		111	UR.3248	ROLLER RACE-Centre Steering Lever	1	
35	UR.4453	ASSEMBLY-Cross Steering Tube-L.H.	1		112	RE.7881	NIPPLE-Grease-Centre Steering Lever	2	
36	UR.3726	†TUBE-Cross Steering-L.H.	1						
37	UR.4441	†SOCKET-Inner	1						
38	UR.4437	SEAT-Ball Pin	1						
39	K.4810/R	†PIN-Taper	2						
40	RE.7881	NIPPLE-Grease-Sockets	2						
41	UR.4064	PLUG-Ball Joints	2						
42	KB.1095/R	WASHER-Plug-Ball Joints	2						
43	RF.7552	SPRING-Ball Joint	2						
44	RF.7556	SEAT-Spring-Ball Joint	2						
45	RF.8789	BALL-Ball Joint	2						
46	UR.4452	CLIP-Retaining-Seal-Grease	2						
47	UR.4442	SPRING-Seal-Grease	2						
48	UR.4505	SEAL-Grease-Ball Pin-Outer	2	Alternatives					
49	UR.4506	SEAL-Grease-Ball Pin-Outer	2						
50	UR.4507	SEAL-Grease-Ball Pin-Outer	2	Alternatives.					
51	UR.4443	SEAT-Seal-Grease	2						
52	UR.4082	PIN-Ball-Cross Steering Lever	2	Alternatives.					
53	UR.4083	PIN-Ball-Cross Steering Lever	2						
54	UR.4084	PIN-Ball-Cross Steering Lever	2						
55	UR.2710	NUT-Castellated-Ball Pin	2						
56	K.4603/Z	PIN-Split-Ball Pin	2						
57	UR.4471	ASSEMBLY-Cross Beam-Centre Steering	1						
58	UR.4067	CROSSBEAM-Centre Steering	1						
59	UR.4468	SEAT-Ball Pin-Cross Beam	2						
60	RE.7881	NIPPLE-Grease-Cross Beam	2						
61	UR.4064	PLUG-Ball Joints-Cross Beam	2						
62	KB.1095/R	WASHER-Plug-Ball Joints-Cross Beams	2						
63	RF.7552	SPRING-Ball Joint-Cross Beam	2						
64	RF.7556	SEAT-Spring-Ball Joint-Cross Beam	2						
65	RF.8789	BALL-Ball Joint-Cross Beam	2						
66	UR.3420	SPRING-Oil Seal-Cross Beam	2						
67	UR.3427	SEAL-Oil-Ball Joint-Cross Beam	2						
68	UR.4068	WASHER-Protecting-Cross Beam Seals	4						
69	UR.4082	PIN-Ball-Cross Beam	2						
70	UR.4083	PIN-Ball-Cross Beam	2						
71	UR.4084	PIN-Ball-Cross Beam	2						
72	UR.2710	NUT-Castellated-Ball Pin	2						
73	K.4603/Z	PIN-Split-Ball Pin	2						
74	UR.3870	ASSEMBLY-Idler Lever	1						
75	UR.3406	†LEVER-Idler	1						
76	UR.1041	†BUSH-Idler Lever	2						
77	UR.3411	PIN-Idler Lever	1						

Items marked † are not supplied as individual parts

Silver Cloud II —From SRA1 Bentley S2 —From B1AA
 —From SPA2 —From B2AM
 Silver Cloud II LWB—From LCA1 Bentley S2 LWB—From LBA1
 Bentley Continental S2—From BC1AR

STEERING—

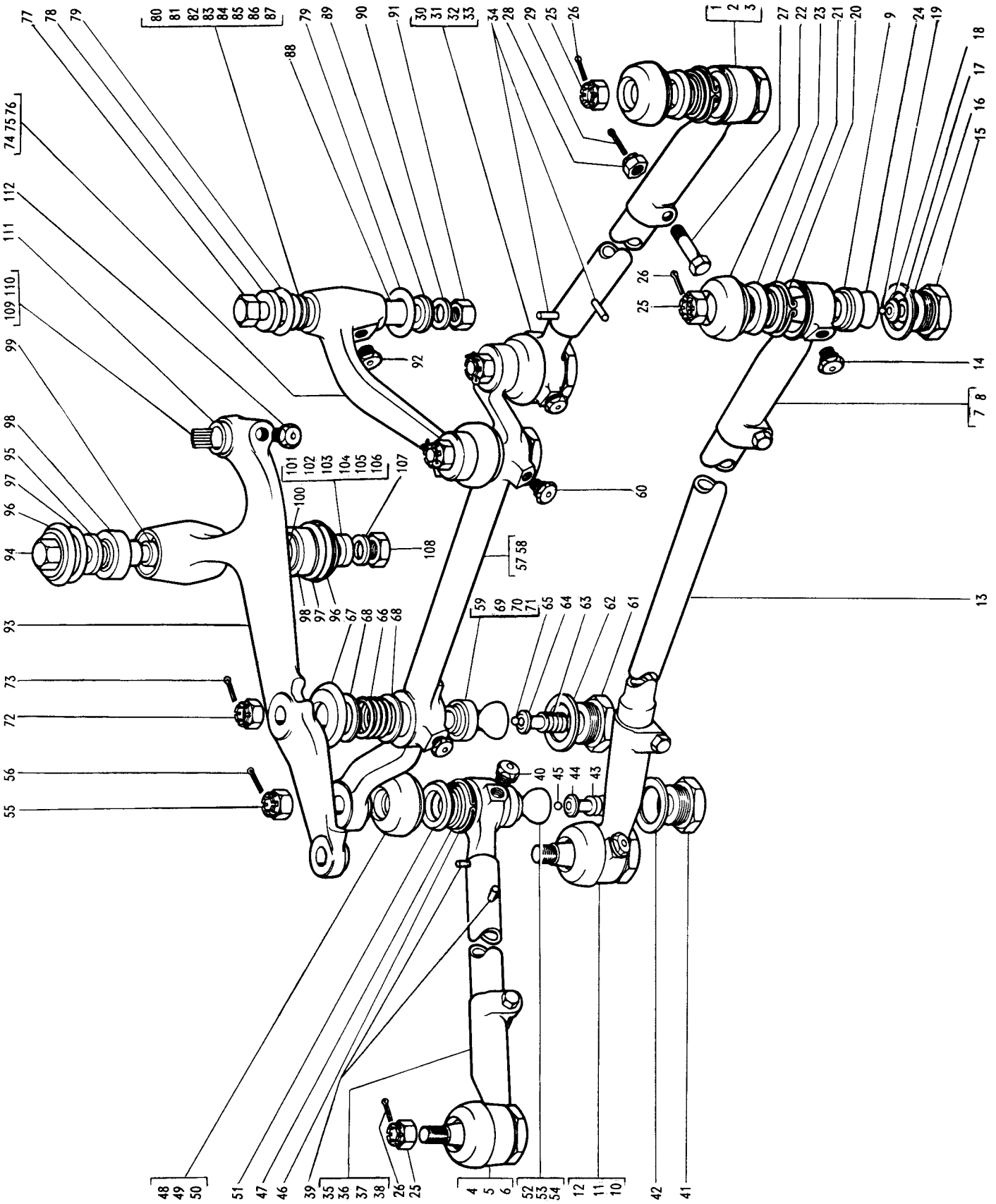
DRAG LINK AND TRACK RODS—R.H. CARS

PARTS LIST

ROLLS-ROYCE SILVER CLOUD II,



BENTLEY S2, BENTLEY CONTINENTAL S2,



STEERING—

DRAG LINK AND TRACK RODS—R.H. CARS

PARTS LIST

ROLLS-ROYCE SILVER CLOUD II,



BENTLEY S2, BENTLEY CONTINENTAL S2,

Ref.	Part No.	Description	No. off	Remarks	Ref.	Part No.	Description	No. off	Remarks
1	UR.4883	ASSEMBLY—Socket—L.H. Steering Tube	1		78	UR.1309/13	WASHER—Adjusting—Idler Lever (.105" to .165" Thick respectively)	1	To suit.
2	UR.4879	SOCKET—Outer—L.H.	1		79	FB.3940	RING—Sealing—Idler Lever	2	
3	UR.4437	SEAT—Ball Pin—Tube	1		80	UR.2354	WASHER—Adjusting—Idler Lever (.030" Thick)	2	As required.
4	UR.4884	ASSEMBLY—Socket—R.H. Steering Tube	1		81	UR.2355	WASHER—Adjusting—Idler Lever (.035" Thick)	2	
5	UR.4880	SOCKET—Outer—R.H.	1		82	UR.2356	WASHER—Adjusting—Idler Lever (.036" Thick)	2	
6	UR.4437	SEAT—Ball Pin—Tube	1		83	UR.2357	WASHER—Adjusting—Idler Lever (.037" Thick)	2	
7	UR.4884	ASSEMBLY—Socket—L.H. Drag Link	1		84	UR.2358	WASHER—Adjusting—Idler Lever (.038" Thick)	2	
8	UR.4880	SOCKET—Outer—L.H.	1		85	UR.2359	WASHER—Adjusting—Idler Lever (.039" Thick)	2	
9	UR.4437	SEAT—Ball Pin—Tube	1		86	UR.2360	WASHER—Adjusting—Idler Lever (.044" Thick)	2	
10	UR.4883	ASSEMBLY—Socket—R.H. Drag Link	1		87	UR.2361	WASHER—Adjusting—Idler Lever (.049" Thick)	2	
11	UR.4879	SOCKET—Outer—R.H. Drag Link	1		88	UR.3384	PIECE—Distance—Idler Lever	1	
12	UR.4437	SEAT—Ball Pin—Tube	1		89	UR.1119	WASHER—Oil Seal—Idler Lever	1	
13	UR.4878	TUBE—Sponge Drag Link	1		90	UA.1254/Z	WASHER—Plain—Pin—Idler Lever	1	
14	RE.7881	NIPPLE—Grease—Sockets	4		91	UA.304/Z	NUT—Pin—Idler Lever	1	
15	UR.4064	PLUG	4		92	RE.7881	NIPPLE—Grease—Idler Lever	1	
16	KB.1095/R	WASHER—Plug	4		93	UR.4882	LEVER—Centre Steering	1	
17	RF.7552	SPRING—Ball Joint—Steering Tube	4		94	UR.3411	PIN—Centre Steering Lever	1	
18	RF.7556	SEAT—Spring	4		95	UR.3385	WASHER—Distance—Centre Steering Lever	1	
19	RF.8789	BALL—Ball Joint	4		96	UR.1111	RETAINER—Seal—Centre Steering Lever	2	
20	UR.4452	CLIP—Retaining—Seal—Grease	4		97	UR.1112	RING—Sealing—Centre Steering Lever	2	
21	UR.4442	SPRING—Seal—Grease	4		98	UR.1134	BEARING—Taper Roller—Centre Steering Lever	2	
22	UR.4505	SEAL—Ball Pin—Steering Tube	4		99	UR.1113	PIECE—Distance—Bearing Housing—Centre Steering Lever	1	
23	UR.4443	SEAT—Seal—Grease	4		100	UR.1114	WASHER—Adjusting—Bearing Housing—Centre Steering Lever	1	
24	UR.4082	PIN—Ball—Steering Tube	4		101	UR.3206	WASHER—Adjusting—Centre Steering Lever (.100" thick)	1	
25	UR.2710	NUT—Castellated—Ball Pin	4		102	UR.3207	WASHER—Adjusting—Centre Steering Lever (.125" Thick)	1	
26	K.4603/Z	PIN—Split—Ball Pin	4		103	UR.3208	WASHER—Adjusting—Centre Steering Lever (.159" Thick)	1	
27	UR.3931	BOLT—Socket Clamping	4		104	UR.3209	WASHER—Adjusting—Centre Steering Lever (.175" Thick)	1	
28	UA.1102/Z	NUT—Bolt—Socket Clamping	4		105	UR.1115	WASHER—Adjusting—Centre Steering Lever (.187" Thick)	1	
29	K.4603/Z	PIN—Split—Socket Clamping	4		106	UR.1441	WASHER—Adjusting—Centre Steering Lever (.250" Thick)	1	
30	UR.4453	ASSEMBLY—Cross Steering Tube—L.H.	1		107	UA.1254/Z	WASHER—Plain—Pin—Centre Steering Lever	1	
31	UR.3726	†TUBE—Cross Steering—L.H.	1		108	UA.304/Z	NUT—Pin—Centre Steering Lever	1	
32	UR.4441	†SOCKET—Inner	1		109	RF.6757	BEARING—Needle Roller—Centre Steering Lever	20	
33	UR.4437	SEAT—Ball Pin	1		110	RF.7364	BEARING—Needle Roller—Centre Steering Lever	20	
34	K.4810/R	†PIN—Taper	2		111	UR.3248	ROLLER RACE—Centre Steering Lever	1	
35	UR.4454	ASSEMBLY—Cross Steering Tube—R.H.	1		112	RE.7881	NIPPLE—Grease—Centre Steering Lever	2	
36	UR.3726	†TUBE—Cross Steering—R.H.	1						
37	UR.4440	†SOCKET—Inner	1						
38	UR.4437	SEAT—Ball Pin	1						
39	K.4810/R	†PIN—Taper	2						
40	RE.7881	NIPPLE—Grease—Sockets	2						
41	UR.4064	PLUG—Ball Joints	2						
42	KB.1095/R	WASHER—Plug—Ball Joints	2						
43	RF.7552	SPRING—Ball Joint	2						
44	RF.7556	SEAT—Spring—Ball Joint	2						
45	RF.8789	BALL—Ball Joint	2						
46	UR.4452	CLIP—Retaining—Seal—Grease	2						
47	UR.4442	SPRING—Seal—Grease	2						
48	UR.4505	SEAL—Grease—Ball Pin—Outer	2	Alternatives.					
49	UR.4506	SEAL—Grease—Ball Pin—Outer	2						
50	UR.4507	SEAL—Grease—Ball Pin—Outer	2	Alternatives.					
51	UR.4443	SEAT—Seal—Grease	2						
52	UR.4082	PIN—Ball—Cross Steering Lever	2	Alternatives.					
53	UR.4083	PIN—Ball—Cross Steering Lever	2						
54	UR.4084	PIN—Ball—Cross Steering Lever	2	Alternatives.					
55	UR.2710	NUT—Castellated—Ball Pin	2						
56	K.4603/Z	PIN—Split—Ball Pin	2	Alternatives.					
57	UR.4471	ASSEMBLY—Cross Beam—Centre Steering	1						
58	UR.4067	CROSS BEAM—Centre Steering	1	Alternatives.					
59	UR.4468	SEAT—Ball Pin—Cross Beam	2						
60	RE.7881	NIPPLE—Grease—Cross Beam	2	Alternatives.					
61	UR.4064	PLUG—Ball Joints—Cross Beam	2						
62	KB.1095/R	WASHER—Plug—Ball Joints—Cross Beam	2	Alternatives.					
63	RF.7552	SPRING—Ball Joint—Cross Beam	2						
64	RF.7556	SEAT—Spring—Ball Joint—Cross Beam	2	Alternatives.					
65	RF.8789	BALL—Ball Joint—Cross Beam	2						
66	UR.3420	SPRING—Oil Seal—Cross Beam	2	Alternatives.					
67	UR.3427	SEAL—Oil—Ball Joint—Cross Beam	2						
68	UR.4068	WASHER—Protecting—Cross Beam Seals	4	Alternatives.					
69	UR.4082	PIN—Ball—Cross Beam	2						
70	UR.4083	PIN—Ball—Cross Beam	2	Alternatives.					
71	UR.4084	PIN—Ball—Cross Beam	2						
72	UR.2710	NUT—Castellated—Ball Pin	2	Alternatives.					
73	K.4603/Z	PIN—Split—Ball Pin	2						
74	UR.3871	ASSEMBLY—Idler Lever	1	Alternatives.					
75	UR.3405	†LEVER—Idler	1						
76	UR.1041	†BUSH—Idler Lever	2	Alternatives.					
77	UR.3411	PIN—Idler Lever	1						

Items marked † are not supplied as individual parts

Silver Cloud II —From SRA1 Bentley S2 —From B1AA
 —From SPA2 —From B2AM
 Silver Cloud II LWB—From LCA1 Bentley S2 LWB—From LBA1
 Bentley Continental S2—From BCIAR

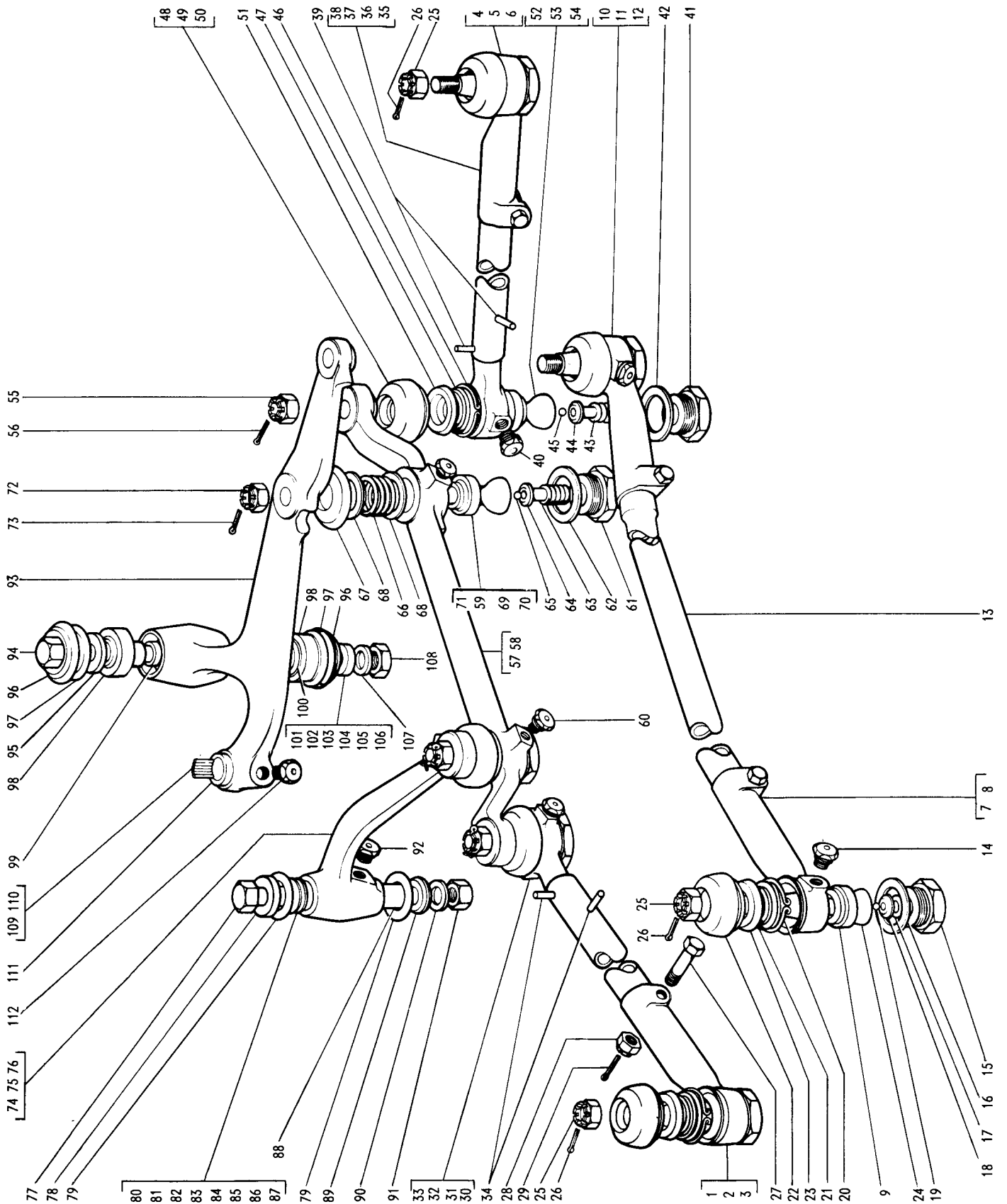
STEERING—

DRAG LINK AND TRACK RODS—L.H. CARS

PARTS LIST

ROLLS-ROYCE SILVER CLOUD II,

BENTLEY S2, BENTLEY CONTINENTAL S2,



STEERING—

DRAG LINK AND TRACK RODS—L.H. CARS

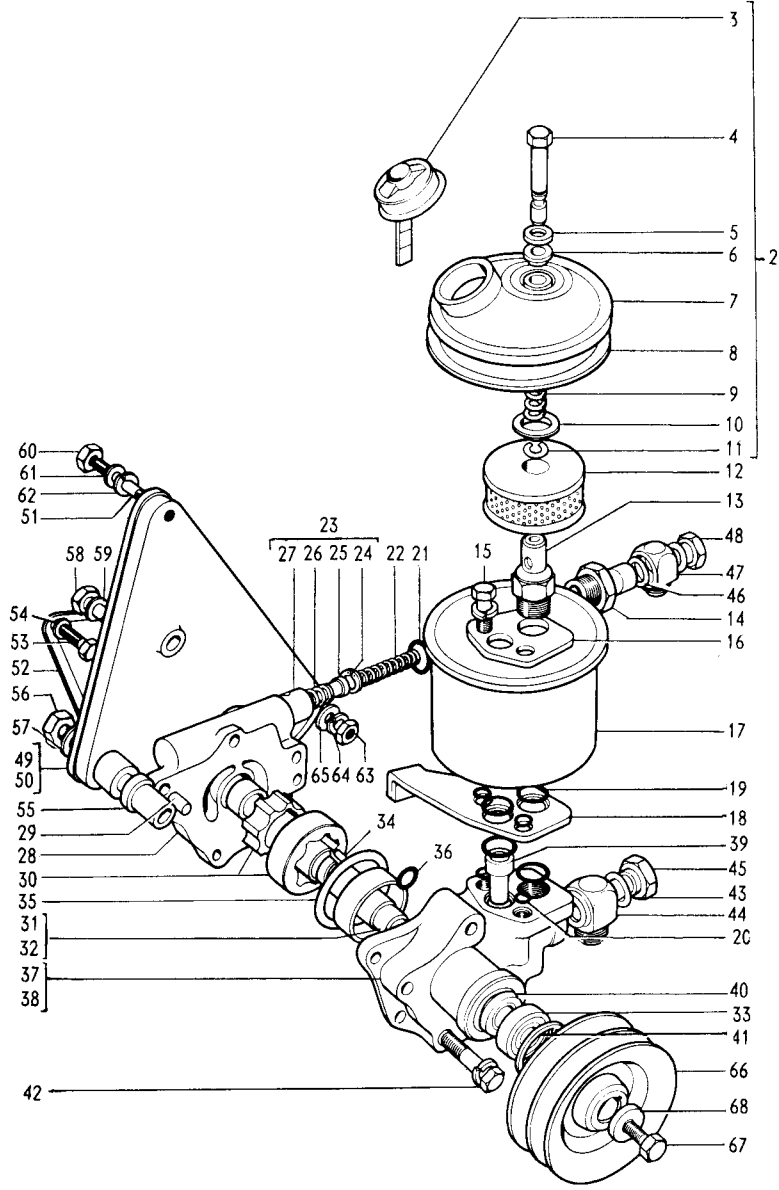
PARTS LIST

ROLLS-ROYCE SILVER CLOUD II,



BENTLEY S2, BENTLEY CONTINENTAL S2,

Ref.	Part No.	Description	No. off	Remarks
1	UE.5671	ASSEMBLY-Power Steering Pump	1	
2	CD.1536	SUB-ASSEMBLY-Cap-Reservoir	1	
3	CD.623	SUB-ASSEMBLY-Filler Cap	1	
4	CD.624	STUD-Reservoir Cover	1	
5	CD.625	WASHER-Felt-Stud	1	
6	CD.626	GASKET-Stud-Cover	1	
7	CD.1537	COVER-Reservoir	1	
8	CD.628	GASKET-Rubber-Reservoir Cover	1	
9	CD.629	SPRING	1	
10	CD.630	CAP-Filter	1	
11	CD.1538	CIRCLIP-Cover	1	
12	CD.633	ELEMENT-Filter	1	
13	CD.1535	STUD	1	
14	UE.2396	ADAPTOR-Valve Cap	1	
15	CD.1533	SCREWS-Securing-Reservoir	2	
16	CD.637	PLATE-Reinforcement-Reservoir	1	
17	CD.1539	RESERVOIR	1	
18	UE.5657	BRACKET-Mounting	1	
19	CD.639	GASKET-Rubber-Body	4	
20	CD.641	GASKET-Rubber-Stud-Reservoir to Body	4	
21	CD.662	RING-'O'-Adaptor	1	
22	CD.646	SPRING-Flow Control Valve	1	
23	CD.665	ASSEMBLY-Valve	1	
24	CD.645	RING-Retaining-Relief Valve	1	
25	CD.664	VALVE-Relief	1	
26	UE.4172	SPRING-Relief Valve	1	
27	CD.643	VALVE-Flow Control	1	
28	CD.653	ASSEMBLY-Cover	1	
29	CD.652	DOWEL	2	
30	CD.654	ROTOR	1	
31	CD.656	ASSEMBLY-Shaft	1	
32	CD.655	SHAFT	1	
33	CD.660	RACE-Ball	1	
34	CD.647	KEY-Shaft	1	
35	CD.648	RING-'O'-Body to Cover	1	
36	CD.1531	RING-'O'-Flow Director	1	
37	CD.1527	ASSEMBLY-Body	1	
38	CD.1528	SUB-ASSEMBLY-Body and Bush	1	
39	CD.1529	TUBE-Venturi	1	
40	CD.1530	SEAL-Oil	1	
41	CD.661	RING-Retaining-Ball Race	1	
42	CD.658	BOLT-Body to Cover	5	
43	UE.2513	RING-Sealing-Inlet Connection	2	
44	UE.2506	BANJO-Inlet	1	
45	UE.2353	BOLT-Banjo-Inlet	1	
46	UE.2514	RING-Sealing-Outlet Connection	2	
47	UE.2507	BANJO-Outlet	1	
48	UE.2354	BOLT-Banjo-Outlet	1	
49	UE.5662	ASSEMBLY-Swivel Bracket-Power Steering Pump	1	
50	UE.5663	† BRACKET-Swivel-Power Steering Pump	1	
51	UA.912/Z	STUD-Swivel Bracket	1	
52	UE.4393	JOINT-Support Bracket-Power Steering Pump	1	
53	UA.161/Z	SETSCREW-Support Bracket-Power Steering Pump	3	
54	UA.1252/Z	WASHER-Plain-SetscREW-Support Bracket-Power Steering Pump	3	
55	UE.5660	PIECE-Distance-SetscREW-Support Bracket	2	
56	UE.5682	SETSCREW-Power Steering Pump Bracket	2	
57	UA.1253/Z	WASHER-SetscREW-Power Steering Pump Bracket	2	
58	UA.204/Z	SETSCREW-Mounting Bracket to Swivel	1	
59	UA.1253/Z	WASHER-Plain-SetscREW-Mounting Bracket to Swivel	1	
60	UA.302/Z	NUT-Stud-Pivot-Swivel Bracket	1	
61	UA.1252/Z	WASHER-Plain-Stud-Pivot-Swivel Bracket	1	
62	K.9009/Z	WASHER-Spring-Stud-Pivot-Swivel Bracket	1	
63	UA.302/Z	NUT-Stud-Swivel Bracket Adjusting	1	
64	K.9009/Z	WASHER-Spring-Stud-Swivel Bracket Adjusting	1	
65	UA.6103/Z	WASHER-Plain-Stud-Swivel Bracket Adjusting	1	
66	UE.5647	PULLEY-Steering Pump	1	
67	UE.683	SETSCREW-Pulley-Steering Pump	1	
68	UE.684	WASHER-SetscREW-Pulley-Steering Pump	1	



Items marked † are not supplied as individual parts

Silver Cloud II —From SRA1 Bentley S2 —From BIAA
 —From SPA2 —From B2AM
 Silver Cloud II LWB—From LCA1 Bentley S2 LWB—From LBA1
 Bentley Continental S2—From BCIAR

**STEERING—
 POWER PUMP**

PARTS LIST

ROLLS-ROYCE SILVER CLOUD II,

BENTLEY S2, BENTLEY CONTINENTAL S2,



Ref.	Part No.	Description	No. off	Remarks	Ref.	Part No.	Description	No. off	Remarks	
1	UR.5013	ASSEMBLY-Hose-Valve Return	1	L.H. Cars	62	UR.3252	ASSEMBLY-Power Cylinder-Elbow and Adaptor	1		
2	UR.5014	HOSE-Valve Return	1			63	UR.1920	ASSEMBLY-Power Cylinder	1	
3	UR.1899	NUT	2			64	UR.1236	† CYLINDER-Power	1	
4	UR.1900	SOCKET	2			65	RG.3076	BUSH-Power Cylinder	1	
5	UR.1901	NIPPLE	2			66	UR.2546	ADAPTOR-Power Cylinder	1	
6	UR.4826	ASSEMBLY-Hose-Valve Return	1	R.H. Cars	67	UR.2547	ELBOW-Power Cylinder	1		
7	UR.4822	HOSE-Valve Return	1			68	UR.1300	JAW-Cylinder to Steering Lever	1	
8	UR.1899	NUT	2			69	UA.355/Z	NUT-Lock-Jaw-Cylinder to Steering Lever	1	
9	UR.1900	SOCKET	2			70	UR.4762	RING-Sealing-Jaw-Cylinder to Steering Lever	2	
10	UR.1901	NIPPLE	2			71	UR.3250	WASHER-Retaining-Seal	2	
11	UE.2506	BANJO-Valve Return	1	L.H. Cars	72	UR.3249	WASHER-Spacer	2		
12	UE.2513	RING-Sealing-Banjo	2			73	UR.3293	RIVET-Tubular	1	
13	UE.2353	BOLT-Banjo-Return Valve	1			74	UR.3292	WASHER-Retaining	2	
14	UR.4824	ASSEMBLY-Hose-Valve to Ram-Front	1			75	UR.1298	PIN-Connecting-Cylinder to Steering Lever	1	
15	UR.4820	HOSE-Valve to Ram-Front	1			76	UR.1937	BRACKET-Upper-Power Cylinder	1	
16	UR.1902	NUT	2	R.H. Cars	77	UR.1938	BRACKET-Lower-Power Cylinder	1		
17	UR.1903	SOCKET	2			78	UR.3372	BOLT-Mounting-Power Cylinder	1	
18	UR.1904	NIPPLE	2			79	UA.1255/Z	WASHER-Plain-Bolt-Mounting-Power Cylinder	5	
19	UR.5011	ASSEMBLY-Hose-Valve to Ram-Front	1			80	UA.455/Z	NUT-Bolt-Mounting-Power Cylinder	1	
20	UR.5012	HOSE-Valve to Ram Front	1			81	K.4608/Z	PIN-Split-Bolt-Mounting-Power Cylinder	1	
21	UR.1902	NUT	2	L.H. Cars	82	UA.103/Z	BOLT-Lower Bracket-Power Cylinder	4		
22	UR.1903	SOCKET	2			83	UA.301/Z	NUT-Bolt-Lower Bracket-Power Cylinder	4	
23	UR.1904	NIPPLE	2			84	K.9008/Z	WASHER-Spring-Bolt-Lower Bracket-Power Cylinder	4	
24	UR.5011	ASSEMBLY-Hose-Valve to Ram-Rear	1							
25	UR.5012	HOSE-Valve to Ram-Rear	1							
26	UR.1902	NUT	2	R.H. Cars						
27	UR.1903	SOCKET	2							
28	UR.1904	NIPPLE	2							
29	UR.4825	ASSEMBLY-Hose-Valve to Ram-Rear	1							
30	UR.4821	HOSE-Valve to Ram-Rear	1							
31	UR.1902	NUT	2	L.H. Cars						
32	UR.1903	SOCKET	2							
33	UR.1904	NIPPLE	2							
34	UR.5015	ASSEMBLY-Hose-Valve Supply	1							
35	UR.3186	ADAPTOR-Hose-Valve Supply	1							
36	UR.3188	CONNECTOR-Hose-Valve Supply	1	R.H. Cars						
37	UR.3190	BANJO-Valve Supply	1	L.H. Cars						
38	UE.2507	BANJO-Valve Supply	1	R.H. Cars						
39	UE.2514	RING-Sealing-Banjo-Valve Supply	2							
40	UE.2354	BOLT-Banjo-Valve Supply	1							
41	UR.4827	ASSEMBLY-Hose-Extension-Valve Supply	1	R.H. Cars						
42	UR.4823	HOSE-Extension-Valve Supply	1							
43	UR.1902	NUT	2							
44	UR.1903	SOCKET	2							
45	UR.1904	NIPPLE	2							
46	UE.2507	BANJO-Valve to Ram	2							
47	UE.2514	RING-Sealing-Banjo Valve to Ram	4							
48	UE.2354	BOLT-Banjo-Valve to Ram	2							
49	UR.4516	CLIP-Hose-Ram	1							
50	UA.107/Z	BOLT-Clip-Hose-Ram	1							
51	UR.1362	PIECE-Distance-Clip-Hose-Ram	1							
52	UA.351/Z	NUT-Bolt-Clip-Hose-Ram	1							
53	UD.1803	CLIP-Hose-Ram	1	R.H. Cars						
54	UR.3430	CLIP-Hoses-Valve to Ram	4							
55	K.4006/Z	NUT-Clip	2							
56	K.4404/Z	WASHER-Plain-Clip	2							
57	UD.4315	CLIP-Hose	1							
58	UR.5017	CLIP-Hose	1	L.H. Cars						
59	UR.5016	CLIP-Hose	1							
60	K.4006/Z	NUT-Clip	3							
61	K.4404/Z	WASHER-Plain-Clip	3							

Items marked † are not supplied as individual parts

Silver Cloud II —From SRA1 Bentley S2 —From B1AA
 —From SPA2 —From B2AM
 Silver Cloud II LWB—From LCA1 Bentley S2 LWB—From LBA1
 Bentley Continental S2—From BCIAR

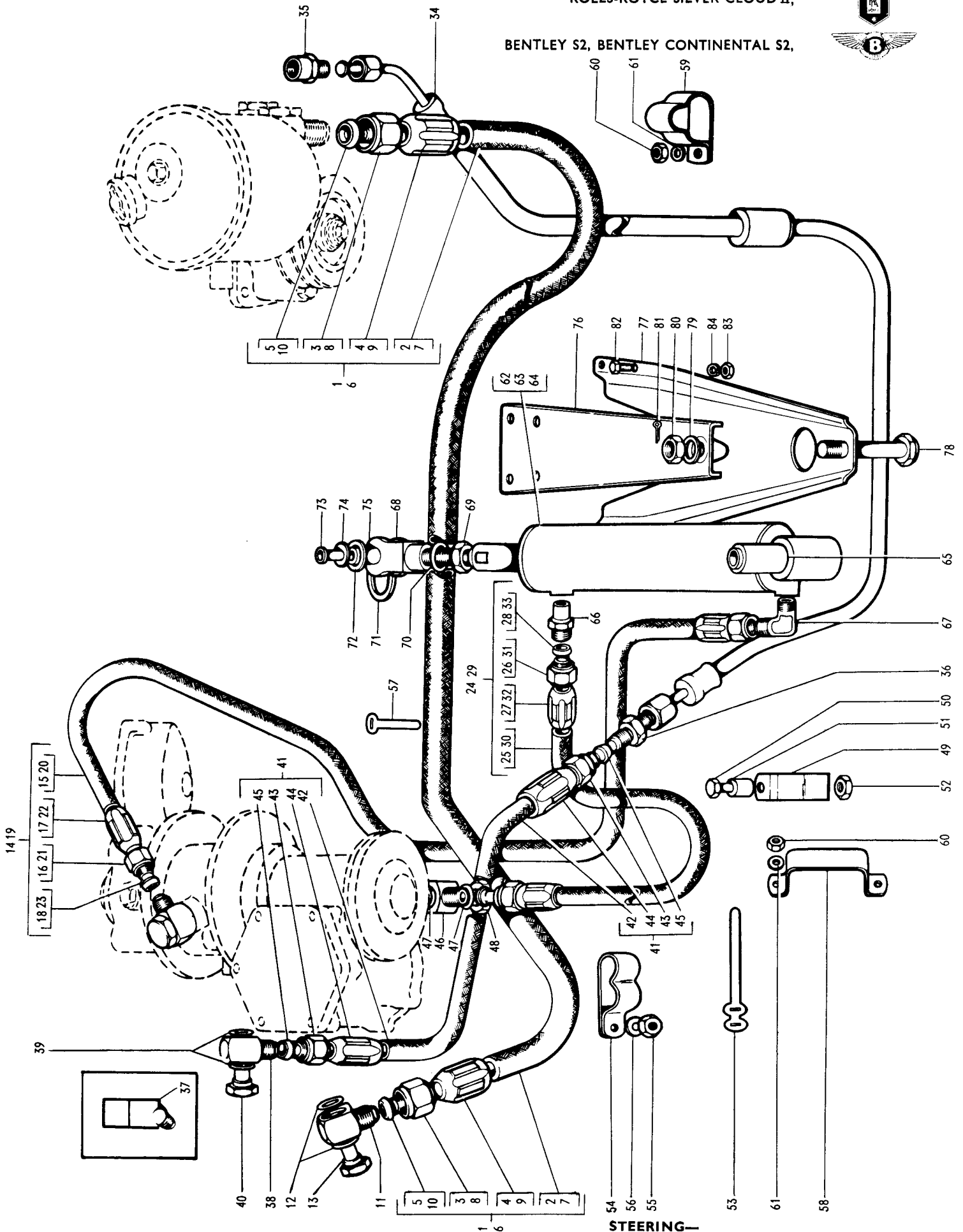
STEERING—

POWER CYLINDER AND HOSES

PARTS LIST

ROLLS-ROYCE SILVER CLOUD II,

BENTLEY S2, BENTLEY CONTINENTAL S2,



STEERING—

POWER CYLINDER AND HOSES

PARTS LIST

ROLLS-ROYCE SILVER CLOUD II,



BENTLEY S2, BENTLEY CONTINENTAL S2,

Ref.	Part No.	Description	No. off	Remarks	Ref.	Part No.	Description	No. off	Remarks	
1	UR.4692	ASSEMBLY—Control Quadrant and Stop Plate	1		66	UR.4274	ASSEMBLY—Operating Lever—Gear Change	1		
2	UR.4690	†QUADRANT—Control	1		67	UR.4109	†LEVER—Operating—Gear Change	1		
3	RF.9121	PLATE—Stop—Forward	1	Not used with Buttonless Gear Change Lever.	68	RF.9500	PIN—Operating—Gear Change	1		
4	KC.120/Z	SETSCREW—Forward Stop Plate	1			69	RF.6501	BUSH—Rubber	1	
5	KB.7103/R	WASHER—Tab—Setscrew—Forward Stop Plate	1			70	RG.5763	BUSH—Clamping—Control Linkage	1	
6	RF.9122	PLATE—Stop—Reverse	1			71	UA.157/Z	BOLT—Clamping—Operating Lever	1	
7	RF.9176	DOWEL—Stop Plates	4			72	UA.302/Z	NUT—Bolt—Operating Lever	1	
8	RF.9172	STUD—Reverse Stop Plate	1			73	UG.2839	ASSEMBLY—Fulcrum Lever	1	
9	UG.3855	ASSEMBLY—Control Quadrant and Stop Plate	1			74	UG.2840	†LEVER—Fulcrum—Bracket	1	
10	UR.4690	†QUADRANT—Control	1			75	RG.7242	†PIN—Ball—Fulcrum Lever	1	
11	UR.1232	PLATE—Stop—Reverse	1		Used with Buttonless Gear Change Lever.	76	UG.2842	†COLLAR—Ball Pin—Fulcrum Lever	1	
12	RF.9176	DOWEL—Reverse Stop Plate	1			77	UG.2841	†BOSS—Fulcrum Lever	1	
13	RF.9172	STUD—Reverse Stop Plate	1			78	RE.16212	BUSH—Bearing—Fulcrum Lever	2	
14	KB.7103/R	WASHER—Tab—Reverse Stop Plate	1			79	UG.2843	PIECE—Distance—Fulcrum Lever	1	
15	RF.10041	BOSS—Captive—Reverse Stop Plate	1			80	UE.3993	BUSH—Metalastik—Fulcrum Lever	1	
16	RF.10040	PLATE—Guide—Control Quadrant	1			81	UE.3992	PIECE—Distance—Metalastik Bush	1	
17	UR.4683	COVER—Bottom—Quadrant	1			82	KC.153/Z	BOLT—Metalastik Bush	2	
18	RF.9963	SETSCREW—Cover	3			83	K.4404/Z	WASHER—Plain—Bolt—Metalastik Bush	2	
19	RF.9970	WASHER—Plain—Setscrew—Cover	5			84	K.4006/Z	NUT—Bolt—Metalastik Bush	2	
20	RF.9964	RING—'O'—Quadrant Cover	6		85	UA.1907/Z	BOLT—Metalastik Bush to Jaw	1		
21	UR.4686	COVER—Flasher—Switch—Quadrant	1		86	K.4446/Z	WASHER—Plain—Bolt—Metalastik Bush to Jaw	1		
22	UR.4682	SCREW—Socket—Heat Cover	2		87	K.4304/Z	NUT—Bolt—Metalastik Bush to Jaw	1		
23	RF.6519	DOWEL—Locating—Quadrant	1		88	UA.116/Z	BOLT—Fulcrum Lever to Frame	1		
24	RF.10041	BOSS—Captive—Reverse Plate	1		89	UA.2052/Z	WASHER—Plain—Bolt—Fulcrum Lever to Frame	2		
25	KB.7103/R	WASHER—Tab—Captive Boss	1		90	UA.1251/Z	WASHER—Plain—Bolt—Fulcrum Lever to Frame	1		
26	RF.9157	ASSEMBLY—Lever and Pins	1		91	UA.301/Z	NUT—Bolt—Fulcrum Lever to Frame	1		
27	RF.9260	ROD—Operating—Gear Control	1		92	UG.3542	ROD—Operating Lever to Fulcrum Lever	1		
28	RF.9156	PIECE—Distance—Pin—Operating Rod	1		93	UG.698	JAW—Rod—Operating Lever	1		
29	K.4601/Z	PIN—Split—Ratchet Control	2		94	UA.352/Z	NUT—Jaw—Operating Lever	1		
30	UR.1572	ASSEMBLY—Control Lever	1		95	UG.2844	ASSEMBLY—Jaw and Nut	1		
31	UR.1213	†ARM—Control Lever	1	Not used with Buttonless Gear Change Lever.	96	UG.2826	ASSEMBLY—Operating and Cross Tubes	1		
32	RF.9254	LEVER—Fork	1			97	UG.1035	HOUSING—Ball Joint—R.H.—Support Bracket	1	
33	RF.9125	PLATE—Stop—Top—Lever	1			98	UG.997	TUBE—Distance—Bracket—Support—R.H.	1	
34	RF.9126	PLATE—Stop—Bottom—Lever	1			99	RG.5085	BUSH—Support Bracket—R.H.	2	
35	KB.1878/R	RIVET—Stop Plate	2			100	UA.2051/Z	WASHER—Plain—Support Bracket—R.H.	1	
36	UG.141	WASHER—Control Lever	1			101	UA.1702/Z	WASHER—Plain—Support Bracket—R.H.	1	
37	UR.1548	KNOB—Control Lever	1			102	K.4307/Z	NUT—Support Bracket—R.H.	1	
38	RF.9117	SPRING—Stop—Button	1			103	KC.175/Z	BOLT—Operating Lever to Rod	1	
39	RE.9414	BUTTON—Control Lever	1			104	K.4404/Z	WASHER—Plain—Bolt—Operating Lever to Rod	1	
40	K.4003/Z	NUT—Button Control	1		105	K.4307/Z	NUT—Bolt—Operating Lever to Rod	1		
41	UR.1212	ASSEMBLY—Control Lever	1		106	UG.2830	ASSEMBLY—Isolating Links and Socket	1		
42	UR.1213	†ARM—Control Lever	1	Used with Buttonless Gear Change Lever.	107	UG.2831	LINK—Isolating Upper	1		
43	UR.1214	LEVER—Fork	1			108	UG.2832	LINK—Isolating Lower	1	
44	RF.9125	PLATE—Stop—Top—Lever	1			109	UG.694	SOCKET—Ball Joint	1	
45	RF.9126	PLATE—Stop—Bottom—Lever	1			110	KB.1970/R	RIVET—Snap—Isolating Links	2	
46	KB.1878/R	RIVET—Stop Plate	2			111	RG.5085	BUSH—Isolating Links—Pivot	2	
47	UR.1254	KNOB—Control—Lever	1			112	UG.684	TUBE—Distance—Isolating Links—Pivot	1	
48	RF.9145	PIN—Anchor—Spring Adaptor	1			113	K.9739/Z	PIECE—Distance—Isolating Links—Pivot	1	
49	RF.9116	SPRING—Control Lever	1			114	KC.805/Z	BOLT—Isolating Links—Pivot	1	
50	RF.9124	ADAPTOR—Spring—Control Lever	1			115	K.4404/Z	WASHER—Plain—Bolt—Isolating Links—Pivot	1	
51	RF.9152	PIN—Pivot—Fork	1		116	K.4307/Z	NUT—Bolt—Isolating Links—Pivot	1		
52	UR.2822	PIN—Split—Pivot Pin	1		117	UG.2846	ROD—Operating—Fulcrum Lever to Operating Lever	1		
53	RF.9508	PIVOT—Top—Operating Tube	1		118	UG.2847	ROD—Operating—Gearbox Lever to Operating Lever	1		
54	UR.4429	TUBE—Operating Gear Change	1	Standard Length 1" Longer than Standard.	119	UA.352/Z	NUT—Operating Rods	5		
55	UR.5082	TUBE—Operating Gear Change	1		1" Shorter than Standard. 2" Longer than Standard.	120	UG.699	HOUSING—Ball Joint	4	
56	UR.5092	TUBE—Operating Gear Change	1				121	UE.1036	PLUG—Ball Joint Housing	6
57	UR.5102	TUBE—Operating Gear Change	1			122	RG.6768	COVER—Dust—Ball Joint Housing	6	
58	RF.9457	BUSH—Bearing—Operating Tube—Upper	1	As required.	123	RG.6770	PIN—Ball Joint Housing	6		
59	UR.3181	BUSH—Bearing—Operating Tube—Lower	1			124	UA.352/Z	NUT—Ball Joint Housing	6	
60	KC.505/R	KEY—Woodruff—(.125" Wide)—Operating Tube	1							
61	KC.506/R	KEY—Woodruff—(.1255" Wide)—Operating Tube	1							
62	KC.507/R	KEY—Woodruff—(.126" Wide)—Operating Tube	1							
63	KC.508/R	KEY—Woodruff—(.1265" Wide)—Operating Tube	1							
64	UR.3180	SCREW—Adjusting—Operating Tube	1							
65	UA.352/Z	NUT—Adjusting Screw	1							

Items marked † are not supplied as individual parts

Silver Cloud II —From SRA1 Bentley S2 —From B1AA
 —From SPA2 —From B2AM
 Silver Cloud II LWB—From LCA1 Bentley S2 LWB—From LBA1
 Bentley Continental S2—From BCIAR

STEERING—

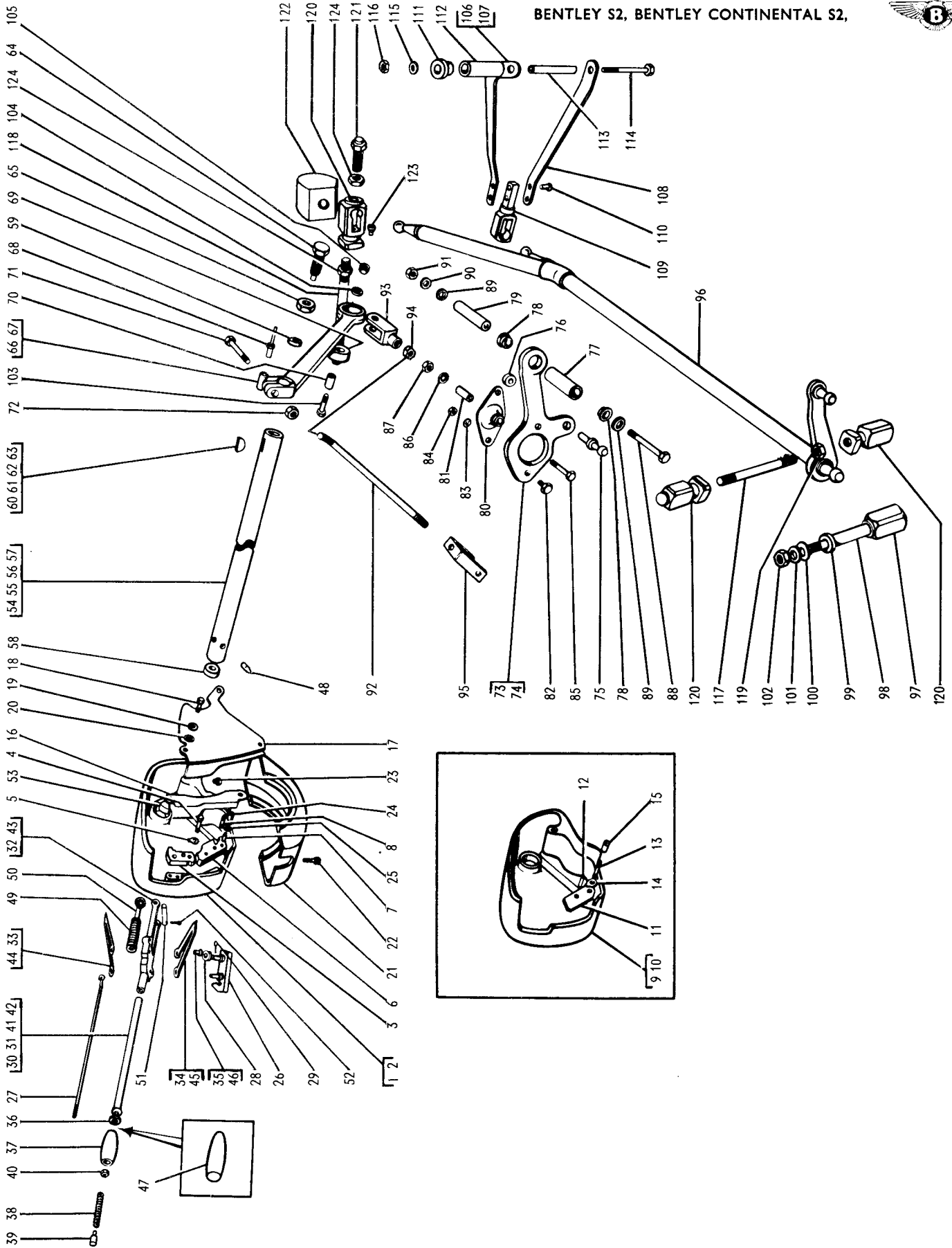
GEAR CONTROL MECHANISM (R.H. Cars).

PARTS LIST

ROLLS-ROYCE SILVER CLOUD II,



BENTLEY S2, BENTLEY CONTINENTAL S2,



STEERING—

GEAR CONTROL MECHANISM (R.H. Cars).

PARTS LIST

ROLLS-ROYCE SILVER CLOUD II,



BENTLEY S2, BENTLEY CONTINENTAL S2,

Ref.	Part No.	Description	No. off	Remarks	Ref.	Part No.	Description	No. off	Remarks	
1	UR.4692	ASSEMBLY—Control Quadrant and Stop Plate	1		70	UA.157/Z	BOLT—Clamping—Operating Lever	1		
2	UR.4690	†QUADRANT—Control	1		71	UA.302/Z	NUT—Bolt—Operating Lever	1		
3	RF.9121	PLATE—Stop—Forward	1	Not used with Buttonless Gear Change Lever.	72	UG.3609	ASSEMBLY—Relay Lever	1		
4	KC.120/Z	SETSCREW—Forward Stop Plate	1			73	UG.3529	†LEVER—Relay	1	
5	KB.7103/R	WASHER—Tab—Setscrew	1		74	RG.8338	†BOSS—Relay—Lever	1		
6	RF.9122	PLATE—Stop—Reverse	1		75	RF.9423	BUSH—Oilite—Relay Lever	2		
7	RF.9176	DOWEL—Stop Plates	4		76	RF.6501	BUSH—Relay Lever	1		
8	RF.9172	STUD—Reverse Stop Plate	1		77	UG.3312	ROD—Operating—Relay Lever—Steering Col.	1		
9	UG.3855	ASSEMBLY—Control Quadrant and Stop Plate	1		78	UG.698	JAW—Rod—Relay Lever	2		
10	UR.4690	†QUADRANT	1	Used with Buttonless Gear Change Lever.	79	RG.5763	BUSH—Clamping—Rod—Relay Lever	2		
11	UR.1232	PLATE—Stop—Reverse	1			80	UE.3993	BUSH—Metalastik—Relay Lever	1	
12	RF.9176	DOWEL—Reverse Stop Plate	1		81	KC.171/Z	BOLT—Metalastik Bush—Relay Lever	2		
13	RF.9172	STUD—Reverse Stop Plate	1		82	K.4307/Z	NUT—Bolt	2		
14	KB.7103/R	WASHER Tab—Stud	1		83	K.4404/Z	WASHER—Plain—Bolt	2		
15	RF.10041	BOSS—Captive—Reverse Stop Plate	1		84	KC.175/Z	BOLT—Operating Rod—Relay Lever	2		
16	RF.10040	PLATE—Guide—Control Quadrant	1		85	K.4307/Z	NUT—Bolt	2		
17	UR.4683	COVER—Bottom—Quadrant	1		86	K.4404/Z	WASHER—Plain—Bolt	2		
18	RF.9963	SETSCREW—Cover	3		87	UA.352/Z	NUT—Rod—Operating Lever	2		
19	RF.9970	WASHER—Setscrew	5		88	K.4307/Z	NUT—Relay Lever—Isolating Beam	1		
20	RF.9964	RING—O' Quadrant Cover	6		89	KB.3904/Z	WASHER—Lever—Isolating Beam	1		
21	UR.4686	COVER—Flasher Switch—Quadrant	1		90	K.4404/Z	WASHER—Lever—Isolating Beam	1		
22	UR.4682	SCREW—Socket—Heat—Cover	2		91	UG.3301	ASSEMBLY—Control Rod—Relay Lever—Gearbox	1		
23	RF.6519	DOWEL—Locating—Quadrant	1		92	UG.3300	†ROD—Control—Relay Lever—Gearbox	1		
24	RF.10041	BOSS—Captive—Reverse Plate	1	Not used with Buttonless Gear Change Lever.	93	UG.3309	PIECE—Distance—Control Rod—Relay Lever—Gearbox	1		
25	KB.7103/R	WASHER—Tab—Captive Boss	1			94	UA.1910/Z	BOLT—Gearbox—Control Rod to Relay Lever	1	
26	RF.9157	ASSEMBLY—Lever and Pins	1		95	K.4446/Z	WASHER—Plain—Bolt	2		
27	RF.9260	ROD—Operating—Gear Control	1		96	K.4304/Z	NUT—Bolt	2		
28	RF.9156	PIECE—Distance—Pin—Operating Rod	2		97	UG.699	HOUSING—Ball Joint—Control Rod	1		
29	K.4601/Z	PIN—Split—Ratchet Control	1		98	UE.1036	PLUG—Ball Joint—Control Rod	1		
30	UR.1572	ASSEMBLY—Control Lever	1		99	UG.6768	COVER—Dust—Ball Joint—Control Rod	1		
31	UR.1213	†ARM—Control Lever	1	Not used with Buttonless Column Gear Change Lever.	100	UG.6770	PIN—Ball Joint—Control Rod	1		
32	RF.9254	LEVER—Fork	1			101	UA.352/Z	NUT—Control Rod	1	
33	RF.9125	PLATE—Stop—Top—Lever	1		102	UA.352/Z	NUT—Ball Joint Housing	1		
34	RF.9126	PLATE—Stop—Bottom—Lever	1		103	UG.3298	ASSEMBLY—Isolating Beam	1		
35	KB.1878/R	RIVET—Stop Plate	2		104	RG.5085	BUSH—Rubber—Beam to Mounting Bracket and Link	4		
36	UG.141	WASHER—Control Lever	1		105	RG.8335	WASHER—Plain—Beam to Isolating Link	1		
37	UR.1548	KNOB—Control Lever	1		106	RG.8415	WASHER—Plain—Beam to Isolating Link	1		
38	RF.9117	SPRING—Stop—Button	1		107	UG.684	TUBE—Distance—Frame Mounting Bracket	1		
39	RF.9414	BUTTON—Control Lever	1		108	UA.351/Z	NUT—Beam to Mounting Bracket and Link	2		
40	K.4003/Z	NUT—Button Control	1		109	UA.1251/Z	WASHER—Plain—Beam to Mounting Bracket and Link	2		
41	UR.1212	ASSEMBLY—Control Lever	1		110	UG.998	PIVOT—Isolating Beam—Relay Lever	1		
42	UR.1213	†ARM—Control Lever	1	Used with Buttonless Gear Change Lever.	111	UA.1252/Z	WASHER—Plain—Pivot to Beam	1		
43	UR.1214	LEVER—Fork	1			112	UA.352/Z	NUT—Pivot to Beam	1	
44	RF.9125	PLATE—Stop—Top—Lever	1		113	UG.3305	ASSEMBLY—Mounting Bracket	1		
45	RF.9126	PLATE—Stop—Bottom—Lever	1		114	UA.102/Z	BOLT—Mounting Bracket to Frame Bracket	4		
46	KB.1878/R	RIVET—Stop Plate	2		115	UA.1251/Z	WASHER—Plain—Bolt	4		
47	UR.1254	KNOB—Control Lever	1		116	UA.351/Z	NUT—Bolt	4		
48	RF.9145	PIN—Anchor—Spring Adaptor	1	Standard length " longer than Std. " shorter than Std. 2" longer than Standard.	117	UG.3310	LINK—Isolating	1		
49	RF.9116	SPRING—Control Lever	1			118	UG.3311	PIVOT—Anchor—Link to Gearbox	1	
50	RF.9124	ADAPTOR—Spring—Control Lever	1			119	RG.5085	BUSH—Rubber—Link to Gearbox	2	
51	RF.9152	PIN—Pivot—Fork	1		120	RG.8335	WASHER—Link to Gearbox	1		
52	UR.2822	PIN—Split—Pivot Pin	1		121	UA.1253/Z	WASHER—Plain—Link to Gearbox	1		
53	RF.9508	PIVOT—Top—Operating Tube	1		122	UA.1252/Z	WASHER—Plain—Link to Gearbox	1		
54	UR.4429	TUBE—Operating Gear Change	1		123	UA.1251/Z	WASHER—Plain—Link to Gearbox	1		
55	UR.5082	TUBE—Operating Gear Change	1		124	UA.351/Z	NUT—Link to Gearbox	1		
56	UR.5092	TUBE—Operating Gear Change	1		125	UG.3303	STAY—Isolating Beam	1		
57	UR.5102	TUBE—Operating Gear Change	1							
58	RF.9457	BUSH—Bearing—Operating Tube—Upper	1	As required.						
59	UR.3181	BUSH—Bearing—Operating Tube—Lower	1							
60	KC.505/R	KEY—Woodruff—(.1250" wide)—operating tube	1							
61	KC.506/R	KEY—Woodruff—(.1255" wide)—Operating Tube	1							
62	KC.507/R	KEY—Woodruff—(.1260" wide)—Operating Tube	1							
63	KC.508/R	KEY—Woodruff—(.1265" wide)—Operating Tube	1							
64	UR.3180	SCREW—Adjusting—Operating Tube	1							
65	UA.352/Z	NUT—Adjusting Screw	1							
66	UR.4274	ASSEMBLY—Operating Lever—Gear Change	1							
67	UR.4109	†LEVER—Operating—Gear Change	1							
68	RF.9500	PIN—Operating Lever	1							
69	RF.6501	BUSH—Rubber—Operating Lever	1							

Items marked † are not supplied as individual parts

Silver Cloud II —From SRA1 Bentley S2 —From B1AA
 —From SPA2 —From B2AM
 Silver Cloud II LWB—From LCA1 Bentley S2 LWB—From LBA1
 Bentley Continental S2—From BCIAR

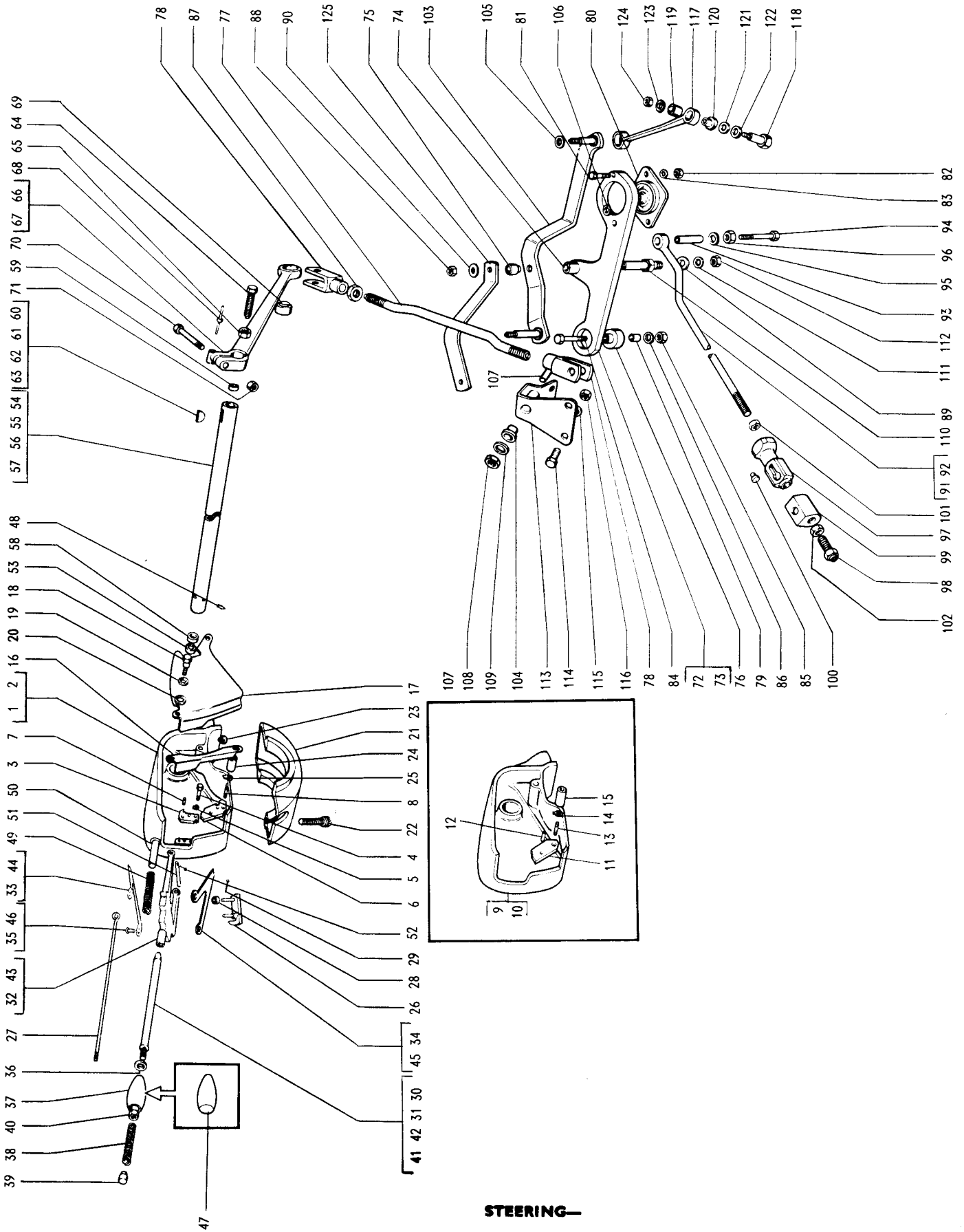
STEERING—

GEAR CONTROL MECHANISM (L.H. Cars)

PARTS LIST

ROLLS-ROYCE SILVER CLOUD II,

BENTLEY S2, BENTLEY CONTINENTAL S2,



STEERING—

GEAR CONTROL MECHANISM (L.H. Cars)