

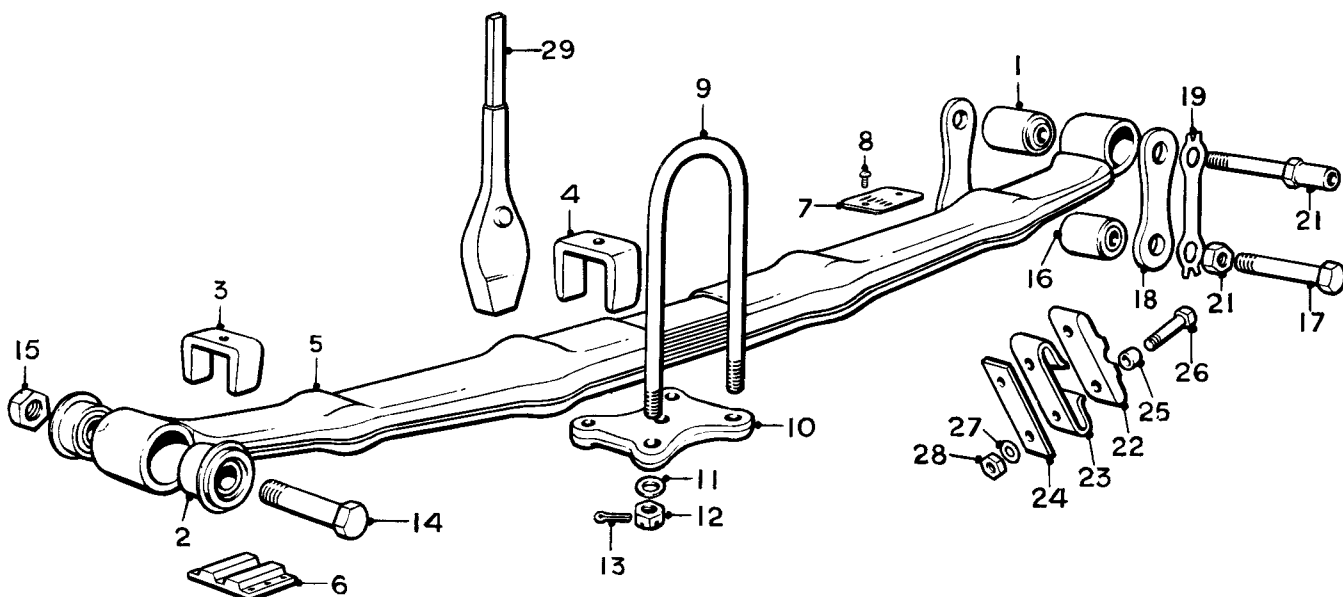
SECTION H
REAR SUSPENSION

| Title | Assembly | Page No. |
|-------------------|--------------------|-----------------|
| REAR ROAD SPRING | | H. 1 |
| | 'CONTINENTAL' CARS | H. 2 |
| REAR SHOCK DAMPER | | H. 3 |
| ANTI-ROLL BAR | | H. 4 |



SPARES schedule

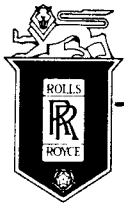
SILVER CLOUD AND BENTLEY 'S' TYPE



| Ref. | Part No. | Description | No off | Ref. | Part No. | Description | No off |
|------|------------|---|--------|------|-----------|-----------------------------|--------|
| | UR.3021 | SPRING, ROAD, L.H., 1100 lbs. ASS. | 1 | (10) | UR.1430 | Plate, bottom spring | 2 |
| | | (R.C. Cars) | | (11) | UA.1255/Z | Washer, adjusting, "U" bolt | 8 |
| (1) | UR.1301 | Bush, rear eye | 1 | (12) | UA.1105/Z | Nut, "U" bolt | 8 |
| (2) | UR.1173 | Bush, front eye | 1 | (13) | K.4608/Z | Pin, split, "U" bolt | 8 |
| (3) | UR.655 | Clip, outer | 2 | (14) | UR.1174 | Bolt, front anchorage | 2 |
| (4) | UR.656 | Clip, inner | 2 | (15) | UA.358/Z | Nut, bolt | 2 |
| (5) | UR.814 | Gaiter | 2 | (16) | UR.1301 | Bush, rear shackle | 2 |
| (6) | UR.1662 | Inter-leaving | 8 | (17) | UR.446 | Bolt, rear shackle | 2 |
| | KB.2024 | Rivet, .625" long | 2 | (18) | UR.445 | Plate, rear shackle | 4 |
| | KB.2028 | Rivet, .6875" long | 2 | (19) | UR.449 | Washer, tab | 4 |
| (7) | UR.2855 | Plate, poundage | 1 | (20) | UA.356/Z | Nut, rear shackle bolt | 4 |
| (8) | CS.35080/Z | Rivet, plate | 2 | (21) | UR.1030 | Bolt, rebound stop | 2 |
| | UR.3022 | SPRING, ROAD, R.H., 1200 lbs. ASS. | 1 | (22) | UR.1026 | Rubber, rebound | 2 |
| | | (As above) | | (23) | UR.1027 | Plate, backing, rubber | 2 |
| (9) | UR.1425 | Bolt, "U," 1100/1200 lbs. spring | 3 | (24) | UR.1028 | Strip, packing | 6 |
| | UR.1428 | Bolt, "U," 1200 lbs. spring | 1 | (25) | FW.1360 | Bush, rebound rubber | 4 |
| | UR.3022 | SPRING, ROAD, L.H., 1200 lbs. ASS. | 1 | (26) | UA.159/Z | Bolt, rebound rubber | 4 |
| | UR.2993 | SPRING, ROAD, R.H., 1300 lbs. ASS. | 1 | (27) | K.4410/Z | Washer, bolt | 4 |
| | | (As above except poundage) | | (28) | UA.302/Z | Nut, bolt | 4 |
| | UR.1425 | Bolt, "U," 1200 lbs. spring | 2 | (29) | UR.1021 | Rubber, bump | 2 |
| | UR.3414 | Bolt, "U," 1300 lbs. spring | 1 | | | | |
| | UR.3415 | Bolt, "U," 1300 lbs. spring | 1 | | | | |
| | | (R.C. Cars with Colonial springs) | | | | | |
| | UR.3021 | SPRING, ROAD, R. & L.H., 1100 lbs. ASSEMBLY | 2 | | | | |
| | | (L.C. Cars) | | | | | |
| | UR.1425 | Bolt, "U," 1100 lbs. spring | 3 | | | | |
| | UR.1428 | Bolt, "U," 1100 lbs. spring | 1 | | | | |
| | UR.3022 | SPRING, ROAD, 1200 lbs. ASSY. | 2 | | | | |
| | UR.1425 | Bolt, "U," 1200 lbs. spring | 3 | | | | |
| | UR.1428 | Bolt, "U," 1200 lbs. spring | 1 | | | | |
| | | (L.C. Cars with Colonial springs) | | | | | |

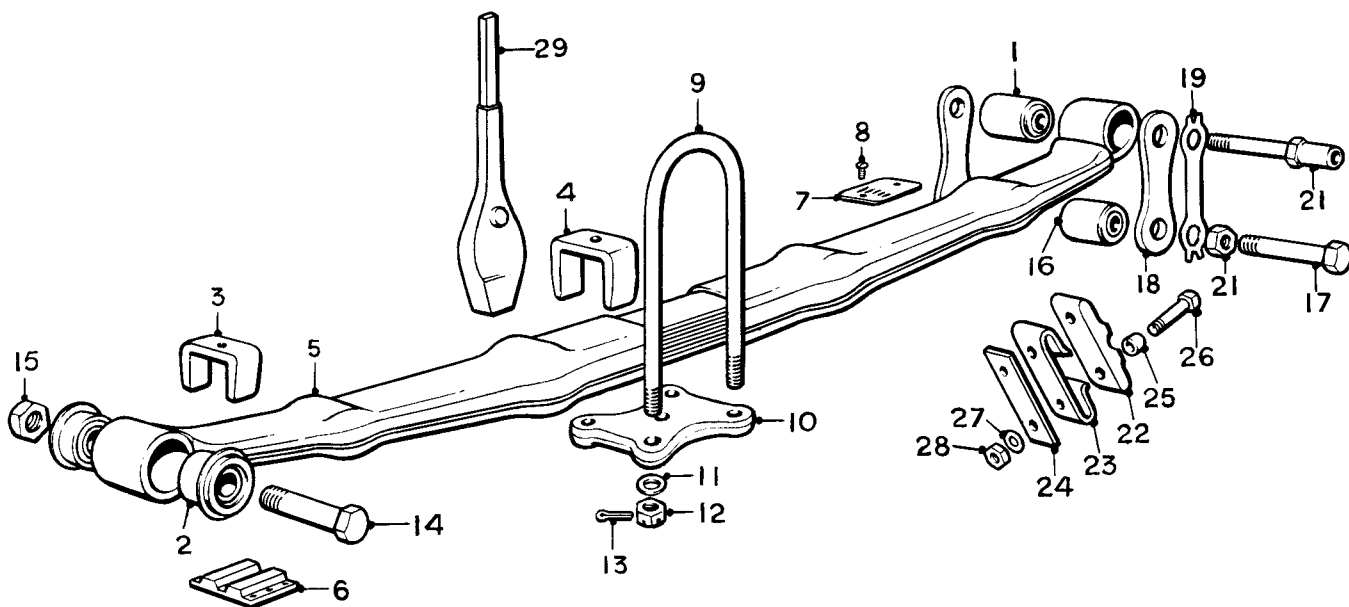
REAR SPRING

(All chassis except "Continental")



SPARES schedule

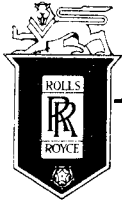
SILVER CLOUD AND BENTLEY 'S' TYPE



| Ref. | Part No. | Description | No off | Ref. | Part No. | Description | No off |
|------|------------|---|--------|------|-----------|-----------------------------|----------|
| | UR.3024 | SPRING, ROAD, L.H., 1000 lbs. ASS. | 1 | (10) | UR.1430 | Plate, bottom, spring | 2 |
| | | (R.C. Cars) | | (11) | UA.1255/Z | Washer, adjusting, "U" bolt | As reqd. |
| (1) | UR.1301 | Bush, rear eye | 1 | (12) | UA.1105/Z | Nut, "U" bolt | 8 |
| (2) | UR.1173 | Bush, front eye | 1 | (13) | K.4608/Z | Split pin, "U" bolt | 8 |
| (3) | UR.655 | Clip, outer | 2 | (14) | UR.1174 | Bolt, front anchorage | 2 |
| (4) | UR.656 | Clip, inner | 2 | (15) | UA.358/Z | Nut, bolt | 2 |
| (5) | UR.2342 | Gaiter | 2 | (16) | UR.1301 | Bush, rear shackle | 2 |
| (6) | UR.1662 | Interleaving | 8 | (17) | UR.446 | Bolt, rear shackle | 2 |
| | KB.2024 | Rivet, .625" long | 2 | (18) | UR.445 | Plate, rear shackle | 4 |
| | KB.2028 | Rivet, .6875" long | 2 | (19) | UR.449 | Washer, tab | 4 |
| (7) | UR.2855 | Plate, poundage | 1 | (20) | UA.356/Z | Nut, rear shackle bolt | 4 |
| (8) | CS.35080/Z | Rivet, plate | 2 | (21) | UR.1030 | Bolt, rebound stop | 2 |
| | UR.3021 | SPRING, ROAD, R.H. 1100 lbs. ASS. | 1 | (22) | UR.1026 | Rubber, rebound | 2 |
| | | (As above except poundage, and Gaiter) | | (23) | UR.1027 | Plate, backing, rubber | 2 |
| | | (R.C. Cars) | | (24) | UR.1028 | Strip, packing | 6 |
| | UR.814 | Gaiter | 2 | (25) | FW.1360 | Bush, rebound rubber | 4 |
| (9) | UR.1423 | Bolt, "U" 1000 lb. spring | 2 | (26) | UA.159/Z | Bolt, rebound rubber | 4 |
| | UR.1425 | Bolt, "U" 1100 lb. spring | 1 | (27) | K.4410/Z | Washer, bolt | 4 |
| | UR.1428 | Bolt, "U" 1100 lb. spring | 1 | (28) | UA.302/Z | Nut, bolt | 4 |
| | UR.3021 | SPRING, ROAD, L.H., 1100 lbs. ASS. | 1 | (29) | UR.1021 | Rubber, bump | 2 |
| | UR.3022 | SPRING, ROAD, R.H., 1200 lbs. ASS. | 1 | | | | |
| | | (As above except poundage) | | | | | |
| | | (R.C. Cars with Colonial springs) | | | | | |
| | UR.1425 | Bolt, "U," 1100/1200 lb. spring | 3 | | | | |
| | UR.1428 | Bolt, "U," 1100/1200 lb. spring | 1 | | | | |
| | UR.3024 | SPRING, ROAD, R. & L.H., 1000 lbs. ASSEMBLY | 2 | | | | |
| | | (L.C. Cars) | | | | | |
| | UR.1423 | Bolt, "U," 1000 lb. spring | 3 | | | | |
| | UR.1429 | Bolt, "U," 1000 lb. spring | 1 | | | | |
| | UR.3021 | SPRING, ROAD, R. & L.H., 1100 lbs. ASSEMBLY | 2 | | | | |
| | UR.1425 | Bolt, "U," 1100 lbs. spring | 3 | | | | |
| | UR.1428 | Bolt, "U," 1100 lbs. spring | 1 | | | | |
| | | (L.C. Cars with Colonial springs) | | | | | |

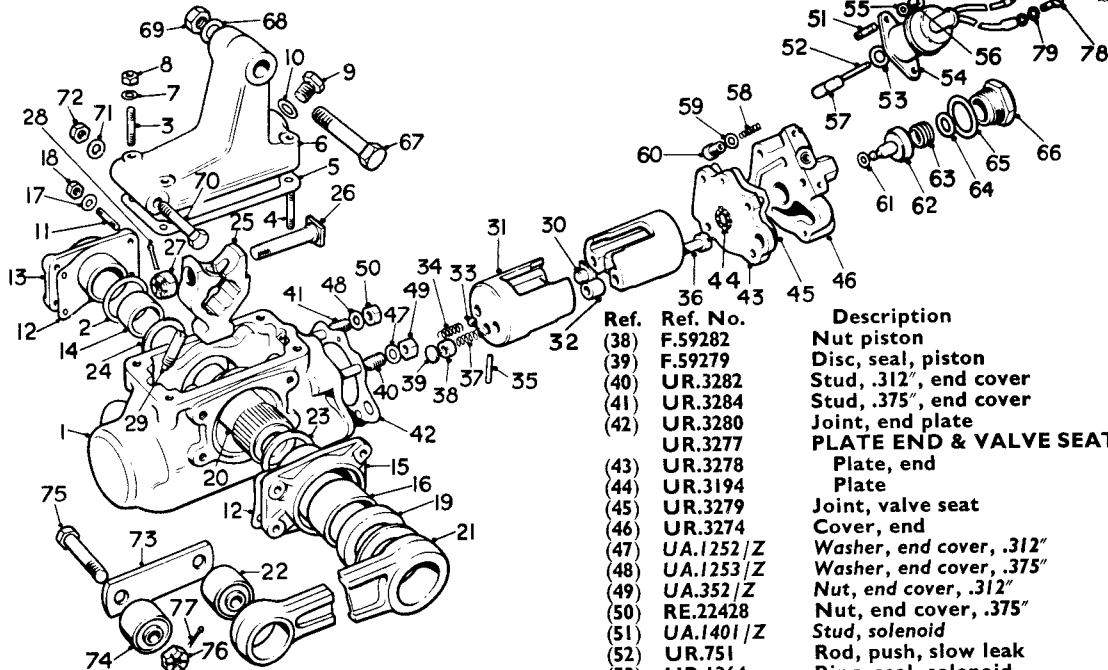
REAR SPRING

("Continental" chassis only)



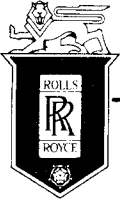
SPARES schedule

SILVER CLOUD AND BENTLEY 'S' TYPE



| Ref. | Ref. No. | Description | No off | Ref. | Ref. No. | Description | No off |
|------|-----------|-------------------------------------|----------|---------|---|---------------------------------------|--------|
| | | DAMPER, SHOCK, L.H. ASSY. | 1 | (38) | F.59282 | Nut piston | 2 |
| (1) | UR.4075 | Body | 1 | (39) | F.59279 | Disc, seal, piston | 2 |
| (2) | UR.3273 | Ring, sealing, bearing housing | 1 | (40) | UR.3282 | Stud, .312", end cover | 1 |
| (3) | UA.908/Z | Stud, 2.00", mounting bracket | 2 | (41) | UR.3284 | Stud, .375", end cover | 3 |
| (4) | UA.909/Z | Stud, 2.125", mounting bracket | 2 | (42) | UR.3280 | Joint, end plate | 1 |
| (5) | UR.1194 | Joint, mounting bracket | 1 | UR.3277 | PLATE END & VALVE SEAT, ASS. | 1 | |
| (6) | UR.2785 | Bracket, mounting | 1 | (43) | UR.3278 | Plate, end | 1 |
| (7) | UA.1252/Z | Washer, bracket | 4 | (44) | UR.3194 | Plate | 1 |
| (8) | UA.302/Z | Nut, bracket | 4 | (45) | UR.3279 | Joint, valve seat | 1 |
| (9) | UR.270 | Plug, filler, bracket | 1 | (46) | UR.3274 | Cover, end | 1 |
| (10) | KB.1079 | Washer, plug | 1 | (47) | UA.1252/Z | Washer, end cover, .312" | 1 |
| (11) | UA.852/Z | Stud, bearing housing | 8 | (48) | UA.1253/Z | Washer, end cover, .375" | 3 |
| (12) | RF.8796 | Joint, bearing housing | 2 | (49) | UA.352/Z | Nut, end cover, .312" | 1 |
| | UR.498 | BEARING & HOUSING ASSY. | 1 | (50) | RE.22428 | Nut, end cover, .375" | 3 |
| (13) | UR.499 | Housing | 1 | (51) | UA.1401/Z | Stud, solenoid | 2 |
| (14) | UR.500 | Bearing | 1 | (52) | UR.751 | Rod, push, slow leak | 1 |
| | UR.3751 | BEARING & HOUSING ASSY. | 1 | (53) | UR.1364 | Ring, seal, solenoid | 1 |
| (15) | UR.3275 | Housing | 1 | (54) | UR.1457 | SOLENOID, ASSEMBLY | 1 |
| (16) | RF.7655 | Bearing | 1 | (55) | K.4404 | Washer, solenoid | 2 |
| (17) | UA.1251/Z | Washer, bearing housing | 8 | (56) | K.4307/Z | Nut, solenoid | 2 |
| (18) | UA.351/Z | Nut, bearing housing | 8 | (57) | UR.752 | Valve, slow leak, .050" anular groove | 1 |
| (19) | RF.7793 | Gland, operating lever | 1 | UR.2257 | " " " .060" " " " | " | |
| | UR.3992 | LEVER AND SHAFT ASSY. | 1 | UR.2258 | " " " .070" " " " | " | |
| (20) | UR.505 | Shaft, rocking | 1 | UR.2761 | " " " .080" " " " | " | |
| (21) | UR.400 | Lever | 1 | UR.2762 | " " " .090" " " " | " | |
| (22) | UR.3673 | Bush, "Silentbloc" | 1 | (58) | UR.748 | Spring, valve, slow leak | 1 |
| (23) | RF.7775 | Washer, 1.2815" dia. - shaft, .098" | 1 | (59) | KB.1077 | Washer, adjust, valve plug, .028" | 1 |
| | RF.7776 | " 1.2815" dia. " .100" | As reqd. | UR.2804 | " " " " .030" | " | |
| | RF.7777 | " 1.2815" dia. " .102" | reqd. | UR.2803 | " " " " .048" | As reqd. | |
| | RF.7778 | " 1.2815" dia. " .104" | " | UR.2802 | " " " " .064" | " | |
| (24) | RF.7771 | " 1.00" dia. " .098" | " | UR.2801 | " " " " .080" | " | |
| | RF.7772 | " 1.00" dia. " .100" | As reqd. | UR.2800 | " " " " .092" | " | |
| | RF.7773 | " 1.00" dia. " .102" | reqd. | (60) | UR.750 | Plug, slow leak valve | 1 |
| | RF.7774 | " 1.00" dia. " .104" | " | (61) | UR.2612 | Washer, adjust. valves, .030" | 1 |
| (25) | F.85054 | Lever, piston | 1 | F.85595 | " " " .035" | " | |
| (26) | UR.690 | Bolt, lever | 1 | F.85596 | " " " .040" | As reqd. | |
| (27) | UR.282 | Nut, bolt | 1 | F.85597 | " " " .045" | " | |
| (28) | K.4608/Z | Pin, split, bolt | 1 | F.85598 | " " " .050" | " | |
| (29) | UR.828 | Jet, slow leak | 2 | F.85599 | " " " .055" | " | |
| | RF.7577 | PISTON AND PAD ASSY. | 2 | (62) | UR.740 | Valve, high and low pressure | 1 |
| (30) | RF.7579 | Pad | 2 | (63) | RF.7578 | Spring, valve | 1 |
| (31) | RF.7563 | Piston | 2 | (64) | UR.2871 | Washer, adjust., valve spg., .021" | 1 |
| (32) | RF.8568 | Piece, distance, piston | 2 | UR.741 | " " " " .053" | " | |
| (33) | RF.3176 | Ball, piston valve | 2 | UR.742 | " " " " .056" | " | |
| (34) | UR.2169 | Spring, valve, piston | 2 | UR.743 | " " " " .059" | As reqd. | |
| (35) | K.4801 | Pin, taper, spring | 2 | UR.744 | " " " " .062" | " | |
| (36) | F.59285 | Bolt, piston | 2 | UR.745 | " " " " .065" | " | |
| (37) | F.59278 | Spring, piston | 2 | UR.746 | " " " " .068" | " | |
| | | | | UR.747 | " " " " .071" | " | |
| | | | | (65) | KB.1092 | Washer, joint, valve plug | 1 |
| | | | | (66) | UR.749 | Plug, valve | 1 |
| | | | | (67) | UR.4073 | Bolt, .500", mounting bracket | 2 |
| | | | | (68) | UA.1255/Z | Washer, .500" bolt | 2 |
| | | | | (69) | UA.305/Z | Nut, .500" bolt | 2 |
| | | | | (70) | UR.4055 | Bolt, .375", mounting bracket | 2 |
| | | | | (71) | UA.1253/Z | Washer, .375" bolt | 2 |
| | | | | (72) | RE.22428 | Nut, .375" bolt | 2 |
| | | | | (73) | UR.3767 | Link, lever to axle | 4 |
| | | | | (74) | UR.3673 | Bush, "Silentbloc," axle tube | 2 |
| | | | | (75) | UR.3674 | Bolt, link | 4 |
| | | | | (76) | UA.1104/Z | Nut, bolt | 4 |
| | | | | (77) | KB.6860 | Pin, split, bolt | 4 |
| | | | | (78) | K.1801/Z | Screw, solenoid earth | 2 |
| | | | | (79) | K.4446/Z | Washer, screw | 2 |
| | | | | UR.4074 | DAMPER, SHOCK, R.H., ASSY. | 1 | |
| | | | | | As above except :- | | |
| | | | | UR.3991 | LEVER AND SHAFT ASSY. | 1 | |

REAR SHOCK DAMPER

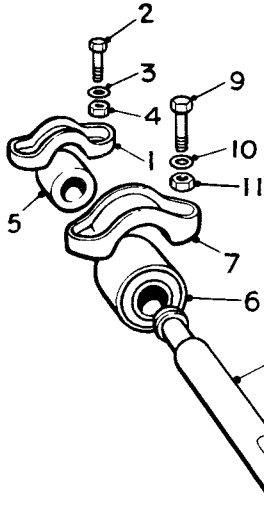


SPARES schedule

SILVER CLOUD AND BENTLEY 'S' TYPE

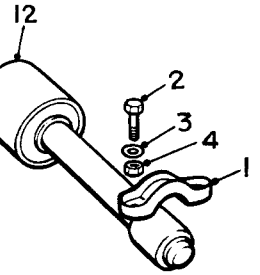


| Ref. | Part No. | Description | No off |
|------|-----------|-------------------------------|--------|
| (1) | UR.1142 | Cap, "Harris flex" bush | 2 |
| (2) | UA.152/Z | Bolt, cap | 4 |
| (3) | UA.1252/Z | Washer, bolt | 4 |
| (4) | UA.302/Z | Nut, bolt | 4 |
| (5) | UR.1190 | Bush, "Harrisflex" | 2 |
| (6) | UR.1191 | Bush, "Silentbloc" 1.812" O/D | 1 |
| (7) | UR.2533 | Clamp, anti-roll bar | 1 |
| (8) | UR.2295 | Rod, anti-roll | 1 |
| (9) | UA.152/Z | Bolt, clamp | 2 |
| (10) | UA.1252/Z | Washer, bolt | 2 |
| (11) | UA.302/Z | Nut, bolt | 2 |
| (12) | UR.2896 | Bush "Silentbloc," 2.062" O/D | 1 |

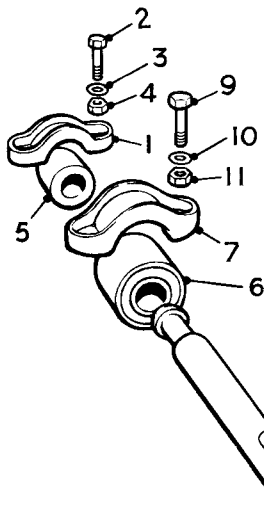


ANTI-ROLL BAR

(All chassis except "Continental")



| Ref. | Part No. | Description | No off |
|------|-----------|--------------------------------|--------|
| (1) | UR.1142 | Cap, "Harrisflex" bush | 1 |
| (2) | UA.152/Z | Bolt, cap | 2 |
| (3) | UA.1252/Z | Washer, bolt | 2 |
| (4) | UA.302/Z | Nut, bolt | 2 |
| (5) | UR.1190 | Bush, "Harrisflex" | 1 |
| (6) | UR.1191 | Bush, "Silentbloc," 1.812" O/D | 1 |
| (7) | UR.2533 | Clamp, anti-roll bar | 1 |
| (8) | UR.3474 | Rod, anti-roll | 1 |
| (9) | UA.152/Z | Bolt, clamp | 2 |
| (10) | UA.1252/Z | Washer, bolt | 2 |
| (11) | UA.302/Z | Nut, bolt | 2 |
| (12) | UR.2896 | Bush, "Silentbloc," 2.062" O/D | 2 |



ANTI-ROLL BAR

("Continental" chassis only)

