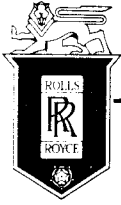


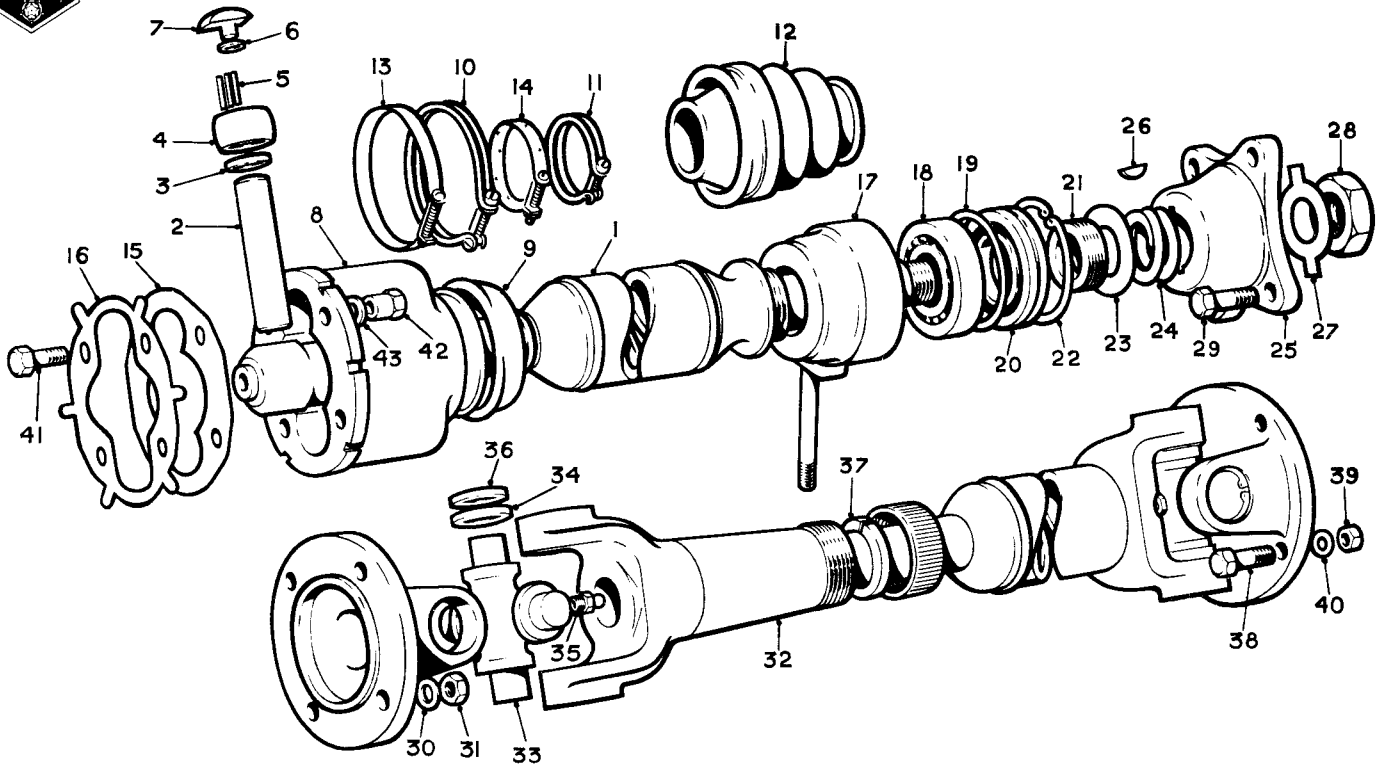
SECTION E
PROPELLER SHAFT

Title	Assembly	Page No.
PROPELLER SHAFT	EARLY TYPE	E. 1
	LATER TYPE	E. 2
	L.W.B. CARS	E. 3
CENTRE BEARING SUPPORT		E. 4



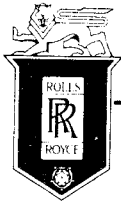
SPARES schedule

SILVER CLOUD AND BENTLEY 'S' TYPE



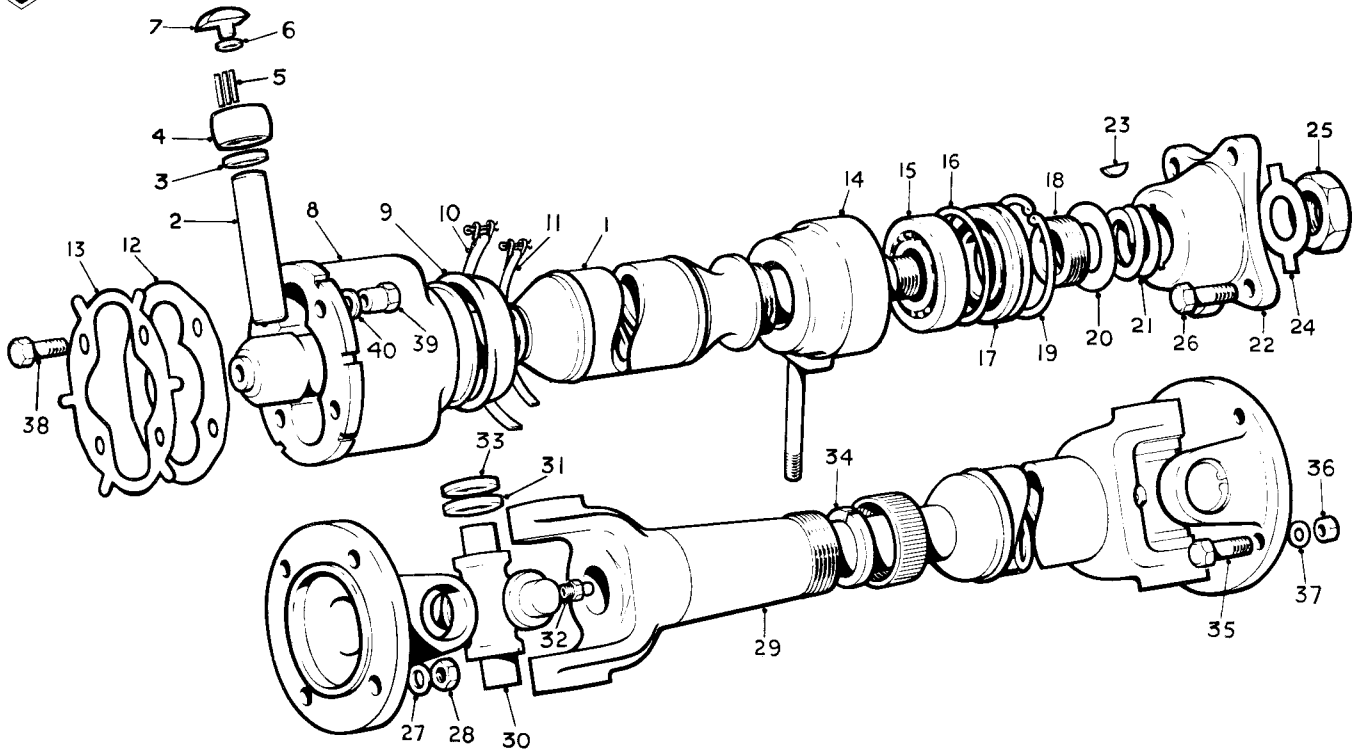
Ref.	Part No.	Description	No off	Ref.	Part No.	Description	No off
	UG.3001	PROPELLER SHAFT ASSY. COM. (Standard & Continental Cars)	1	(17)	UG.1248	HOUSING, BEARING	1
	UG.2999	PROPELLER SHAFT, FRONT, ASS.	1		UA.966/Z	Stud	1
(1)	UG.2998	SHAFT, FRONT	1	(18)	RG.4454	Bearing	1
	UG.2996	Knuckle end piece	1		RG.6589	Bearing	1 Alt.
(2)	UG.1633	Pin, ball and trunnion joint	1		RG.7084	Bearing	1
(3)	UG.1625	Washer, thrust	2	(19)	KB.6230	Ring, sealing, bearing	1
(4)	UG.3020	Race, outer	2	(20)	UG.978	Retainer, seal	1
(5)	UG.614	Roller, needle	62	(21)	UG.975	Retainer, oil	1
(6)	UG.3006	Washer, shim, .012"	As reqd.	(22)	KB.14056	Circlip	1
	UG.3007	" " .013"		(23)	UG.974	Washer, centre, bearing	1
	UG.3008	" " .014"		(24)	UG.315	Spring	1
	UG.3009	" " .015"		(25)	UG.3539	Flange	1
	UG.3010	" " .016"		(26)	KC.515/8	Key "Woodruff"	1
	UG.3011	" " .017"		(27)	KB.7118	Washer, tab	1
	UG.3012	" " .018"		(28)	UG.2288	Nut	1
	UG.3013	" " .019"		(29)	UG.321	Bolt, coupling, shafts	4
	UG.3014	" " .020"		(30)	UA.1254	Washer, bolt	4
	UG.3015	" " .021"		(31)	UA.304/Z	Nut, bolt	4
	UG.3016	" " .022"	(32)	UG.312	SHAFT, REAR	1	
	UG.3017	" " .023"	(33)	RG.6389	Journal	1	
(7)	UG.3019	Button, centreing	2	(34)	RG.7064	Retainer, cork washer	4
(8)	UG.1630	Body, ball joint	1	(35)	RG.6940	Nipple, grease	1
(9)	UG.3543	Seal, rubber	1 "A"	(36)	RG.7062	Washer, grease retaining journal	4
(10)	UG.3522	Clip, seal	1 Alt. to	(37)	CD.1000	Washer, grease retaining, sliding piece	1
(11)	UG.3523	Clip, seal	1 "B"	(38)	UG.321	Bolt, coupling, flange	4
(12)	UG.3162	Seal, rubber	1 "B"	(39)	UA.304/Z	Nut, bolt	4
(13)	UG.3522	Clip, seal	1 Alt. to	(40)	UA.1254/Z	Washer, bolt	4
(14)	UG.1654	Clip, seal	1 "A"	(41)	UG.1978	Bolt, output shaft to prop. shaft	4
(15)	UG.1626	Gasket, body	1	(43)	UG.2697	Nut, bolt	4
(16)	UG.1622	Cover, end, body	1	(43)	UG.2712	Washer, bolt	4

PROPELLER SHAFT



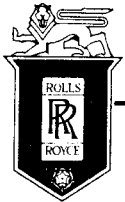
SPARES schedule

SILVER CLOUD AND BENTLEY 'S' TYPE



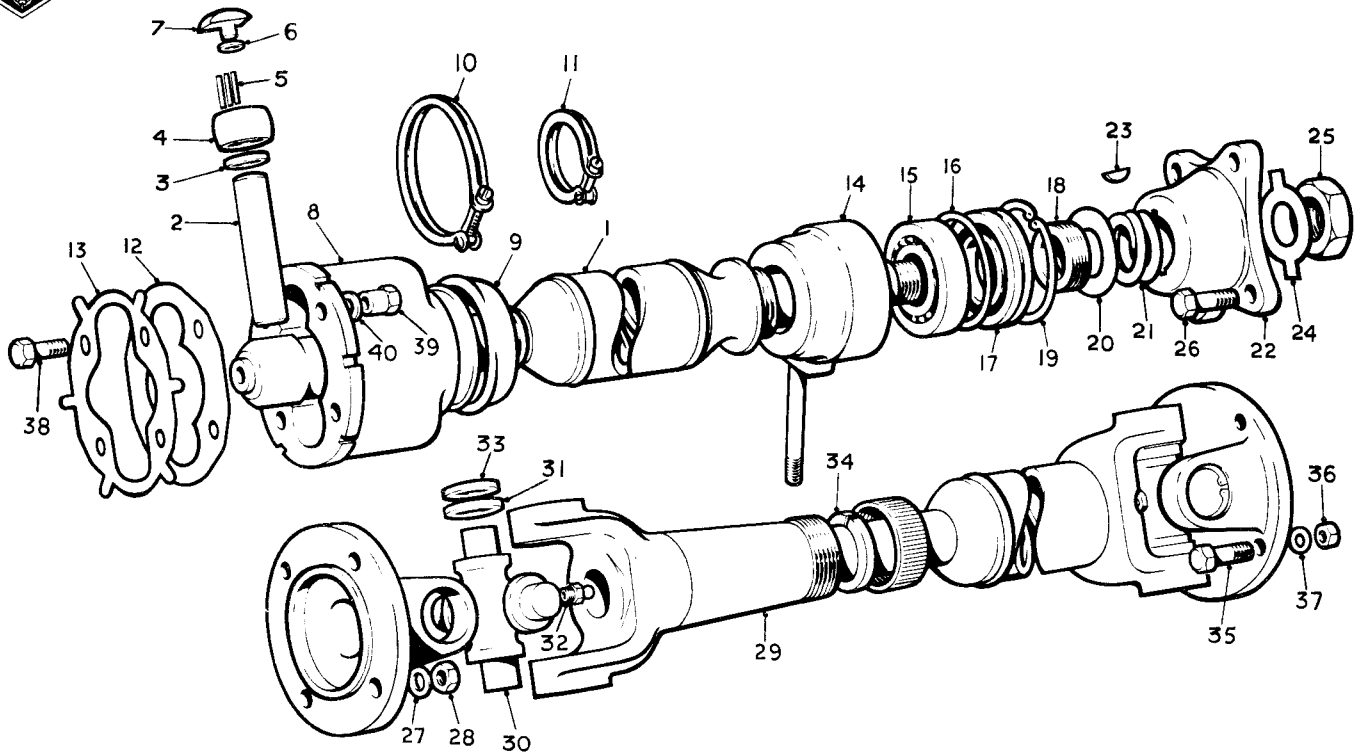
Ref.	Part No.	Description	No off	Ref.	Part No.	Description	No off
	UG.3558	PROPELLER SHAFT ASSY. COM.	1	(15)	RG.4454	Bearing	1
		(Standard & Continental Cars)			RG.6589	Bearing	1 Alt.
	UG.3557	PROPELLER SHAFT, FRONT, ASS.	1		RG.7084	Bearing	1
(1)	UG.2998	SHAFT, FRONT	1	(16)	KB.6230	Ring, sealing, bearing	1
	UG.3552	Knuckle end piece	1	(17)	UG.978	Retainer, seal	1
(2)	UG.1633	Pin, ball and trunnion joint	1	(18)	UG.975	Retainer, oil	1
(3)	UG.1625	Washer, thrust	2	(19)	KB.14059	Circlip	1
(4)	UG.3020	Race, outer	2	(20)	UG.974	Washer, centre, bearing	1
(5)	UG.614	Roller, needle	62	(21)	UG.315	Spring	1
(6)	UG.3006	Washer, shim, .012"	As reqd.	(22)	UG.3539	Flange	1
	UG.3007	" " .013"		(23)	KC.515/8	Key "Woodruff"	1
	UG.3008	" " .014"		(24)	KB.7118	Washer, tab	1
	UG.3009	" " .015"		(25)	UG.2288	Nut	1
	UG.3010	" " .016"		(26)	UG.321	Bolt, coupling, shafts	4
	UG.3011	" " .017"		(27)	UA.1254	Washer, bolt	4
	UG.3012	" " .018"		(28)	UA.304/Z	Nut, bolt	4
	UG.3013	" " .019"		(29)	UG.312	SHAFT, REAR	1
	UG.3014	" " .020"		(30)	RG.6389	Journal	1
	UG.3015	" " .021"		(31)	RG.7064	Retainer, cork washer	4
	UG.3016	" " .022"	(32)	RG.6940	Nipple, grease	1	
	UG.3017	" " .023"	(33)	RG.7062	Washer, grease retaining journal	4	
(7)	UG.3019	Button, centreing	2	(34)	CD.1000	Washer, grease retaining, sliding piece	1
(8)	UG.1630	Body, ball joint	1	(35)	UG.321	Bolt, coupling, flange	4
(9)	UG.3553	Seal, rubber	1	(36)	UA.304/Z	Nut, bolt	4
(10)	UG.3554	Clip, seal	1	(37)	UA.1254/Z	Washer, bolt	4
(11)	UG.3555	Clip, seal	1	(38)	UG.1978	Bolt, output shaft to prop. shaft	4
(12)	UG.1626	Gasket, body	1	(39)	UG.2697	Nut, bolt	4
(13)	UG.1622	Cover, end, body	1	(40)	UG.2712	Washer, bolt	4
(14)	UG.1248	HOUSING, BEARING	1				
	UA.966 Z	Stud	1				

PROPELLER SHAFT



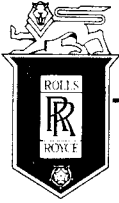
SPARES schedule

SILVER CLOUD AND BENTLEY 'S' TYPE



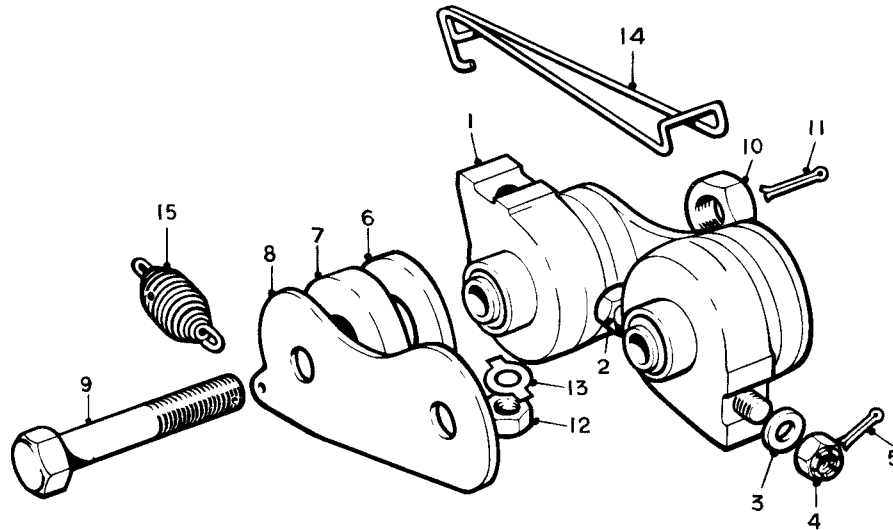
Ref.	Part No.	Description	No off	Ref.	Part No.	Description	No off
	UG.3167	PROPELLER SHAFT ASSY. COM.	1	(15)	RG.4454	Bearing	1
	UG.2999	PROPELLER SHAFT, FRONT, ASS.	1		RG.6589	Bearing	1 Alt.
					RG.7084	Bearing	1
(1)	UG.2998	SHAFT, FRONT	1	(16)	KB.6230	Ring, sealing, bearing	1
	UG.2996	Knuckle end piece	1	(17)	UG.978	Retainer, seal	1
(2)	UG.1633	Pin, ball and trunnion joint	1	(18)	UG.975	Retainer, oil	1
(3)	UG.1625	Washer, thrust	2	(19)	KB.14059	Circlip	1
(4)	UG.3020	Race, outer	2	(20)	UG.974	Washer, centre, bearing	1
(5)	UG.614	Roller, needle	62	(21)	UG.315	Spring	1
(6)	UG.3006	Washer, shim, .012"	6 As reqd.	(22)	UG.3539	Flange	1
	UG.3007	" " .013"		(23)	KC.515/8	Key "Woodruff"	1
	UG.3008	" " .014"		(24)	KB.7118	Washer, tab	1
	UG.3009	" " .015"		(25)	UG.2288	Nut	1
	UG.3010	" " .016"		(26)	UG.321	Bolt, coupling, shafts	4
	UG.3011	" " .017"		(27)	UA.1254	Washer, bolt	4
	UG.3012	" " .018"		(28)	UA.304/Z	Nut, bolt	4
	UG.3013	" " .019"		(29)	UG.2965	SHAFT, REAR	1
	UG.3014	" " .020"	(30)	RG.6389	Journal	1	
	UG.3015	" " .021"	(31)	RG.7064	Retainer, cork washer	4	
	UG.3016	" " .022"	(32)	RG.6940	Nipple, grease	1	
	UG.3017	" " .023"	(33)	RG.7062	Washer, grease retaining journal	4	
(7)	UG.3019	Button, centring	2	(34)	CD.1000	Washer, grease retaining, sliding piece	1
(8)	UG.1630	Body, ball joint	1	(35)	UG.321	Bolt, coupling, flange	4
(9)	UG.3543	Seal, rubber	1	(36)	UA.304/Z	Nut, bolt	4
(10)	UG.3522	Clip, seal	1	(37)	UA.1254/Z	Washer, bolt	4
(11)	UG.3523	Clip, seal	1	(38)	UG.1978	Bolt, output shaft to prop. shaft	4
(12)	UG.1626	Gasket, body	1	(39)	UG.2697	Nut, bolt	4
(13)	UG.1622	Cover, end, body	1	(40)	UG.2712	Washer, bolt	4
(14)	UG.1248	HOUSING, BEARING	1				
	UA.966 Z	Stud	1				

PROPELLER SHAFT



SPARES schedule

SILVER CLOUD AND BENTLEY 'S' TYPE



Ref.	Part No.	Description	No off
(1)	UG.1250	HOUSING, SILENTBLOC BEARING 2	
	RG.3076	Bush, " Silentbloc "	1
(2)	UG.1323	Bolt, housing to frame	1
(3)	RB.2943	Washer, bolt	1
(4)	RE.22436	Nut, castle, bolt	1
(5)	K.4603/Z	Split pin nut	1
(6)	RG.3466	Friction disc	4
(7)	RG.3465	Washer, compression	4
(8)	UG.1252	Plate, connecting, centre bearing	2
(9)	UG.318	Bolt, connecting plates	2
(10)	UA.405/Z	Nut, bolt	2
(11)	K.4608/Z	Split pin, nut	2
(12)	RE.22428	Nut, stud, bearing housing	1
(13)	KB.7108/R	Washer, tab nut	1
(14)	UG.1444	Link, spring	1
(15)	RE.17032	Spring	2

PROPELLER SHAFT CENTRE BEARING SUPPORT