

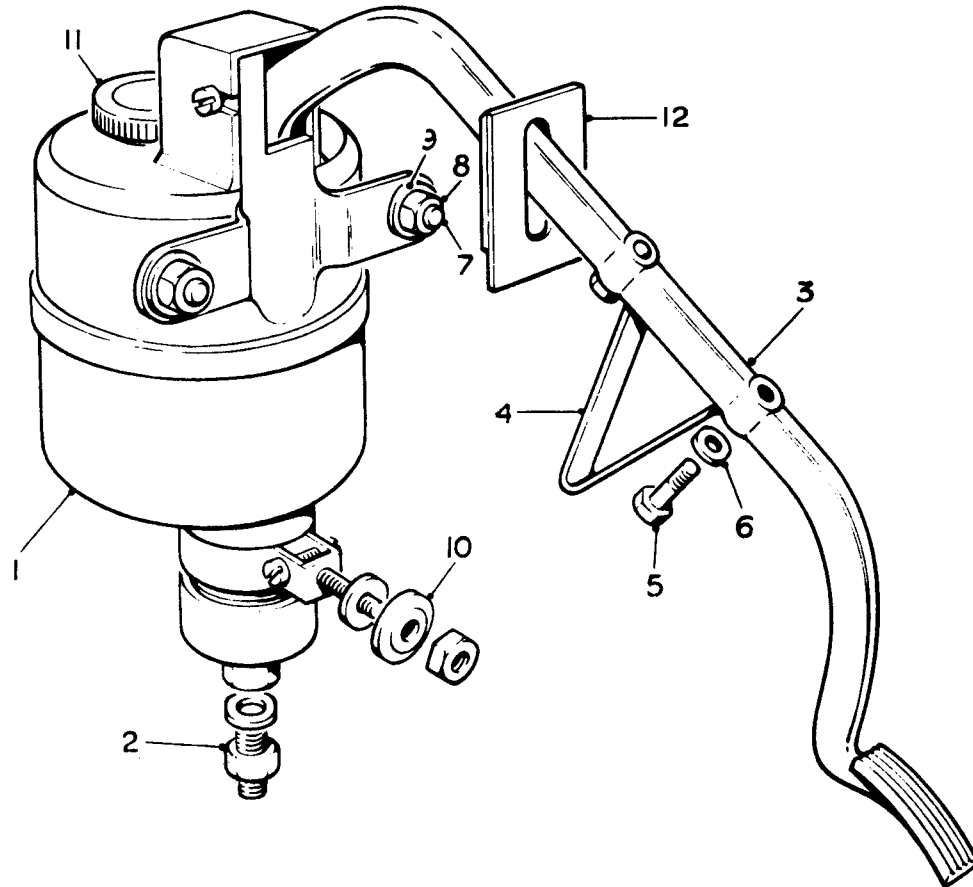
**SECTION B**  
**LUBRICATION**

<b>Title</b>	<b>Assembly</b>	<b>Page No.</b>
CHASSIS LUBRICATION PUMP		B. 1
ENGINE OIL FILTER AND PIPES		B. 2
CHASSIS LUBRICATION PIPES	EARLY CARS	B. 3
	LATER CARS	B. 4



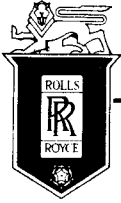
# SPARES schedule

SILVER CLOUD AND BENTLEY 'S' TYPE



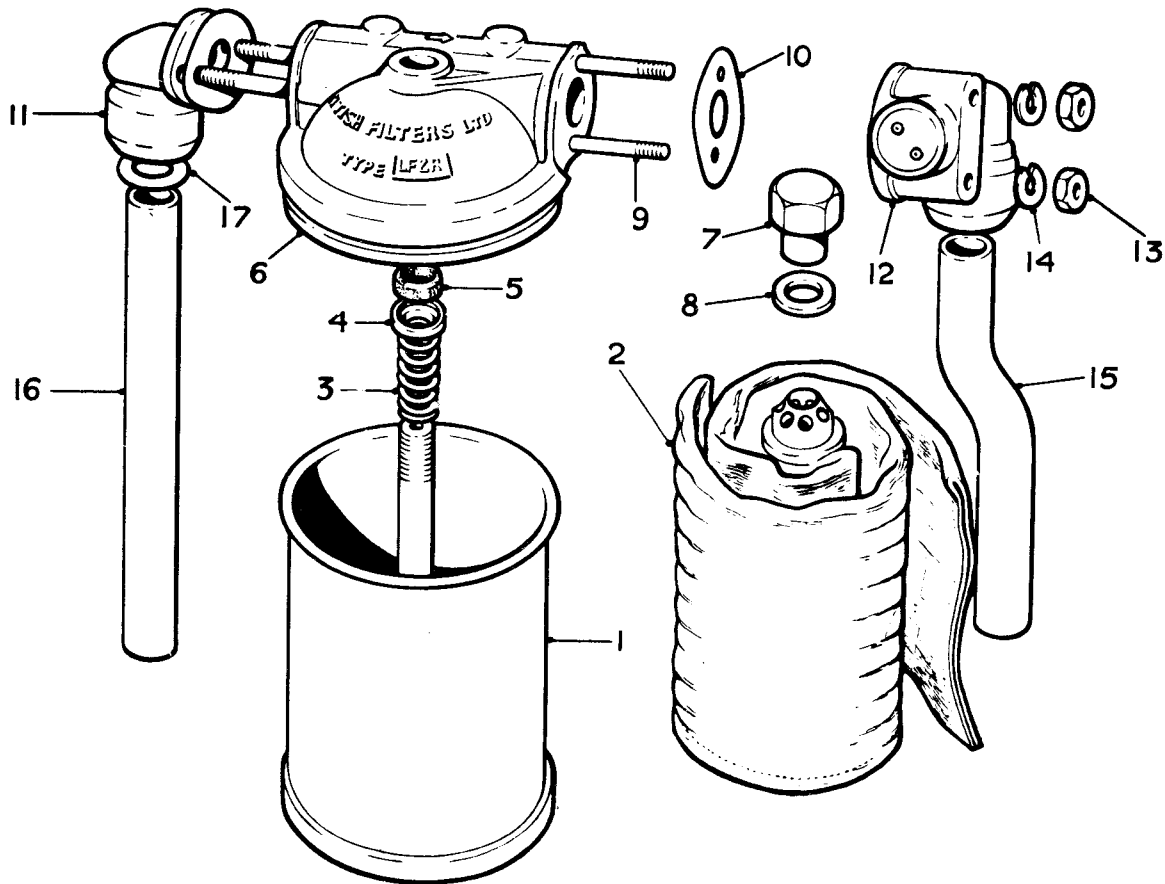
Ref.	Part No.	Description	No off
(1)	UR.886	<b>PUMP ASSEMBLY</b>	1 - Standard cars
	UR.2222	<b>PUMP ASSEMBLY</b>	1 - Coachbuilt cars
	R.3992	Filter, felt	1
(2)	UR.2046	Connection assembly	1
(3)	UR.885	Lever, operating	1 - Standard cars.
	UR.2221	Lever, operating	1 - Coachbuilt cars
	RF.8201	Washer, cap, plunger	1
(4)	UR.599	Stop, lever	1
(5)	UA.104/Z	Bolt, stop	2
(6)	UA.1251/Z	Washer, bolt	2
(7)	UA.153/Z	Bolt, upper	2
(8)	UA.302/Z	Nut, bolts	3
(9)	K.4410/Z	Washer, bolts	3
(10)	KB.3906/Z	Washer, heavy, bolts	3
(11)	CD.619	Cap, filler	1
(12)	RF.3536	Seal, pump to dash	1
	UR.2711	Grommet, stop	1
	UR.1005	Grommet, access nuts	1

## CHASSIS LUBRICATION PUMP.



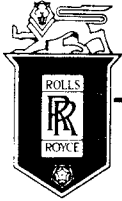
# SPARES schedule

SILVER CLOUD AND BENTLEY 'S' TYPE



Ref.	Part No.	Description	No. off	Ref.	Part No.	Description	No. off
	<b>UE.651</b>	<b>FILTER, FULL FLOW, ASSY.</b>	1		<b>K.9009/Z</b>	<b>Washer, stud</b>	2
(1)	CD.309	Casing assembly	1		UA.302/Z	Nut, stud	2
(2)	UE.807	Element, assembly	1	(15)	UE.435	Pipe, outlet, oil filter	1
(3)	CD.308	Spring, element	1	(16)	UE.436	Pipe, inlet, oil filter	1
(4)	CD.256	Cup, spring	1	(17)	KB.6205	Sealing ring, pipes	4
(5)	CD.255	Gasket, conical	1		<b>UE.301</b>	<b>LOW PRESSURE PIPE ASSY.</b>	1
(6)	CD.311	Head, assembly	1		RE.3641	"T" Connection	1
	RE.21265	Gasket	1		RE.3519	Banjo connection	1
	CD.312	Head	1		RE.6419	Nipple relief valve	1
	CD.315	Nut, valve	1		RE.6239	Nipple, wheelcase	1
	UA.864/Z	Studs	4		RE.6420	Nut, union, relief valve	1
	CD.314	Relief valve	1		RE.6234	Nut, union, wheelcase	1
(7)	CD.252	Closing nut	1		UE.303	Pipe, c/block to "T" piece	1
(8)	CD.253	Washer, nut	1		UE.302	Pipe, "T" piece to relief valve	1
(9)	UA.859/Z	Stud, oil pipe connections	4		UE.304	Pipe, "T" piece to wheelcase	1
(10)	UE.438	Gasket, connections	4		UE.2664	Pipe, oil feed to tachometer	1
(11)	UE.432	Connection, inlet	1			(Cars without cylinder head heater tap)	
(12)	UE.440	Connection, outlet	1		UE.3443	Pipe, oil feed to tachometer	1
	UA.552/R	Plug, outlet connection	1			(Cars with cylinder head heater tap)	
	KB.1091/R	Washer, plug	1		RE.16881	Clip, pipe	1
(13)	UA.301/Z	Nut, connections	4		RE.16880	Bush, clip	1
(14)	K.9008/Z	Washer, nut	4		RF.6786	Nut, pipe	2
	UA.902/Z	Stud, filter to bracket	2		RF.6783	Sleeve, compression	2

## ENGINE OIL FILTER AND PIPES.



# SPARES schedule

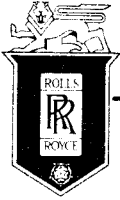
SILVER CLOUD AND BENTLEY 'S' TYPE



Part No.	Description	No off	Part No.	Description	No off
UR.1747	Pipe, pump to junctions on side member	1	UR.2541	Bush, threaded	4
UR.2541	Bush, threaded	1	RF.6783	Sleeve, compression	4
RF.6783	Sleeve, compression	2	UR.973	Junction, 2 way, damper	2
UR.2647	Nut	2	UA.301/Z	Nut, junction	2
UR.2779	Junction, three way	1	UA.1251/Z	Washer, nut	2
	(R.C. cars)		UR.2541	Bush, threaded	2
UR.2778	Junction, two way	1	UR.2647	Nut	2
	(L.C. cars)		RF.6783	Sleeve, compression	4
UA.301/Z	Nut, junction	1	UR.968	Pipe, flexible to yoke	2
UA.1251/Z	Washer, .250", junction	1	UR.2541	Bush, threaded	2
UA.1253/Z	Washer, .375", junction	1	RF.6783	Sleeve, compression	2
UR.3348	Pipe, 3 way junction to steering box junction	1	UR.2647	Nut, pipe to elbow	2
	(R.C. P/assisted steering)		UR.3105	Pipe, 5 way junction to L.H. steering pivot	1
UR.2541	Bush, threaded	2	UR.3106	Pipe, 5 way junction to R.H. steering pivot	1
RF.6783	Sleeve compression	2	UR.2541	Bush, threaded	1
UR.1735	Pipe, 3 way junction to steering box junction	1	RF.6783	Sleeve, compression	2
	(R.C. Manual steering)		UR.2647	Nut, pipe to elbow	1
UR.2541	Bush, threaded	2	UR.1742	Pipe, connecting 5 way junctions	1
RF.6783	Sleeve, compression	2	UR.2541	Bush, threaded	2
UR.3349	Pipe, 5 way junction to steering box junction	1	RF.6783	Sleeve, compression	2
	(L.C. P/assisted steering)		UR.2828	Pipe, R.H. junction to fulcrum	1
UR.2541	Bush, threaded	2	UR.2827	Pipe, L.H. junction to fulcrum	1
RF.6783	Sleeve, compression	2	UR.2541	Bush, threaded	2
UR.1745	Pipe, 5 way junction to steering box junction	1	RF.6783	Sleeve, compression	4
	(L.C. Manual steering)		UR.2647	Nut	2
UR.2541	Bush, threaded	2	UR.2266	Meter valve, straight	2
RF.6783	Sleeve, compression	2	UR.2895	Junction, 4 way	1
UR.1745	Pipe, 5 way junction to steering box junction	1	UR.2894	Pipe, 4 way to clutch	1
	(L.C. Manual steering)			(Continental, synchro gearbox)	
UR.2541	Bush, threaded	2	UR.1667	Clip, pipes	3
RF.6783	Sleeve, compression	2		(R.C. cars)	
UR.2778	Junction, steering box	1	UR.1667	Clip, pipes	5
UR.1736	Pipe, 2 or 3 way junction to 5 way	1		(L.C. cars)	
UR.2541	Bush, threaded	2	K.4307/Z	Nut, clip	3
RF.6783	Sleeve, compression	2		(R.C. cars)	
UR.2780	Junction, 5 way	2	K.4307/Z	Nut, clip	5
UR.2272	Plug, junction	1		(L.C. cars)	
UR.2271	Washer, plug	1	K.4404/Z	Washer, nut	3
UA.301/Z	Nut, junction	4		(R.C. cars)	
UA.1251/Z	Washer, .250"	4	K.4404/Z	Washer, nut	5
UA.1253/Z	Washer, .375"	4		(L.C. cars)	
UR.1737	Pipe, 5 way junction to R.H. shock damper	1	KC.170/Z	Setscrew, pipe clip	1
UR.1738	Pipe, 5 way junction to L.H. shock damper	1			

Silver Cloud	...	SWA.2—SGE.428
Silver Cloud L.W.B.	...	ALC.1—BLC.27, 41
Bentley "S"	...	AN.2—FA.642
Bentley "S" L.W.B.	...	ALB.1—16, 18-20, 23-26
Continental	...	AF.1—EL.40

## CHASSIS LUBRICATION PIPES.



# SPARES schedule

SILVER CLOUD AND BENTLEY 'S' TYPE



Part No.	Description	No off	Part No.	Description	No off
UR.1747	Pipe, pump to junction on side member	1	UR.2541	Bush, threaded	1
UR.2541	Bush, threaded	1	RF.6783	Sleeve, compression	2
RF.6783	Sleeve, compression	2	UR.2647	Nut, pipe to elbow	1
UR.2647	Nut	1	UR.3105	Pipe, 5 way junction to L.H. steering pivot	1
UR.2778	Junction, R.H. side member	1	UR.3106	Pipe, 5 way junction to R.H. steering pivot	1
UA.301/Z	Nut, junction	1	UR.2541	Bush, threaded	1
UA.1251/Z	Washer, .250"	1	RF.6783	Sleeve, compression	2
UA.1253/Z	Washer, .375"	1	UR.2647	Nut, pipe to elbow	1
UR.2778	Junction, steering box	1	UR.1742	Pipe, connecting 5 way junctions	1
UR.1736	Pipe, 2 or 3 way junction to 5 way	1	UR.2541	Bush, threaded	2
UR.2514	Bush, threaded	2	RF.6783	Sleeve, compression	2
RF.6783	Sleeve, compression	2	UR.2828	Pipe, R.H. junction to fulcrum	1
UR.2780	Junction, 5 way	2	UR.2827	Pipe, L.H. junction to fulcrum	1
UR.2272	Plug, junction	1	UR.2541	Bush, threaded	2
UR.2271	Washer, plug	1	RF.6783	Sleeve, compression	4
UA.301/Z	Nut, junction to frame	4	UR.2647	Nut	2
UA.1251/Z	Washer, .250"	4	UR.2266	Valve, meter, straight	2
UA.1253/Z	Washer, .375"	4	UR.1667	Clip, pipes	1
UR.1737	Pipe, 5 way junction to R.H. shock damper	1	UR.1667	Clip, pipes	(R.C. cars) 3
UR.1738	Pipe, 5 way junction to L.H. shock damper	1	K.4307/Z	Nut, clip	(L.C. cars) 1
UR.2541	Bush, threaded	4	K.4404/Z	Washer, nut	(R.C. cars) 1
RF.6783	Sleeve, compression	4	K.4404/Z	Washer, nut	(R.C. cars) 3
UR.973	Junction, 2 way, damper	2	KC.170/Z	Setscrew, pipe clip	(L.C. cars) 1
UA.301/Z	Nut, junction	2	K.4307/Z	Nut, clip	3
UA.1251/Z	Washer, nut	2			(L.C. cars)
UR.2541	Bush, threaded	2			
UR.2647	Nut	2			
RF.6783	Sleeve, compression	4			
UR.968	Pipe, flexible, yoke	2			

Silver Cloud	...	SGE. 430 onwards
Silver Cloud L.W.B.	...	BLC. 28 to 40 43 onwards
Bentley "S"	...	64 FA onwards
Bentley "S" L.W.B.	...	ALB. 17 21 22 27 onwards
Continental	...	EL. 41 onwards

## CHASSIS LUBRICATION PIPES.