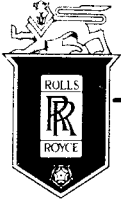


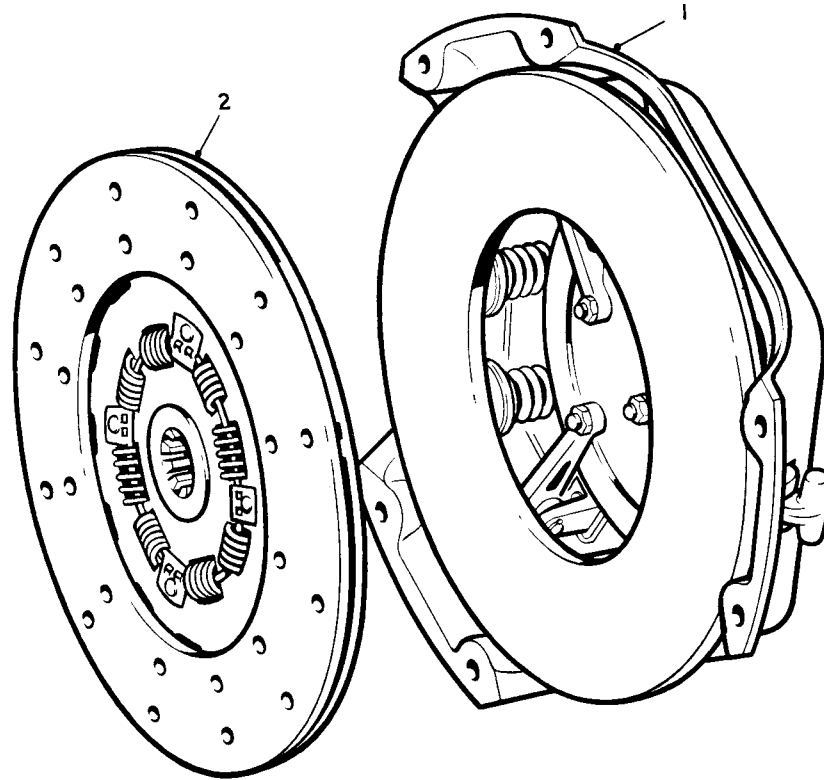
SECTION Q
CLUTCH

Title	(Synchromesh Gearbox)	Page No.
CLUTCH		Q. 1
CLUTCH CASING		Q. 2
OPERATING SHAFT AND LEVER		Q. 3
BRACKET, LEVER AND LINKAGE		Q. 4
CLUTCH PEDAL		Q. 5



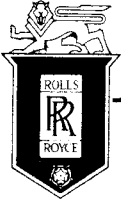
SPARES schedule

SILVER CLOUD AND BENTLEY 'S' TYPE



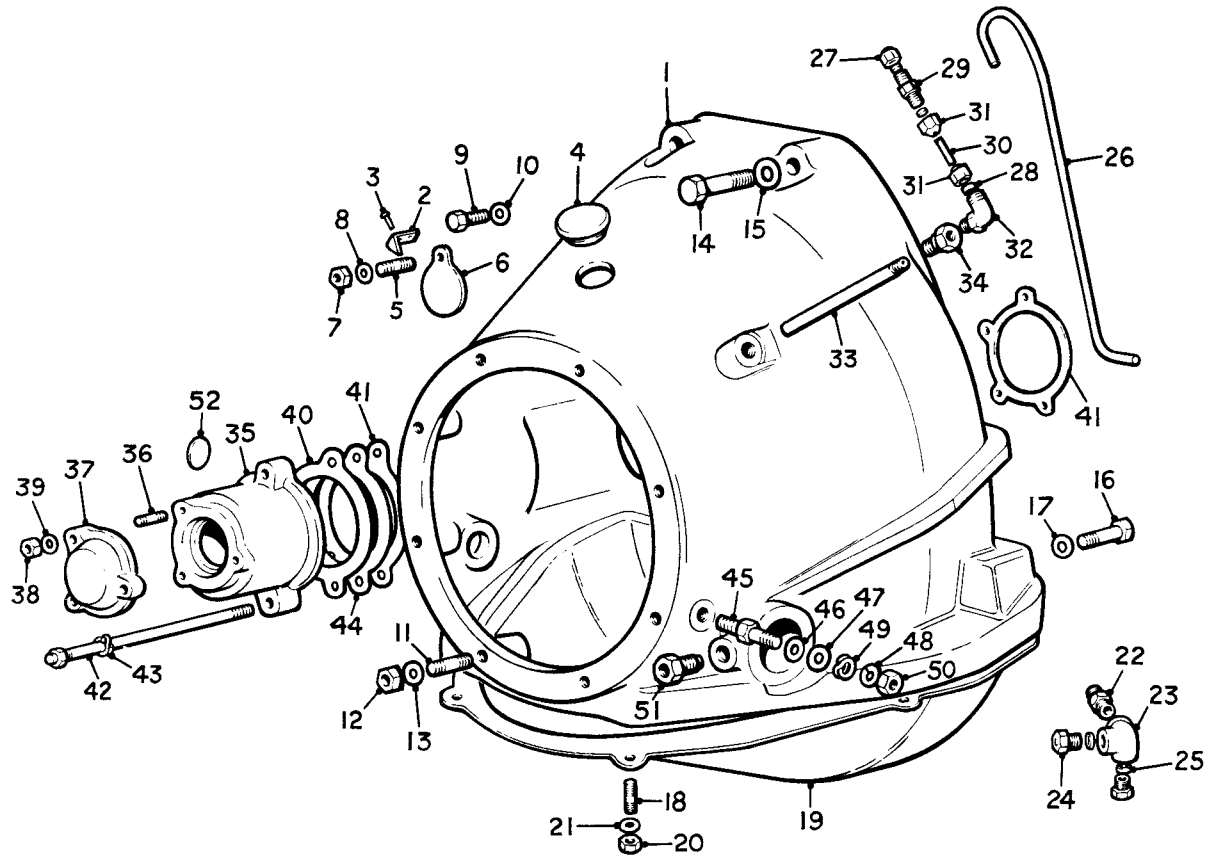
	RE.17590	CLUTCH ASSEMBLY	1
(1)	RE.17589	Cover assembly	1
(2)	RG.7072	Driven plate	1

CLUTCH



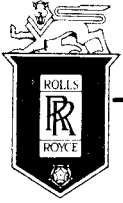
SPARES schedule

SILVER CLOUD AND BENTLEY 'S' TYPE



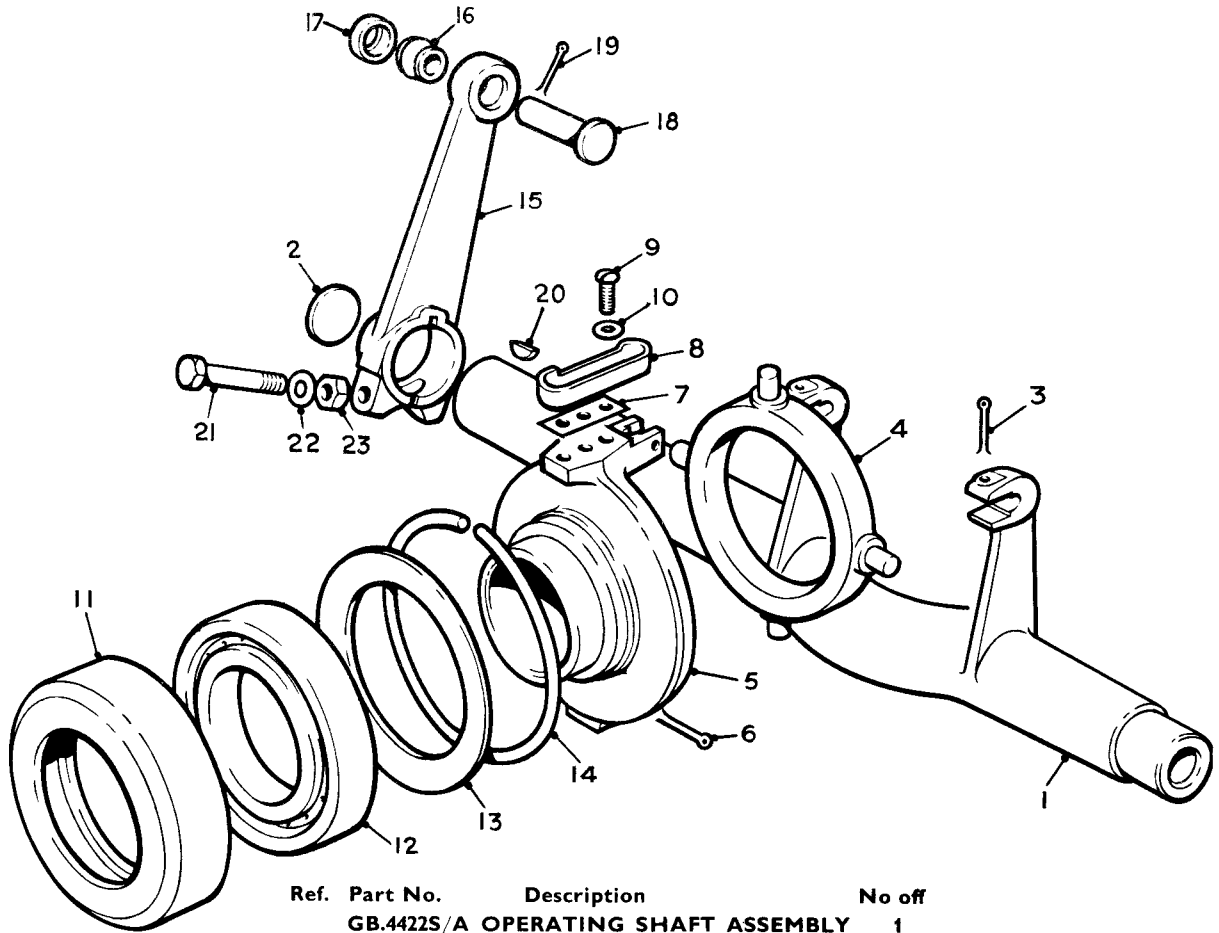
Ref.	Part No.	Description	No off	Ref.	Part No.	Description	No off
(1)	UE.1707	Casing, clutch	1	(29)	RE.11235	Valve, straight meter	1
(2)	RE.6324	Pointer, timing	1	(30)	RG.7100	Pipe, oil, trunnion elbow	1
(3)	KB.1850	Rivet, pointer	2	(31)	RF.6786	Nut, compression, pipe	1
(4)	RG.7115	Plug, rubber	1	(32)	RF.7119	Elbow, trunnion oil supply, upper	1
(5)	KB.3818/Z	Stud, timing cover	1	GB.3238S/A OIL PIPE			1
(6)	GB.4347	Cover	1	(33)	GB.3238	Pipe	1
(7)	K.4006/Z	Nut, stud	1	(34)	GB.3239	Adaptor	1
(8)	K.3803/Z	Washer, nut	1	GB.4351S/A HOUSING, STARTER			1
(9)	KC.901/Z	Screw, blanking	1	(35)	GB.4351	Housing	1
(10)	UA.1251/Z	Washer, screw	1	(36)	KB.254/Z	Stud, cover	3
(11)	KB.405/Z	Stud, clutch case to gearbox	8	(37)	GB.3315	Cover, starter, housing	1
(12)	K.4009/Z	Nut, stud	8	(38)	K.4006/Z	Nut, cover	3
(13)	K.9009/Z	Washer, stud	8	(39)	K.9006/Z	Washer, nut	3
(14)	KC.287/Z	Screw, .312", clutch to crankcase	2	(40)	RG.4443	Joint, front	1
(15)	K.9009/Z	Washer, screw	2	(41)	RG.4456	Joint, rear	1
(16)	KC.360/Z	Screw, .437", clutch to crankcase	4	(42)	RG.3231S/A	STUD ASSEMBLY	4
(17)	K.9011/Z	Washer, screw	4	(43)	K.3804/Z	Washer, stud	4
(18)	KB.3823/Z	Stud, bottom cover	6	(44)	GB.4349	Washer, adjust, starter housing, .050"	As
(19)	UE.3146	Cover, bottom	1		GB.4348	Washer, adjust, starter housing, .075" reqd.	
(20)	K.4310/Z	Nut, stud	6	(45)	GB.4760/Z	Pin, anchor, thrust stay	1
(21)	K.9008/Z	Washer, stud	6	(46)	GB.3309	Washer, adjust., stay	As reqd.
(22)	RE.10670	Connection, oil feed	1	(47)	GB.3306	Washer, anchor pin	1
(23)	RE.10672	Elbow, oil supply	1	(48)	K.9009/Z	Washer, spring, anchor pin	1
(24)	RF.6780	Bush, threaded	2	(49)	K.3808/Z	Washer, Thackeray, anchor pin	1
(25)	RF.6783	Sleeve, compression	3	(50)	K.4313/Z	Nut, anchor pin	1
(26)	RG.7101	Pipe, oil, to straight meter valve	1	(51)	GW.952	Adaptor, clutch shaft	1
(27)	UR.2647	Nut, compression, trunnion oil supply	2	(52)	RG.3250	Washer, Welch, trunnion base	1
(28)	RF.6783	Sleeve, compression	2				

CLUTCH CASING



SPARES schedule

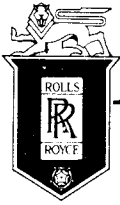
SILVER CLOUD AND BENTLEY 'S' TYPE



Ref.	Part No.	Description	No off
	GB.4422S/A	OPERATING SHAFT ASSEMBLY	1
(1)	GB.4422	Shaft	1
(2)	F.86825	Disc	1
(3)	K.4608/Z	Pin, split, shaft	2
(4)	G.83321	Ring, universal	1
(5)	GB.4084	Trunnion	1
(6)	K.4613/Z	Pin, split, trunnion	2
(7)	GB.4081	Joint, oil trough	1
(8)	GB.4082	Oil trough	1
(9)	KC.101/Z	Setscrew, oil trough	2
(10)	K.9005/Z	Washer, setscrew	2
(11)	GB.4083	Housing, trunnion bearing	1
(12)	RG.8408	Bearing, clutch release	1
	RG.8409	Bearing, clutch release	1
	RG.8410	Bearing, clutch release	1
(13)	GB.2084	Ring, oil retaining	1
(14)	GB.2085	Ring, spring, bearing	1
	GB.3619S/A	LEVER ASSEMBLY	1
(15)	GB.3619	Lever	1
(16)	GB.1451	Bearing, spherical	1
(17)	GB.1450	Bearing, spherical	1
(18)	RG.4405	Pin, bearing, lever	1
(19)	K.4643/Z	Pin, split, bearing pin	1
(20)	KC.505/8	Key, Woodruff	1
(21)	K.314/Z	Bolt, lever boss	1
(22)	K.9009/Z	Washer, bolt	1
(23)	K.4009/Z	Nut, bolt	1

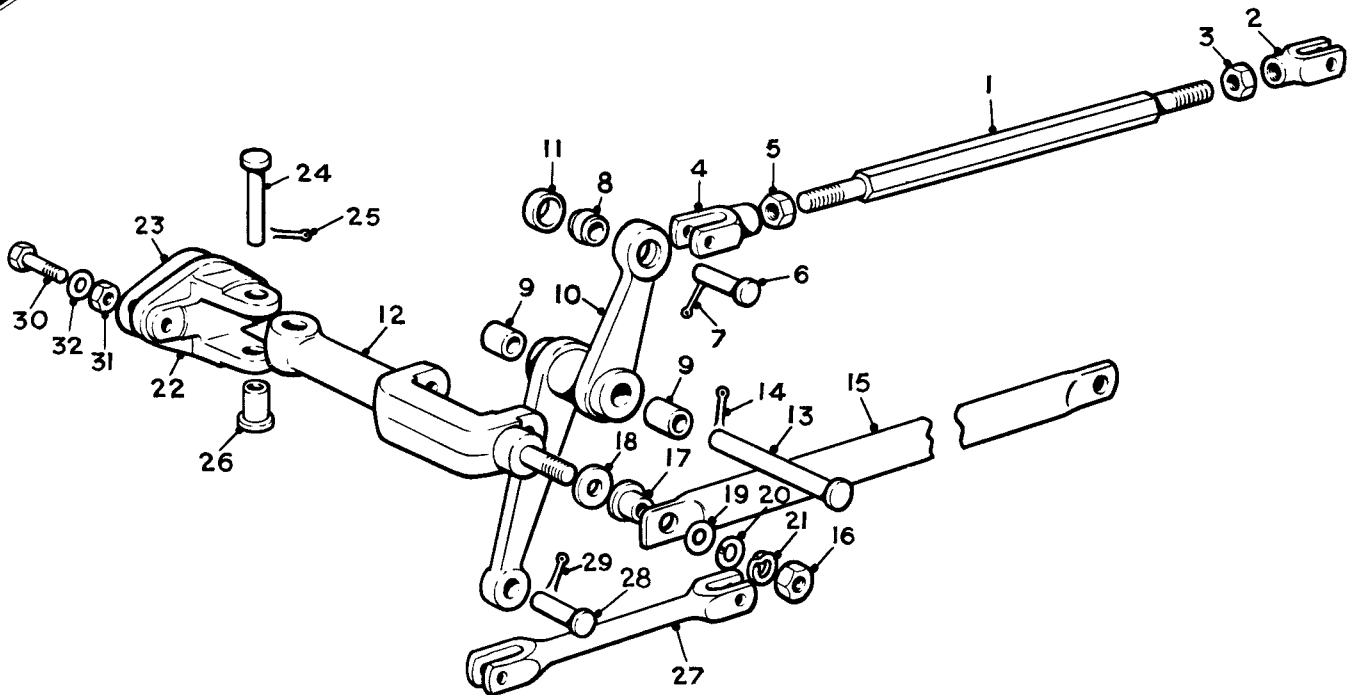
Alt

OPERATING SHAFT AND LEVER



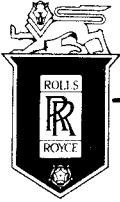
SPARES schedule

SILVER CLOUD AND BENTLEY 'S' TYPE



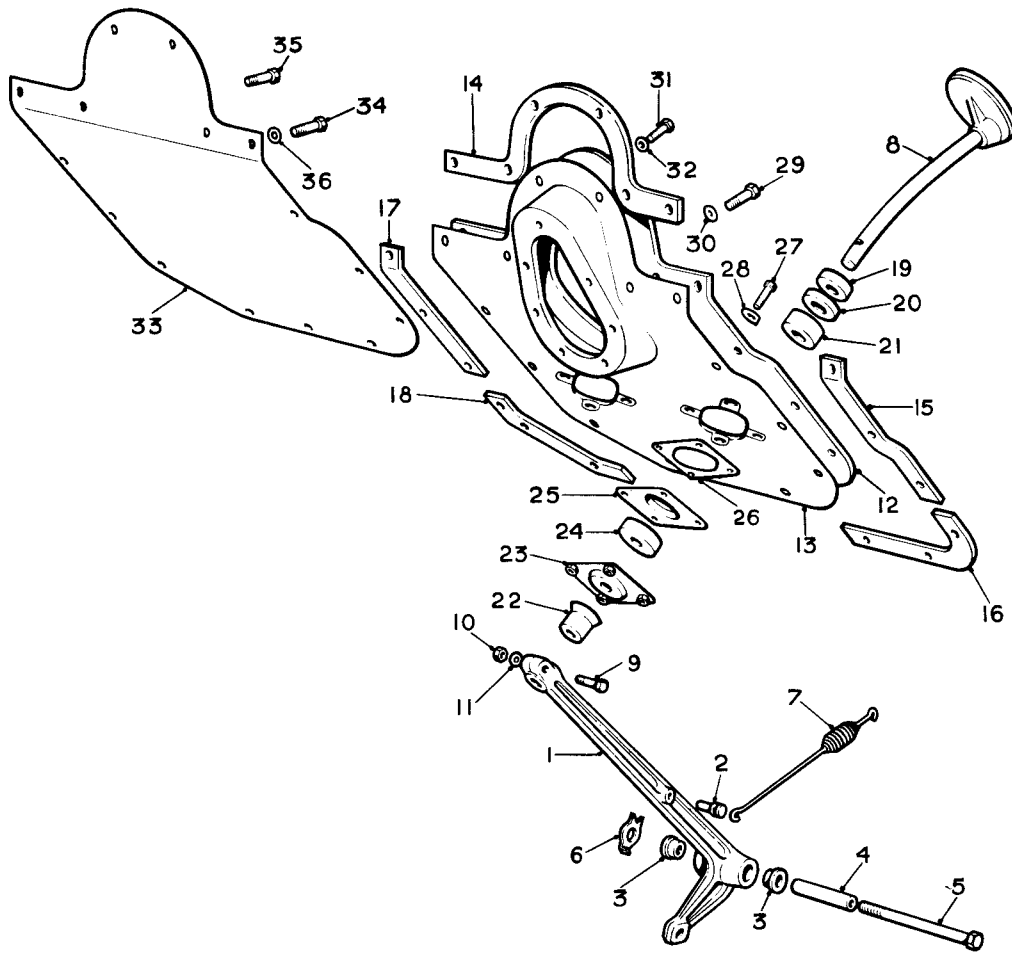
Ref.	Part No.	Description	No off
	GB.5037/SA	BRACKET, LEVER & LINK. ASSY.	1
(1)	UE.1708	Pull rod	1
(2)	KB.1114/Z	Jaw, cross shaft lever end, R.H. thread	1
(3)	K.4313/Z	Nut, jaw	1
(4)	GW.2137	Jaw, inter : lever end, L.H. thread	1
(5)	KB.5054/Z	Nut, jaw	1
(6)	RG.4405	Pin, pull rod	2
(7)	K.4643/Z	Pin, split, pull rod	1
	GB.5038S/A	LEVER ASSEMBLY	1
(8)	GB.1451	Spherical bearing	1
(9)	GB.3615	Bush	2
(10)	GB.5038	Lever	1
(11)	GB.1450	Spherical seating	1
(12)	GB.5037	Bracket, inter. lever	1
(13)	RG.4407	Pin, bearing, inter. lever	1
(14)	K.4643/Z	Pin, split	1
(15)	UE.1964	Stay	1
(16)	K.4313/Z	Nut, stay to bracket	1
(17)	GB.4751	Bush, stay to bracket	1
(18)	GB.3309	Washer, adjusting	As reqd.
(19)	GB.3306	Washer, plain, stay	1
(20)	K.9009/Z	Washer, spring	1
(21)	K.3808/Z	Washer "Thackeray"	1
(22)	GB.3620	Bracket, Anchor	1
(23)	UE.1920	Piece, packing, bracket	1
(24)	KB.4569/Z	Pin, bearing, anchor bracket	1
(25)	K.4643/Z	Split pin, bearing pin	1
(26)	KB.1180/Z	Collar, bearing pin	1
(27)	GB.4753	Link, bottom	1
(28)	RG.4406	Pin, link	2
(29)	K.4643/Z	Split pin, link pin	2
(30)	UA.104/Z	Bolt, bracket to frame	2
(31)	UA.301/Z	Nut, bolt	2
(38)	UA.1251/Z	Washer, bolt	2

BRACKET, LEVER & LINKAGE



SPARES schedule

SILVER CLOUD AND BENTLEY 'S' TYPE



Ref.	Part No.	Description	No off	Ref.	Part No.	Description	No off
	UR.2416	PEDAL LEVER ASSEMBLY	1	(19)	FB.4455	Holder, stop	1
(1)	UR.2224	Lever	1	(20)	RF.5854	Stop, rubber	1
(2)	UR.2417	Pin, anchor	1	(21)	FW.1597	Stop, rubber, additional	As reqd.
(3)	RF.7381	Bush	2	(22)	UR.2410	Seal and stop, rubber	1
(4)	UR.2420	Distance piece, lever	1	(23)	373/234	Housing, bottom	1
(5)	UR.2425	Pivot, bolt	1	(24)	UR.1009	Seal, felt	1
(6)	UR.2482	Washer, tab, bolt	1	(25)	173/494	Housing, top	1
(7)	UR.2419	Spring, pedal	1	(26)	UR.1007	Joint, rubber	1
(8)	UR.2418	PEDAL AND RUBBER ASSY.	1	(27)	CS.30542/Z	Screw, housing	4
	RF.4281	Rubber	1	(28)	UR.1570	Washer, screw	4
(9)	UA. 157/Z	Bolt, stem	1	(29)	CS.30542/Z	Screw, plate to dash	15
(10)	UA.302/Z	Nut, bolt	1	(30)	KB.3905/Z	Washer, screw	15
(11)	UA.1252/Z	Washer, nut	1	(31)	CS.30542/Z	Screw, column seal to plate	7
	UR.2411	PLATE, PEDAL GAP, ASSY.	1	(32)	K.4404/Z	Washer, screw	7
(12)	UR.2862	Felt	1	(33)	UR.2025	PLATE, BLANKING, ASSY.	1
(13)	UR.2261	Plate	1	(34)	CS.30542/Z	Screw, blanking plate	14
(14)	UR.2085	Seal, upper	1	(35)	CS.30545/Z	Screw, blanking plate, speedo clip	1
(15)	UR.2125	Seal, side, upper L.H.	1	(36)	KB.3905/Z	Washer, screw	15
(16)	UR.2033	Seal, side, lower L.H.	1				
(17)	UR.2032	Seal, side, upper R.H.	1				
(18)	UR.2034	Seal, side, lower R.H.	1				

CLUTCH PEDAL