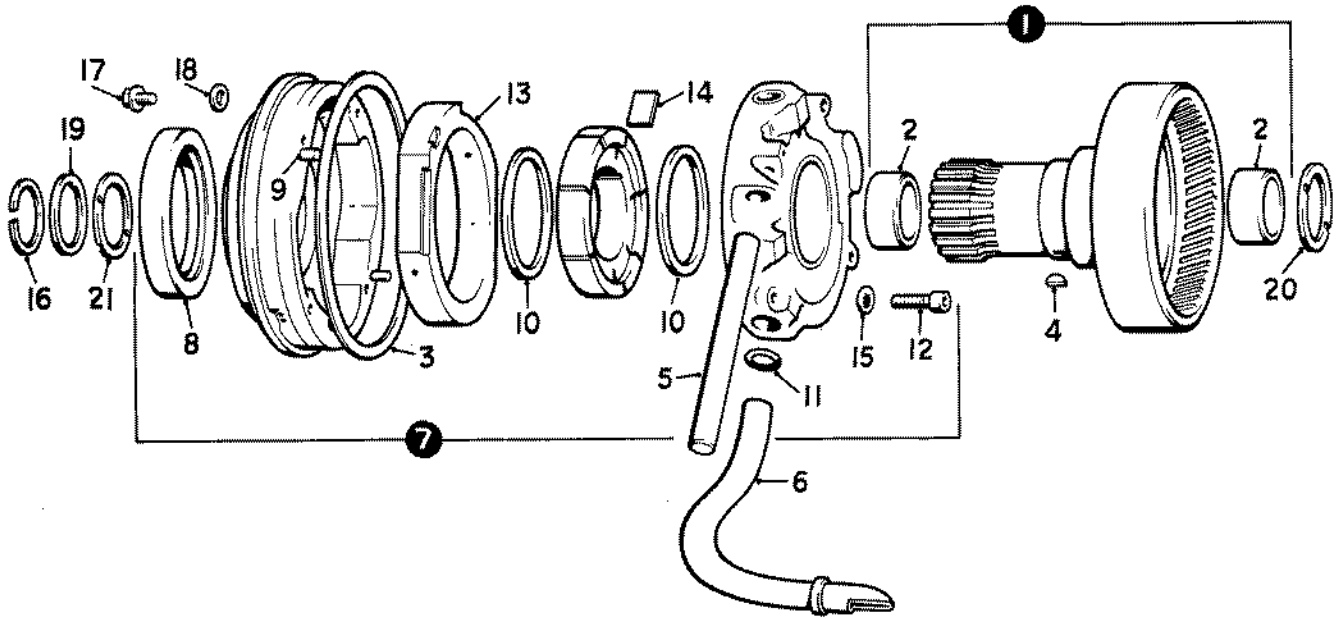


SECTION E.

FRONT PUMP

TITLE	GEARBOX SERIES	PAGE
FRONT PUMP	ALL.	E.I



Ref.	Part No.	Description	No. off
(1)	UG.1408	GEARSHAFT, DRIVE—ASSY.	1
(2)	UG.1339	Bush, intermediate shaft	2
(3)	UG.1322	Joint, pump to casing	1
(4)	UG.105	Key, driving, gearshaft	1
(5)	UG.286	Pipe, pump to servo	1
(6)	UG.1452	PIPE, SUMP FILTER TO PUMP—ASSY.	1
(7)	UG.2618	PUMP, FRONT—ASSY.	1
(8)	UG.3670	Seal, oil	1
(9)	UG.609	Pin, dowel	2
(10)	UG.455	Ring, inner	2
(11)	UG.137	Ring, sealing, pipe	1
(12)	UG.1422	Screw, pump body	4
(13)	UG.2617	Slide, variable delivery	1
(14)	UG.481	Vane, rotor	7
(15)	UG.1218	Washer, lock, screw	4
(16)	UG.170	Ring, spring, thrust washers	1
(17)	UG.1527	Screw, pump to casing	2
(18)	UG.280	Washer, locating, pump	1
(19)	UG.1448	Washer, thrust, .093"	<div style="display: flex; align-items: center;"> <div style="border-left: 1px solid black; border-right: 1px solid black; border-bottom: 1px solid black; width: 10px; height: 10px; margin-right: 5px;"></div> <div style="display: flex; flex-direction: column; gap: 5px;"> 1 as reqd. </div> </div>
	UG.1289	Washer, thrust, .098"	
	UG.1909	Washer, thrust, .103"	
	UG.1910	Washer, thrust, .106"	
	UG.1911	Washer, thrust, .109"	
	UG.1912	Washer, thrust, .112"	
	UG.1913	Washer, thrust, .115"	
	UG.1914	Washer, thrust, .117"	
(20)	UG.281	Washer, grooved, gearshaft	1
(21)	UG.287	Washer, grooved, gearshaft	1

FRONT PUMP