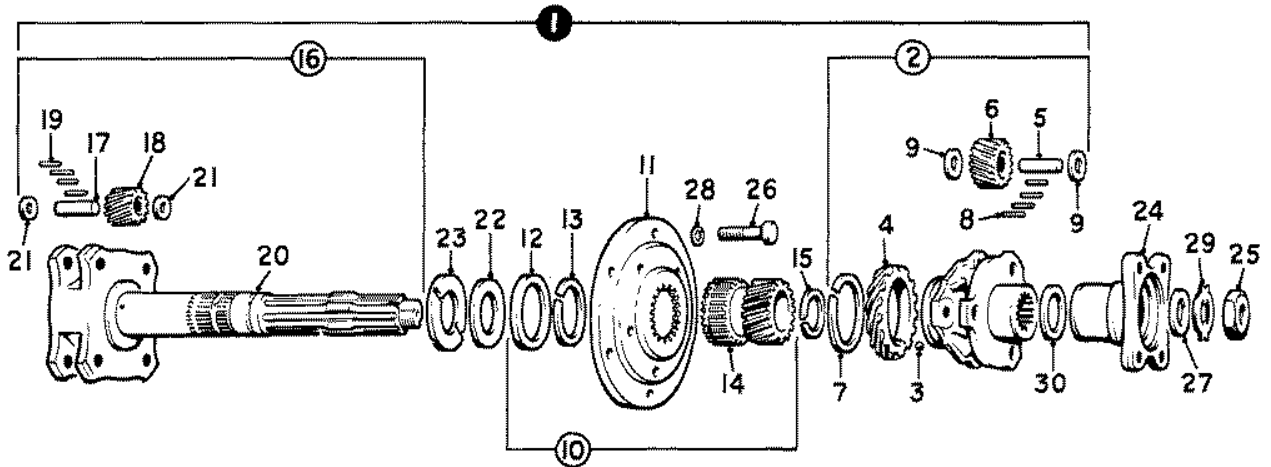


SECTION J.

OUTPUT SHAFT AND REVERSE ASSEMBLY

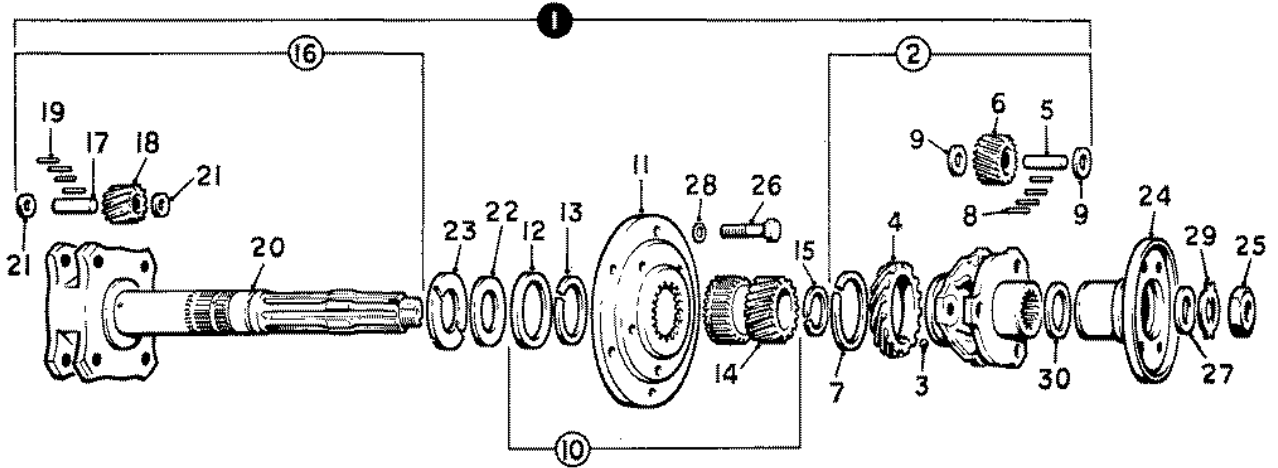
TITLE	GEARBOX SERIES	PAGE
OUTPUT SHAFT	C, C-C, C-E, C-E8, C-P.	J.1
	C, C-C, C-E, C-E8, C-P, C-PC.	J.2
	C-SW.	J.3
	C, C-C, C-E, C-E8, C-P, C-PC.	J.4
	C-SW.	J.5
	SM, SM-C, C-SWM.	J.6
	T.	J.7
REVERSE ANNULUS GEAR AND CLUTCH CONE.	C, C-C, C-E, C-E8, C-P.	J.8
	C, C-C, C-E, C-E8, C-P, C-PC.	J.9
	SM, SM-C, C-SW, C-SWM.	J.10
	C, C-C, C-E, C-E8, C-P, C-PC.	J.11
	C-SW, C-SWM, SM, SM-C, T.	J.12
	C, C-C, C-E, C-E8, CP, C-PC.	J.13
GEARBOX REAR EXTENSION	C-PC.	J.14
	C-SW.	J.15
	C-SWM.	J.16
	SM, SM-C.	J.17
	SM, SM-C.	J.18
	T.	J.19
	REAR GEARBOX MOUNTING	C, C-C, C-E, C-E8, C-P, C-PC.
C-SW.	J.21	
TIE ROD-CHASSIS MOUNTING BRACKET.	C, C-C, C-E, C-E8, C-P, C-PC, C-SW.	J.22



Ref.	Part No.	Description	No. off	Ref.	Part No.	Description	No. off
(1)	UG.1403	CASING, REAR EXTENSION, AND REVERSE EPICYCLIC UNIT—ASSY.	1	(24)	RG.8074 G.54923	FLANGE, coupling, output shaft	1
(2)	UG.547	CARRIER, PLANET, REVERSE ASSY.	1			NUT, coupling flange	1
(3)	RG.6209	Ball, pump driving gear	1	(25)	UG.2288	NUT, coupling flange	1
(4)	UG.1320	Gear, driving	1			Only with Output Shaft Assy. UG.1401	
(5)	UG.239	Pin, reverse pinion	3	(26)	UA.159/R G.54680	SCREW, driving flange to drum	6
(6)	UG.157	Pinion, reverse.	3			WASHER, clamping, coupling flange	1
(7)	UG.162	Ring, spring, driving gear	1	(27)	UG.933	WASHER, clamping, coupling flange	1
(8)	UG.614	Needle, roller bearing, pinion	57			Only with Output Shaft Assy. UG.1401	
(9)	UG.299	Washer, thrust, pinion	6	(28)	K.9009/R G.54681	WASHER, screw, driving flange	6
(10)	UG.540	FLANGE, DRIVING AND REVERSE SUN WHEEL—ASSY.	1			WASHER, tab, coupling	1
(11)	UG.189	Flange, driving	1	(29)	UG.934	WASHER, tab, coupling	1
(12)	UG.169	Retainer, thrust washers	1			Only with Output Shaft Assy. UG.1401	
(13)	UG.308	Ring, spring, driving flange	1	(30)		WASHER, adjusting, flange	1
(14)	UG.153	WHEEL, SUN, REVERSE—ASSY.	1			RG.6415 .040" thick	1 as reqd.
(15)	UG.149 UG.1401	Ring, spring, sun wheel	1			RG.6416 .045" thick	
		SHAFT, OUTPUT, AND REAR PLANET CARRIER—ASSY.	1			RG.6417 .050" thick	
		Superseded by UG.1402 Assy.				RG.6418 .055" thick	
(16)	UG.1402	SHAFT, OUTPUT, AND REAR PLANET CARRIER—ASSY.	1			RG.6419 .060" thick	
		Use for all replacements of UG.1401 Assy.				RG.6420 .065" thick	
(17)	UG.239	Pin, rear planet pinions	4			RG.6554 .070" thick	
(18)	UG.514	Pinion, rear planet	4			RG.6555 .075" thick	
(19)	UG.614	Roller, needle bearing, pinions	76			RG.6556 .080" thick	
(20)	UG.1399	SHAFT, OUTPUT, AND BUSH—ASSY.	1			RG.6557 .085" thick	
(21)	UG.245	Washer, thrust, pinions	8			RG.6558 .090" thick	
(22)	UG.172	Washer, thrust, flat, carrier	1			RG.6559 .095" thick	
(23)	UG.166	Washer, thrust, grooved, carrier	1			RG.6560 .100" thick	
						RG.6561 .105" thick	
						RG.6562 .110" thick	
						RG.6563 .115" thick	

OUTPUT SHAFT

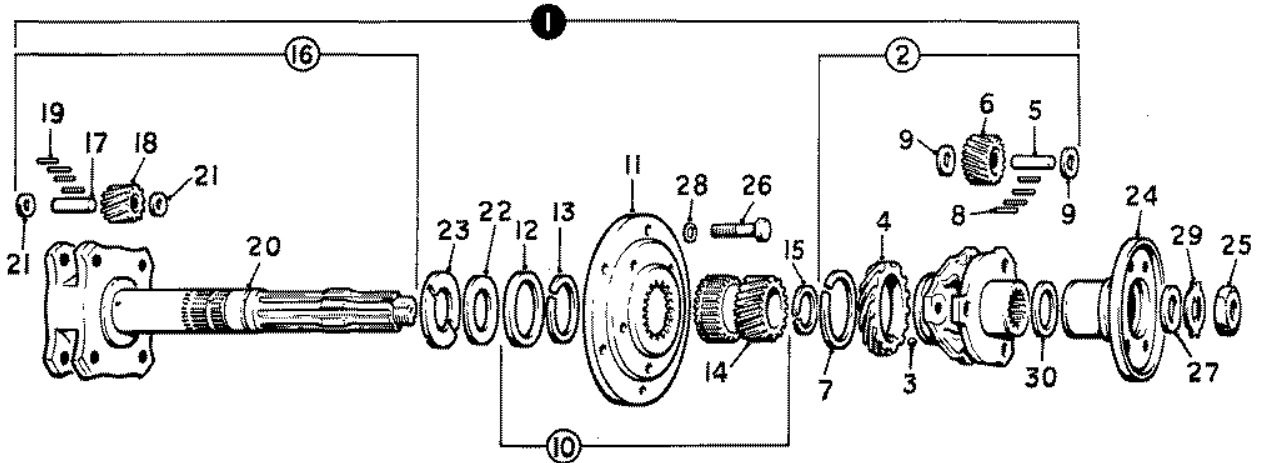
MODIFICATION No. 26 NOT INCORPORATED



Ref.	Part No.	Description	No. off	Ref.	Part No.	Description	No. off
(1)	UG.1414	CASING, REAR EXTENSION, AND REVERSE EPICYCLIC UNIT—ASSY.	1	(24)	RG.8074 G.54923	FLANGE, coupling, output shaft NUT, coupling flange	1 1
(2)	UG.547	CARRIER, PLANET, REVERSE ASSY.	1	(25)	UG.2288	NUT, coupling flange	1
(3)	RG.6209	Ball, driving gear	1			Only with Output Shaft Assy. UG.1401	
(4)	UG.1320	Gear, driving	1	(26)	UA.159/R G.54680	SCREW, driving flange WASHER, clamping, coupling flange	6 1
(5)	UG.239	Pin, reverse pinion	3	(27)	UG.933	WASHER, clamping, coupling flange	1
(6)	UG.157	Pinion, reverse	3			Only with Output Shaft Assy. UG.1402	
(7)	UG.162	Ring, spring, driving gear	1	(28)	K.9009/R G.54681	WASHER, screw, driving flange WASHER, coupling	6 1
(8)	UG.614	Needle, roller bearing, pinion	57	(29)	UG.934	WASHER, tab, coupling	1
(9)	UG.299	Washer, thrust, pinion	6			Only with Output Shaft Assy. UG.1402	
(10)	UG.540	FLANGE, DRIVING AND REVERSE SUN WHEEL—ASSY.	1	(30)	RG.6415 RG.6416 RG.6417 RG.6418 RG.6419 RG.6420 RG.6554 RG.6555 RG.6556 RG.6557 RG.6558 RG.6559 RG.6560 RG.6561 RG.6562 RG.6563	WASHER, adjusting, flange .040" thick .045" thick .050" thick .055" thick .060" thick .065" thick .070" thick .075" thick .080" thick .085" thick .090" thick .095" thick .100" thick .105" thick .110" thick .115" thick	1 as reqd.
(11)	UG.189	Flange, driving	1				
(12)	UG.169	Retainer, thrust washers	1				
(13)	UG.308	Ring, spring, driving flange	1				
(14)	UG.153	WHEEL, SUN, REVERSE—ASSY.	1				
(15)	UG.149 UG.1401	Ring, spring, sun wheel SHAFT, OUTPUT, AND REAR PLANET CARRIER—ASSY.	1 1				
		Superseded by UG.1402 Assy.					
(16)	UG.1402	SHAFT, OUTPUT, AND REAR PLANET CARRIER—ASSY.	1				
		Use for all replacements of UG.1401 Assy.					
(17)	UG.239	Pin, rear planet pinions	4				
(18)	UG.514	Pinion, rear planet	4				
(19)	UG.614	Roller, needle bearing, pinions	76				
(20)	UG.1399	SHAFT, OUTPUT, AND BUSH—ASSY.	1				
(21)	UG.245	Washer, thrust, pinions	8				
(22)	UG.172	Washer, thrust, flat, carrier	1				
(23)	UG.166	Washer, thrust, grooved, carrier	1				

OUTPUT SHAFT

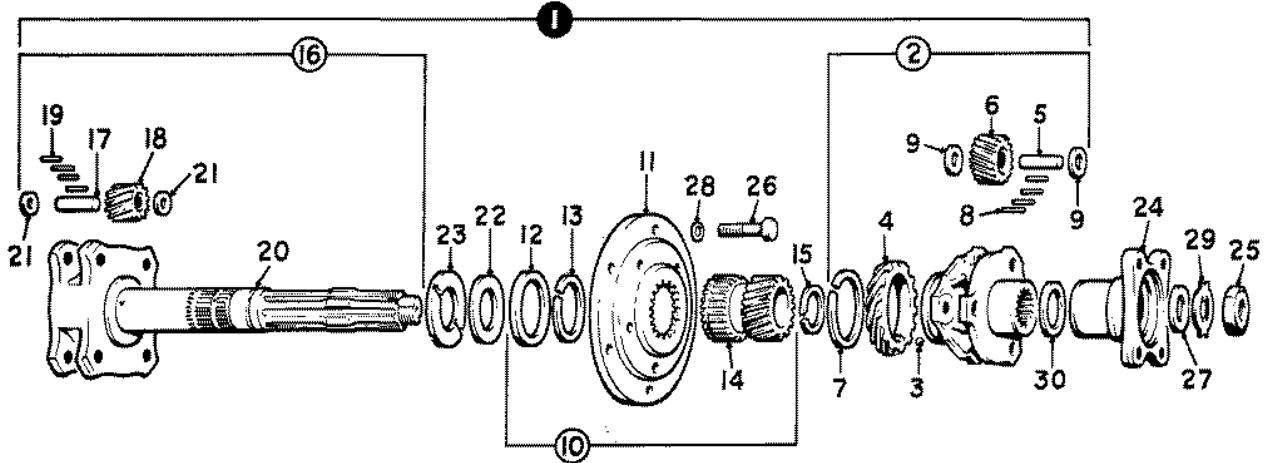
(MODIFICATION No. 26 IS INCORPORATED—2 LOCATING HOLES IN THE ROTATING CLUTCH CONE AND REVERSE ANNULUS GEAR FOR RETAINING PLATE)



Ref.	Part No.	Description	No. off	Ref.	Part No.	Description	No. off
(1)	UG.1534	CASING, REAR EXTENSION, AND REVERSE EPICYCLIC UNIT—ASSY.	1	(23)	UG.166	Washer, thrust, grooved carrier	1
(2)	UG.547	CARRIER, PLANET, REVERSE ASSY.	1	(24)	UG.1629	FLANGE, coupling, output shaft	1
(3)	RG.6209	Ball, pump driving gear	1	(25)	UG.2288	NUT, coupling flange	1
(4)	UG.1320	Gear, driving	1	(26)	UA.159/R	SCREW, driving flange	6
(5)	UG.239	Pin, reverse pinion	3	(27)	UG.933	WASHER, clamping, coupling flange	1
(6)	UG.157	Pinion, reverse	3	(28)	K.9009/R	WASHER, screw, driving flange	6
(7)	UG.162	Ring, spring, driving gear	1	(29)	UG.934	WASHER, tab, coupling	1
(8)	UG.614	Needle, roller bearing, pinion	57	(30)		WASHER, adjusting	
(9)	UG.299	Washer, thrust, pinion	6	RG.6415		.040" thick	
(10)	UG.540	FLANGE, DRIVING AND REVERSE SUN WHEEL—ASSY.	1	RG.6416		.045" thick	
(11)	UG.189	Flange, driving	1	RG.6417		.050" thick	
(12)	UG.169	Retainer, thrust washers	1	RG.6418		.055" thick	
(13)	UG.308	Ring, spring, driving flange	1	RG.6419		.060" thick	
(14)	UG.153	WHEEL, SUN, REVERSE—ASSY.	1	RG.6420		.065" thick	
(15)	UG.149	Ring, spring, sun wheel	1	RG.6554		.070" thick	1
(16)	UG.1402	SHAFT, OUTPUT, AND REAR PLANET CARRIER—ASSY.	1	RG.6555		.075" thick	as
(17)	UG.239	Pin, rear planet pinion	4	RG.6556		.080" thick	reqd.
(18)	UG.514	Pinion, rear planet	4	RG.6557		.085" thick	
(19)	UG.614	Roller, needle bearing, pinion	76	RG.6558		.090" thick	
(20)	UG.1399	SHAFT, OUTPUT, AND BUSH—ASSY.	1	RG.6559		.095" thick	
(21)	UG.245	Washer, thrust, pinions	8	RG.6560		.100" thick	
(22)	UG.172	Washer, thrust, flat carrier	1	RG.6561		.105" thick	
				RG.6562		.110" thick	
				RG.6563		.115" thick	

OUTPUT SHAFT

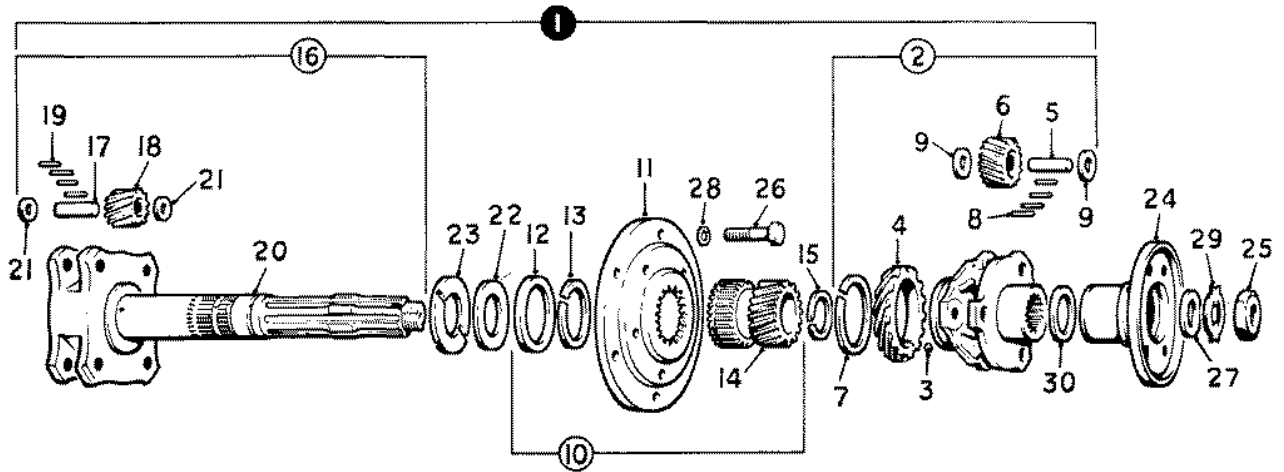
(MODIFICATION No. 26 IS INCORPORATED—2 LOCATING HOLES IN THE ROTATING CLUTCH CONE AND REVERSE ANNULUS GEAR FOR RETAINING PLATE)



Ref.	Part No.	Description	No. off	Ref.	Part No.	Description	No. off
(1)	UG.1879	CASING, REAR EXTENSION, AND REVERSE EPICYCLIC UNIT—ASSY.	1		G.54923	NUT, coupling flange	1
(2)	UG.547	CARRIER, PLANET, REVERSE ASSY.	1	(25)	UG.2288	NUT, coupling flange	1
(3)	RG.6209	Ball, pump driving gear	1			Only with Output Shaft Assy. UG.1401	
(4)	UG.1320	Gear, driving	1	(26)	UA.159/R	SCREW, driving flange to drum	6
(5)	UG.239	Pin, reverse pinion	3		G.54680	WASHER, clamping, coupling flange	1
(6)	UG.157	Pinion, reverse	3			Only with Output Shaft Assy. UG.1401	
(7)	UG.162	Ring, spring, driving gear	1	(27)	UG.933	WASHER, clamping, coupling flange	1
(8)	UG.614	Needle, roller bearing, pinion	57			Only with Output Shaft Assy. UG.1402	
(9)	UG.299	Washer, thrust, pinion	6	(28)	K.9009/R	WASHER, screw, driving flange	6
(10)	UG.540	FLANGE, DRIVING AND REVERSE SUN WHEEL—ASSY.	1		G.54681	WASHER, tab, coupling	1
(11)	UG.189	Flange, driving	1	(29)	UG.934	WASHER, tab, coupling	1
(12)	UG.169	Retainer, thrust washers	1			Only with Output Shaft Assy. UG.1401	
(13)	UG.308	Ring, spring, driving flange	1	(30)		WASHER, adjusting, flange	1
(14)	UG.153	WHEEL, SUN, REVERSE—ASSY.	1		RG.6415	.040" thick	1 as reqd.
(15)	UG.149	Ring, spring, sun wheel	1		RG.6416	.045" thick	
	UG.1401	SHAFT, OUTPUT, AND REAR PLANET CARRIER—ASSY.	1		RG.6417	.050" thick	
		Superseded by UG.1402 Assy.			RG.6418	.055" thick	
(16)	UG.1402	SHAFT, OUTPUT, AND REAR PLANET CARRIER—ASSY.	1		RG.6419	.060" thick	
		Use for all replacements of UG.1401 Assy.			RG.6420	.065" thick	
(17)	UG.239	Pin, rear planet pinions	4		RG.6554	.070" thick	
(18)	UG.514	Pinion, rear planet	4		RG.6555	.075" thick	
(19)	UG.614	Roller, needle bearing, pinions	76		RG.6556	.080" thick	
(20)	UG.1399	SHAFT, OUTPUT, AND BUSH—ASSY.	1		RG.6557	.085" thick	
(21)	UG.245	Washer, thrust, pinions	8		RG.6558	.090" thick	
(22)	UG.172	Washer, thrust, planet carrier	1		RG.6559	.095" thick	
(23)	UG.166	Washer, thrust, planet carrier	1		RG.6560	.100" thick	
(24)	RG.8074	FLANGE, coupling, output shaft	1		RG.6561	.105" thick	
					RG.6562	.110" thick	
					RG.6563	.115" thick	
					UG.2365	.120" thick	
					UG.2366	.125" thick	

OUTPUT SHAFT

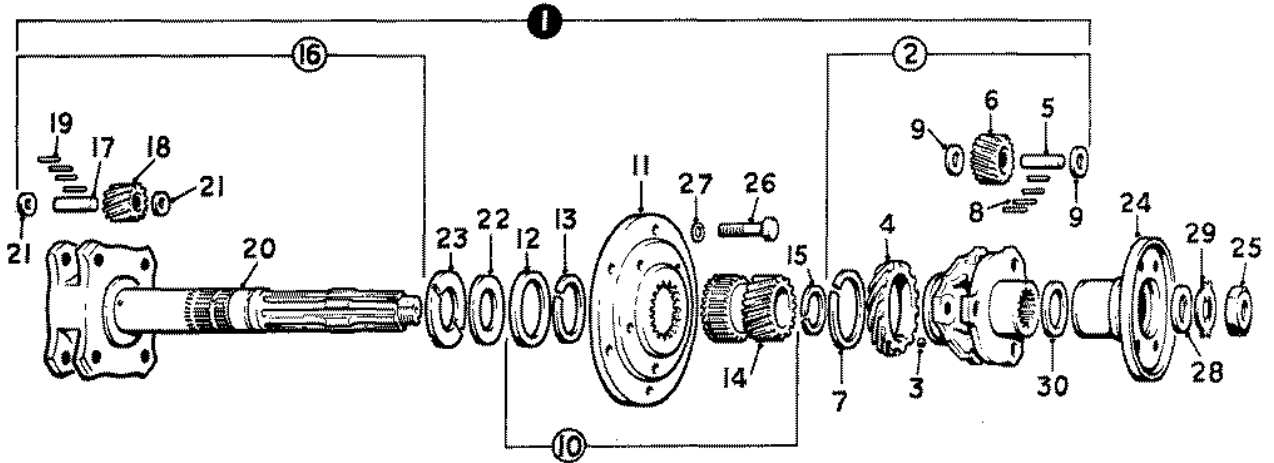
(MODIFICATION No. 26 IS INCORPORATED—4 LOCATING HOLES IN THE ROTATING CLUTCH CONE AND REVERSE ANNULUS GEAR FOR RETAINING PLATE)



Ref.	Part No.	Description	No. off	Ref.	Part No.	Description	No. off
(1)	UG.1881	CASING, REAR EXTENSION, AND REVERSE EPICYCLIC UNIT—ASSY.	1	(23)	UG.166	Washer, thrust, grooved carrier	1
(2)	UG.547	CARRIER, PLANET, REVERSE ASSY.	1	(24)	UG.1629	FLANGE, coupling, output shaft	1
(3)	RG.6209	Ball, pump driving gear	1	(25)	UG.2288	NUT, coupling flange	1
(4)	UG.1320	Gear, driving	1	(26)	UA.159/R	SCREW, driving flange	6
(5)	UG.239	Pin, reverse pinion	3	(27)	UG.933	WASHER, clamping, coupling flange	1
(6)	UG.157	Pinion, reverse	3	(28)	K.9009/R	WASHER, screw, driving flange	6
(7)	UG.162	Ring, spring, driving gear	1	(29)	UG.934	WASHER, tab, coupling	1
(8)	UG.614	Needle, roller bearing, pinion	57	(30)		WASHER, adjusting	
(9)	UG.299	Washer, thrust, pinion	6	RG.6415		.040" thick	
(10)	UG.540	FLANGE, DRIVING AND REVERSE SUN WHEEL—ASSY.	1	RG.6416		.045" thick	
(11)	UG.189	Flange, driving	1	RG.6417		.050" thick	
(12)	UG.169	Retainer, thrust washers	1	RG.6418		.055" thick	
(13)	UG.308	Ring, spring, driving flange	1	RG.6419		.060" thick	
(14)	UG.153	WHEEL, SUN, REVERSE—ASSY.	1	RG.6420		.065" thick	
(15)	UG.149	Ring, spring, sun wheel	1	RG.6554		.070" thick	1
(16)	UG.1402	SHAFT, OUTPUT, AND REAR PLANET CARRIER—ASSY.	1	RG.6555		.075" thick	as
(17)	UG.239	Pin, rear planet pinion	4	RG.6556		.080" thick	reqd.
(18)	UG.514	Pinion, rear planet	4	RG.6557		.085" thick	
(19)	UG.614	Roller, needle bearing, pinion	76	RG.6558		.090" thick	
(20)	UG.1399	SHAFT, OUTPUT, AND BUSH—ASSY.	1	RG.6559		.095" thick	
(21)	UG.245	Washer, thrust, pinions	8	RG.6560		.100" thick	
(22)	UG.172	Washer, thrust, flat carrier	1	RG.6561		.105" thick	
				RG.6562		.110" thick	
				RG.6563		.115" thick	

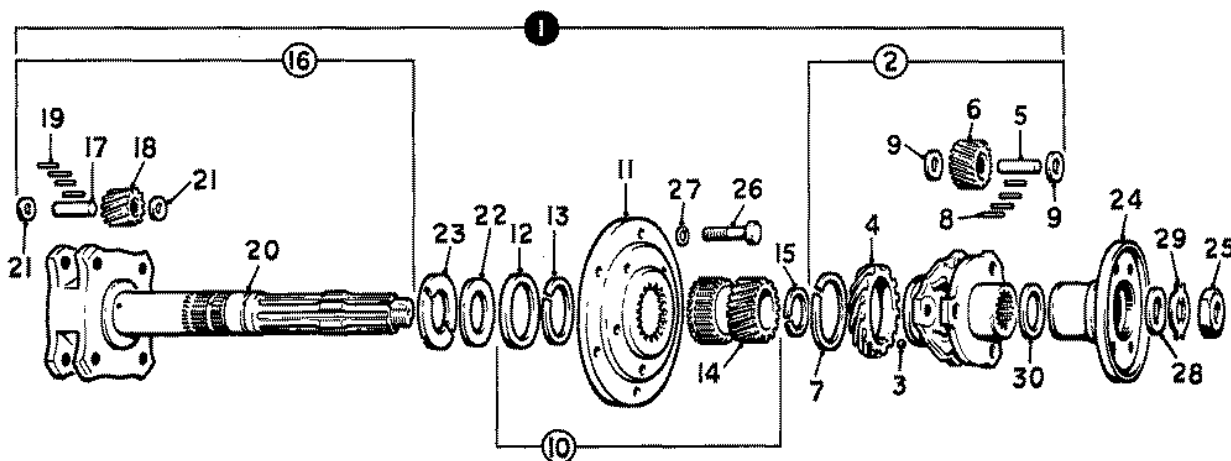
OUTPUT SHAFT

(MODIFICATION No. 26 IS INCORPORATED—4 LOCATING HOLES IN THE ROTATING CLUTCH CONE AND REVERSE ANNULUS GEAR FOR RETAINING PLATE)



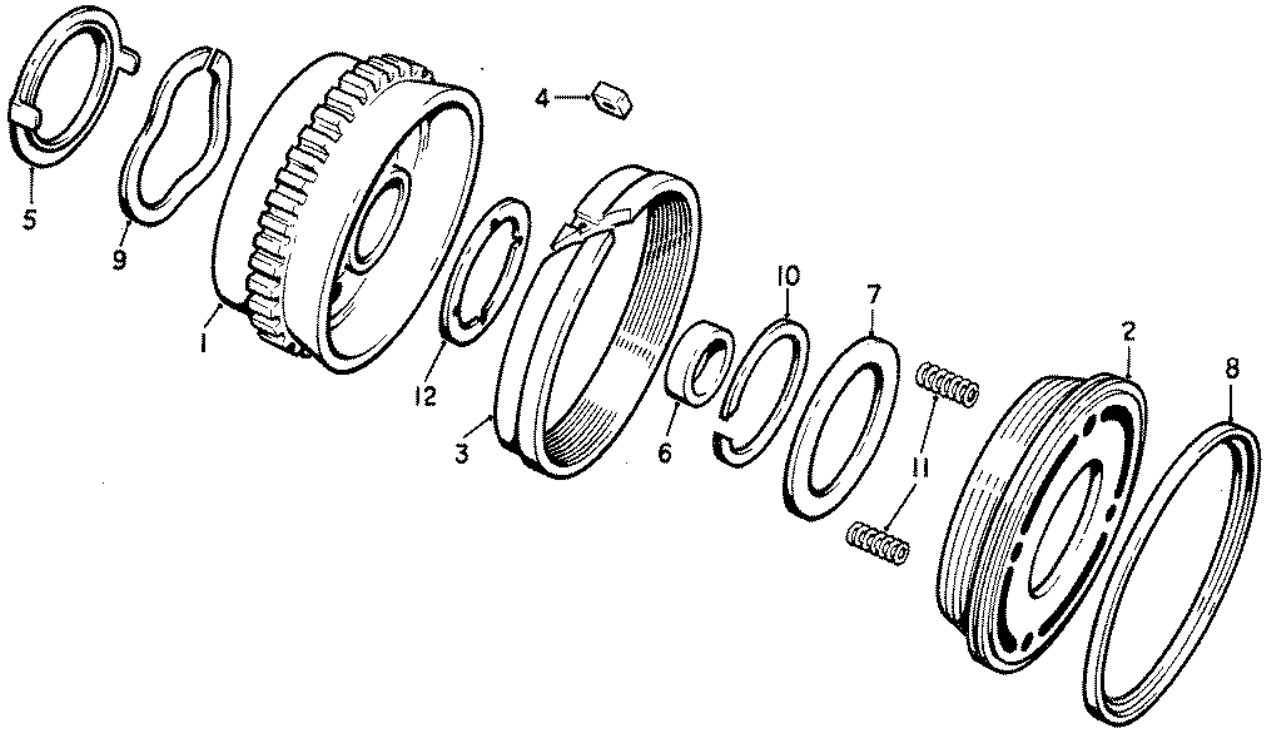
Ref.	Part No.	Description	No. off	Ref.	Part No.	Description	No. off
(1)	UG.2122	CASING, REAR EXTENSION, AND REVERSE EPICYCLIC UNIT—ASSY.	1	(23)	UG.166	Washer, thrust, grooved carrier	1
(2)	UG.547	CARRIER, PLANET, REVERSE ASSY.	1	(24)	UG.1629	FLANGE, coupling, output shaft	1
(3)	RG.6209	Ball, pump driving gear	1	(25)	UG.2288	NUT, coupling flange	1
(4)	UG.1320	Gear, driving	1	(26)	UA.159/R	SCREW, driving flange	6
(5)	UG.239	Pin, reverse pinion	3	(27)	K.9009/R	WASHER, screw, driving flange	6
(6)	UG.157	Pinion, reverse	3	(28)	UG.933	WASHER, clamping, coupling flange	1
(7)	UG.162	Ring, spring, driving gear	1	(29)	UG.934	WASHER, tab, coupling	1
(8)	UG.614	Needle, roller bearing, pinion	57	(30)		WASHER, adjusting	
(9)	UG.299	Washer, thrust, pinion	6	RG.6415		.040" thick	
(10)	UG.540	FLANGE, DRIVING AND REVERSE SUN WHEEL—ASSY.	1	RG.6416		.045" thick	
(11)	UG.189	Flange, driving	1	RG.6417		.050" thick	
(12)	UG.169	Retainer, thrust washers	1	RG.6418		.055" thick	
(13)	UG.308	Ring, spring, driving flange	1	RG.6419		.060" thick	
(14)	UG.153	WHEEL, SUN, REVERSE—ASSY.	1	RG.6420		.065" thick	
(15)	UG.149	Ring, spring, sun wheel	1	RG.6554		.070" thick	1
(16)	UG.1402	SHAFT, OUTPUT, AND REAR PLANET CARRIER—ASSY.	1	RG.6555		.075" thick	as
(17)	UG.239	Pin, rear planet pinions	4	RG.6556		.080" thick	reqd.
(18)	UG.514	Pinion, rear planet	4	RG.6557		.085" thick	
(19)	UG.614	Roller, needle bearing, pinions	76	RG.6558		.090" thick	
(20)	UG.1399	SHAFT, OUTPUT, AND BUSH—ASSY.	1	RG.6559		.095" thick	
(21)	UG.245	Washer, thrust, pinions	8	RG.6560		.100" thick	
(22)	UG.172	Washer, thrust, flat carrier	1	RG.6561		.105" thick	
				RG.6562		.110" thick	
				RG.6563		.115" thick	

OUTPUT SHAFT
(MODIFICATION No. 26 IS INCORPORATED)



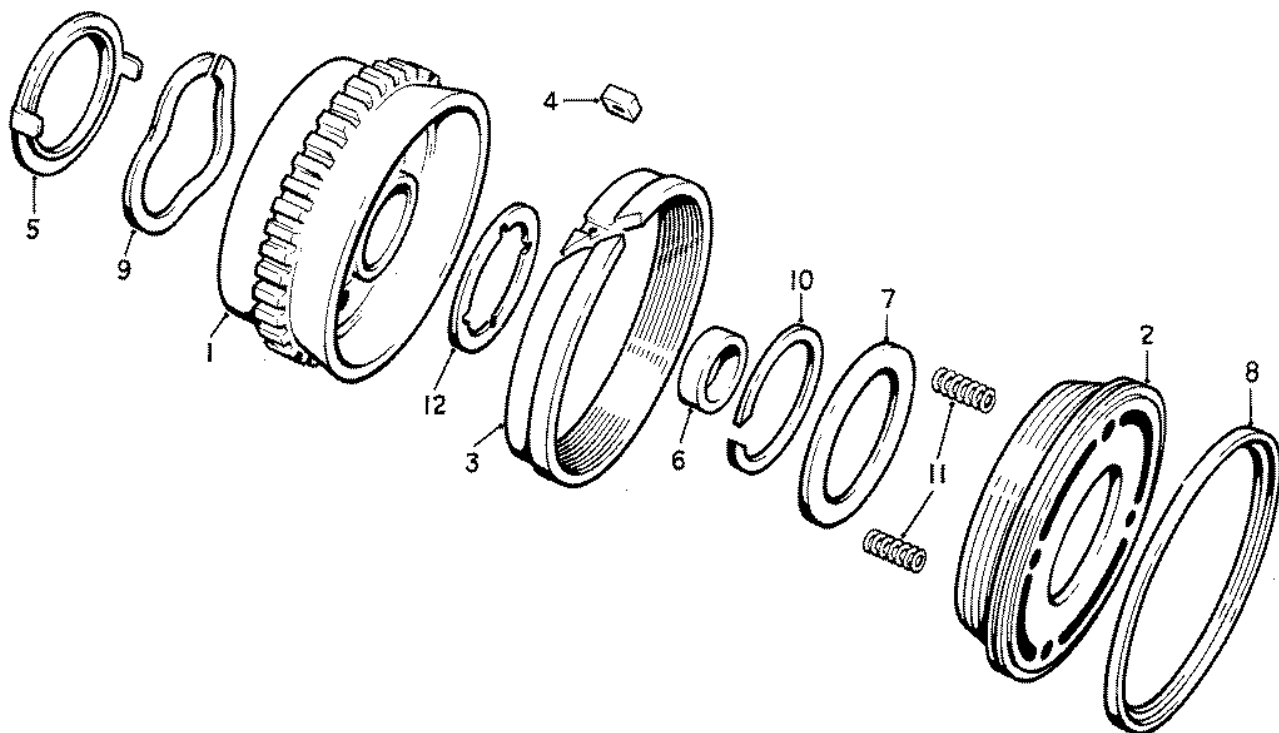
Ref.	Part No.	Description	No. off	Ref.	Part No.	Description	No. off
(1)	UG.3667	CASING, REAR EXTENSION, AND REVERSE EPICYCLIC UNIT—ASSY.	1	(24)	UG.3101	FLANGE, coupling, output shaft	1
(2)	UG.547	CARRIER, PLANET, REVERSE ASSY.	1	(25)	UG.2288	NUT, coupling flange	1
(3)	RG.6209	Ball, pump driving gear	1	(26)	UA.139/R	SCREW, driving flange	6
(4)	UG.1320	Gear, driving	1	(27)	K.9009/R	WASHER, screw, driving flange	6
(5)	UG.239	Pin, reverse pinion	3	(28)	UG.933	WASHER, clamping, coupling flange	1
(6)	UG.157	Pinion, reverse	3	(29)	UG.934	WASHER, tab, coupling flange	1
(7)	UG.162	Ring, spring, driving gear	1	(30)		WASHER, adjusting	
(8)	UG.614	Needle, roller bearing, pinion	57	RG.6415		.040" thick	
(9)	UG.299	Washer, thrust, pinion	6	RG.6416		.045" thick	
(10)	UG.540	FLANGE, DRIVING AND REVERSE SUN WHEEL—ASSY.	1	RG.6417		.050" thick	
(11)	UG.189	Flange, driving	1	RG.6418		.055" thick	
(12)	UG.169	Retainer, thrust washers	1	RG.6419		.060" thick	
(13)	UG.308	Ring, spring, driving flange	1	RG.6420		.065" thick	
(14)	UG.153	WHEEL, SUN, REVERSE—ASSY.	1	RG.6554		.070" thick	1
(15)	UG.149	Ring, spring, sun wheel	1	RG.6555		.075" thick	as
(16)	UG.1402	SHAFT, OUTPUT, AND REAR PLANET CARRIER—ASSY.	1	RG.6556		.080" thick	reqd.
(17)	UG.239	Pin, rear planet pinions	4	RG.6557		.085" thick	
(18)	UG.514	Pinion, rear planet	4	RG.6558		.090" thick	
(19)	UG.614	Roller, needle bearing, pinions	76	RG.6559		.095" thick	
(20)	UG.1399	SHAFT, OUTPUT, AND BUSH—ASSY.	1	RG.6560		.100" thick	
(21)	UG.245	Washer, thrust, pinions	8	RG.6561		.105" thick	
(22)	UG.172	Washer, thrust, flat carrier	1	RG.6562		.110" thick	
(23)	UG.166	Washer, thrust, grooved carrier	1	RG.6563		.115" thick	
				UG.2365		.120" thick	
				UG.2366		.125" thick	

OUTPUT SHAFT



Ref.	Part No.	Description	No. off
(1)	UG.539	CONE, CLUTCH, ROTATING AND REVERSE ANNULUS GEAR—ASSY.	1
(2)	UG.410	CONE, inner	1
(3)	UG.260	CONE, outer	1
(4)	UG.224	KEY, outer cone	1
(5)	UG.329	PLATE, retaining, gear	1
(6)	UG.283	RING, distance, planet carrier	1
(7)	UG.335	RING, retaining, inner cone	1
(8)	UG.144	RING, sealing, outer	1
(9)	UG.325	RING, split, waved	1
(10)	UG.227	RING, spring, inner cone	1
(11)	UG.334	SPRING, inner cone	6
(12)	UG.340	WASHER, thrust, reverse gear	1

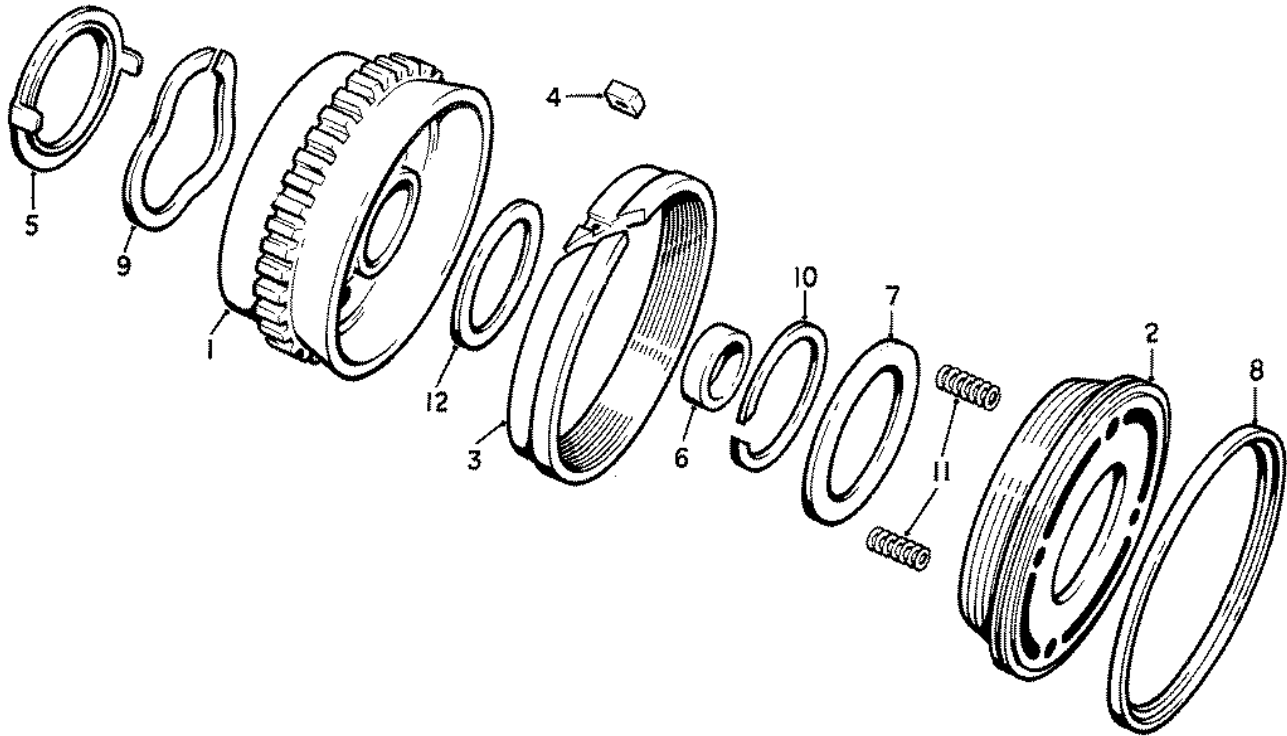
REVERSE ANNULUS GEAR AND CLUTCH CONE
(MODIFICATION No. 26 **NOT** INCORPORATED)



Ref.	Part No.	Description	No. off
(1)	UG.1416	CONE, CLUTCH, ROTATING AND REVERSE ANNULUS GEAR—ASSY.	1
(2)	UG.1412	CONE, inner	1
(3)	UG.1413	CONE, outer	1
(4)	UG.224	KEY, outer cone	1
(5)	UG.329	PLATE, retaining,	1
(6)	UG.283	RING, distance, planet carrier	1
(7)	UG.335	RING, retaining, inner cone	1
(8)	UG.144	RING, sealing, outer	1
(9)	UG.325	RING, split, waved	1
(10)	UG.227	RING, spring, inn - cone	1
(11)	UG.334	SPRING, inner cone	6
(12)	UG.340	WASHER, thrust, reverse gear	1

REVERSE ANNULUS GEAR AND CLUTCH CONE

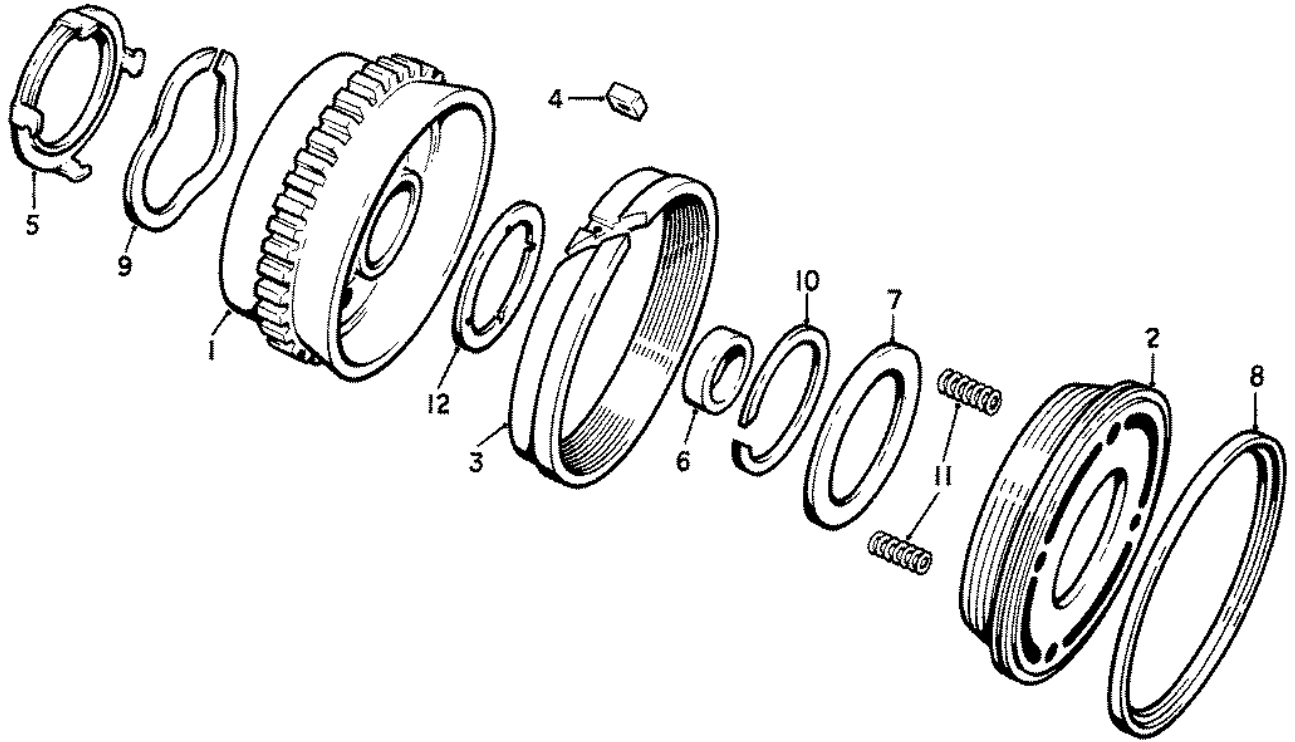
(MODIFICATION No. 26 IS INCORPORATED—2 LOCATING HOLES IN THE ROTATING CLUTCH CONE AND REVERSE ANNULUS GEAR FOR RETAINING PLATE)



Ref.	Part No.	Description	No. off
(1)	UG.1416	CONE, CLUTCH, ROTATING AND REVERSE ANNULUS GEAR—ASSY.	1
(2)	UG.1412	CONE, inner	1
(3)	UG.1413	CONE, outer	1
(4)	UG.224	KEY, outer cone	1
(5)	UG.329	PLATE, retaining,	1
(6)	UG.283	RING, distance, planet carrier	1
(7)	UG.335	RING, retaining, inner cone	1
(8)	UG.144	RING, sealing, outer	1
(9)	UG.325	RING, split, waved	1
(10)	UG.227	RING, spring, inner cone	1
(11)	UG.334	SPRING, inner cone	6
(12)	UG.1216	WASHER, thrust, reverse gear	1

REVERSE ANNULUS GEAR AND CLUTCH CONE

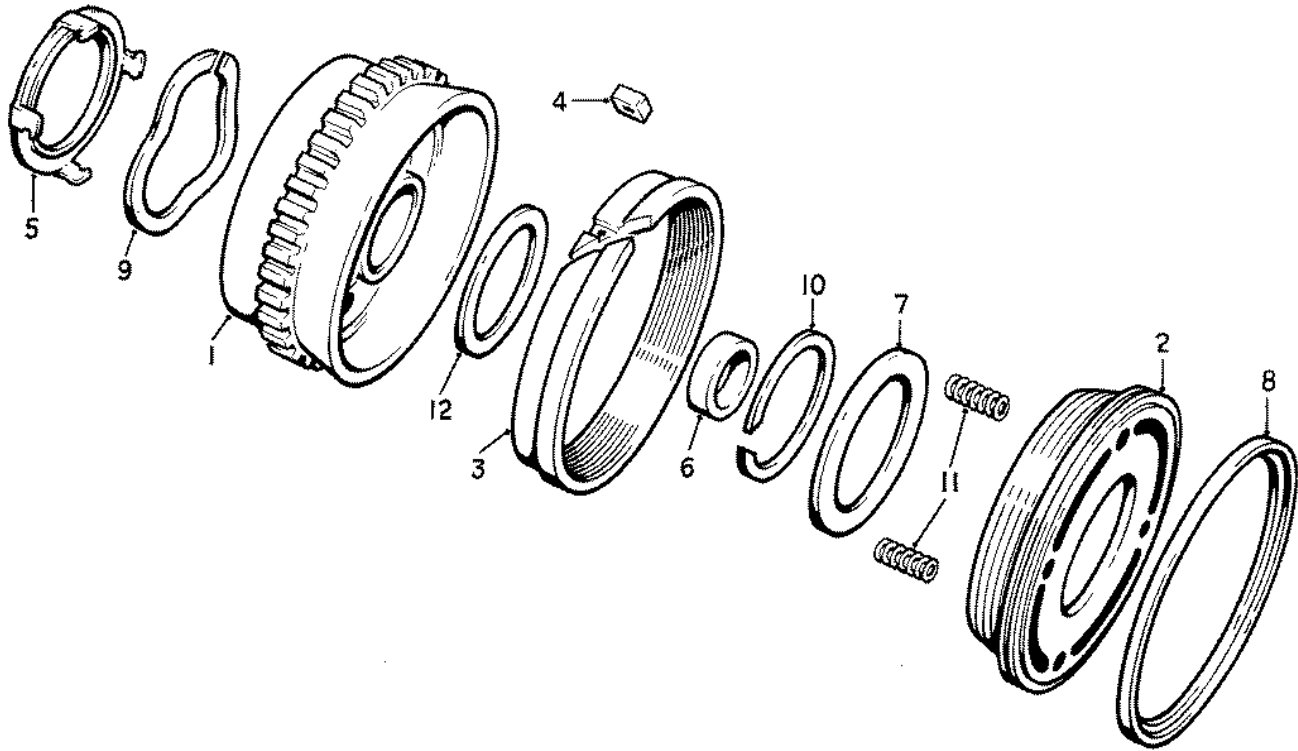
(MODIFICATION No. 26 IS INCORPORATED—2 LOCATING HOLES IN THE ROTATING CLUTCH CONE AND REVERSE ANNULUS GEAR FOR RETAINING PLATE)



Ref.	Part No.	Description	No. off
(1)	UG.1809	CONE, CLUTCH, ROTATING AND REVERSE ANNULUS GEAR—ASSY.	1
(2)	UG.1412	Cone, inner	1
(3)	UG.1413	Cone, outer	1
(4)	UG.224	Key, outer cone	1
(5)	UG.1704	Plate, retaining, gear	1
(6)	UG.283	Ring, distance, planet carrier	1
(7)	UG.335	Ring, retaining, inner cone	1
(8)	UG.144	Ring, sealing, outer	1
(9)	UG.325	Ring, split, waved	1
(10)	UG.227	Ring, spring, inner cone	1
(11)	UG.334	Spring, inner	6
(12)	UG.340	Washer, thrust, reverse gear	1

REVERSE ANNULUS GEAR AND CLUTCH CONE

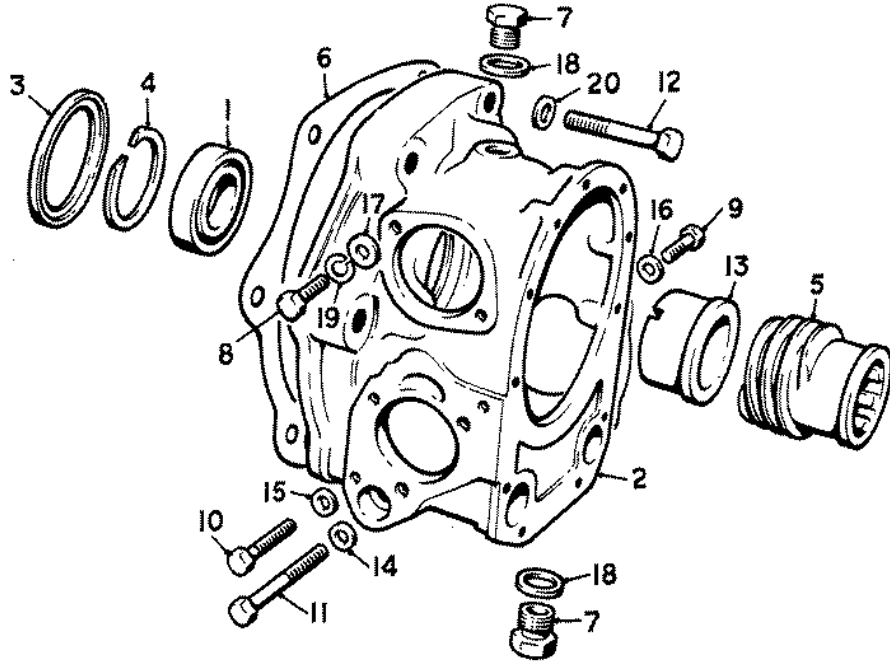
(MODIFICATION No. 26 IS INCORPORATED—4 LOCATING HOLES IN THE ROTATING CLUTCH CONE REVERSE AND ANNULUS GEAR FOR RETAINING PLATE)



Ref.	Part No.	Description	No. off
(1)	UG.1809	CONE, CLUTCH, ROTATING AND REVERSE ANNULUS GEAR—ASSY.	1
(2)	UG.1412	Cone, inner	1
(3)	UG.1413	Cone, outer	1
(4)	UG.224	Key, outer cone	1
(5)	UG.1704	PLATE, retaining	1
(6)	UG.283	Ring, distance, planet carrier	1
(7)	UG.335	Ring, retaining, inner cone	1
(8)	UG.144	Ring, sealing, outer	1
(9)	UG.325	Ring, split, waved	1
(10)	UG.227	Ring, spring, inner	1
(11)	UG.334	Spring, inner cone	6
(12)	UG.1216	WASHER, thrust, reverse gear	1

REVERSE ANNULUS GEAR AND CLUTCH CONE

(MODIFICATION No. 26 IS INCORPORATED—4 LOCATING HOLES IN THE ROTATING CLUTCH CONE AND REVERSE ANNULUS GEAR FOR RETAINING PLATE)



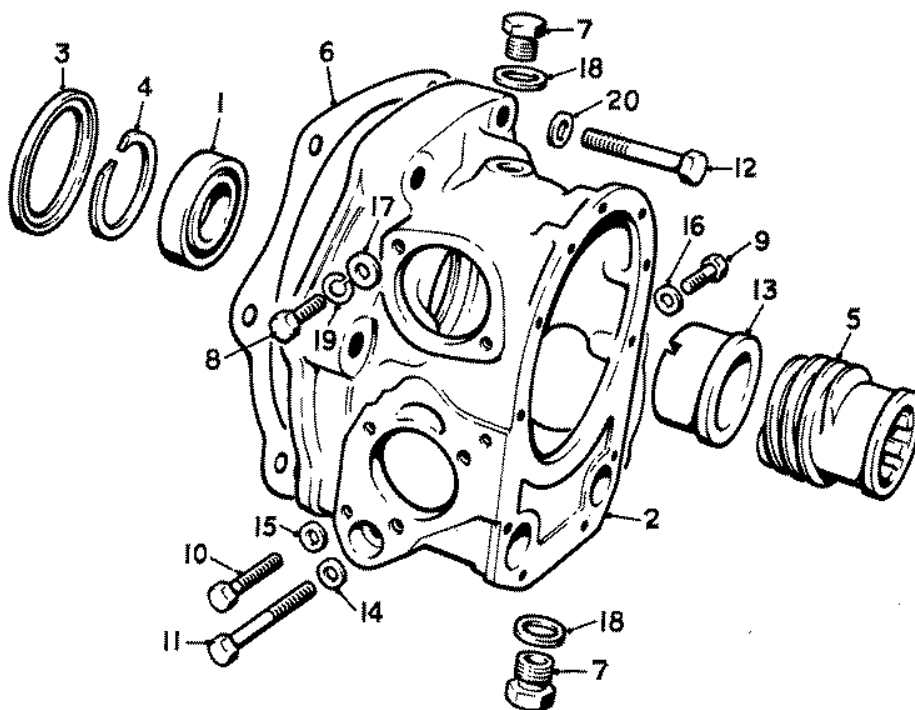
Ref.	Part No.	Description	No. off
(1)	UG.206	BEARING, ball, front	1
(2)	RG.8060	CASING, REAR EXTENSION—ASSY.	1
(3)	UG.148	RING, sealing, inner	1
(4)	UG.306	RING, spring, ball bearing	1
(5)	RG.8315	GEAR, worm, output shaft	1
(6)	UG.146	JOINT, gearbox to rear extension	1
(7)	UA.1157/Z	PLUG, blanking, casing	2
(8)	UA.104/Z	SCREW, drive housing	2
(9)	UA.105/Z	SCREW, servo drive end cover	4
(10)	UA.106/Z	SCREW, intermediate plate	2
(11)	UA.112/Z	SCREW, damper pump	4
(12)	UA.213/Z	SCREW, casing to gearbox	5
(13)	RG.7223	SLEEVE, output shaft	1
	RG.8181	WASHER, screw, pump casing	4
	RG.8181	WASHER, screw, intermediate plate For use when intermediate plate RG.8046 or RG.8442 is fitted.	2
(14)	RG.8181	WASHER, screw, pump casing	8
(15)	RG.8181	WASHER, screw, intermediate For use when intermediate plate RG.8433, RG.8434 or RG.8435 is fitted.	4
(16)	RG.8181	WASHER, screw, end cover	4
(17)	RG.8181	WASHER, screw, speedo-drive	2
(18)	KB.1079	WASHER, joint, blanking plug	2
(19)	K.9008/Z	WASHER, screw, speedo-drive	2
(20)	K.9010/Z	WASHER, screw, casing to gearbox	5

See Servo Drive

See Servo Drive

GEARBOX REAR EXTENSION

(CAST IRON EXTENSION—2 START WORM GEAR)



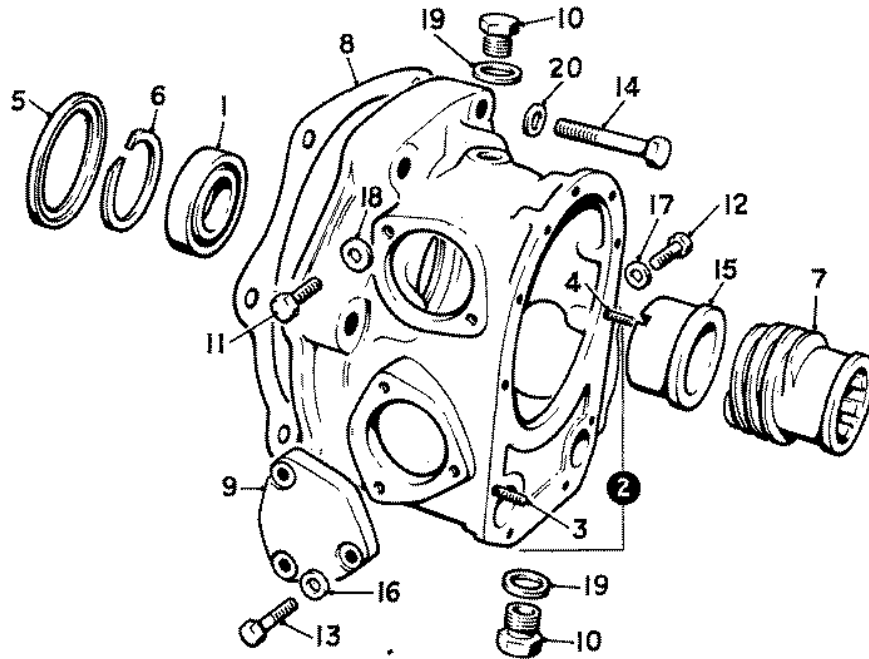
Ref.	Part No.	Description	No. off
(1)	UG.206	BEARING, ball, front	1
(2)	RG.8060	CASING, REAR EXTENSION—ASSY.	1
(3)	UG.148	RING, sealing, inner	1
(4)	UG.306	RING, spring, ball bearing	1
(5)	RG.8015	GEAR, worm, output shaft	1
(6)	UG.146	JOINT, casing to rear extension	1
(7)	UA.1157/Z	PLUG, blanking,	2
(8)	UA.104/Z	SCREW, speedo-drive housing	2
(9)	UA.105/Z	SCREW, servo drive end cover	4
(10)	UA.106/Z	SCREW, intermediate plate	2
(11)	UA.112/Z	SCREW, damper pump	4
(12)	UA.213/Z	SCREW, casing to gearbox	5
(13)	RG.7223	SLEEVE, output shaft	1
	RG.8181	WASHER, screw, pump casing	4
	RG.8181	WASHER, screw, intermediate plate For use when intermediate plate RG.8046 or RG.8442 is fitted.	2
(14)	RG.8181	WASHER, screw, pump casing	8
(15)	RG.8181	WASHER, screw, intermediate plate For use when intermediate plate RG.8433, RG.8434 or RG.8435 is fitted.	4
(16)	RG.8181	WASHER, screw, end cover	4
(17)	RG.8181	WASHER, screw, speedo-drive housing	2
(18)	KB.1079	WASHER, joint, blanking plug	2
(19)	K.9008/Z	WASHER, screw, speedo-drive housing	2
(20)	K.9010/Z	WASHER, screw, casing to gearbox	5

See Servo Drive

See Servo Drive

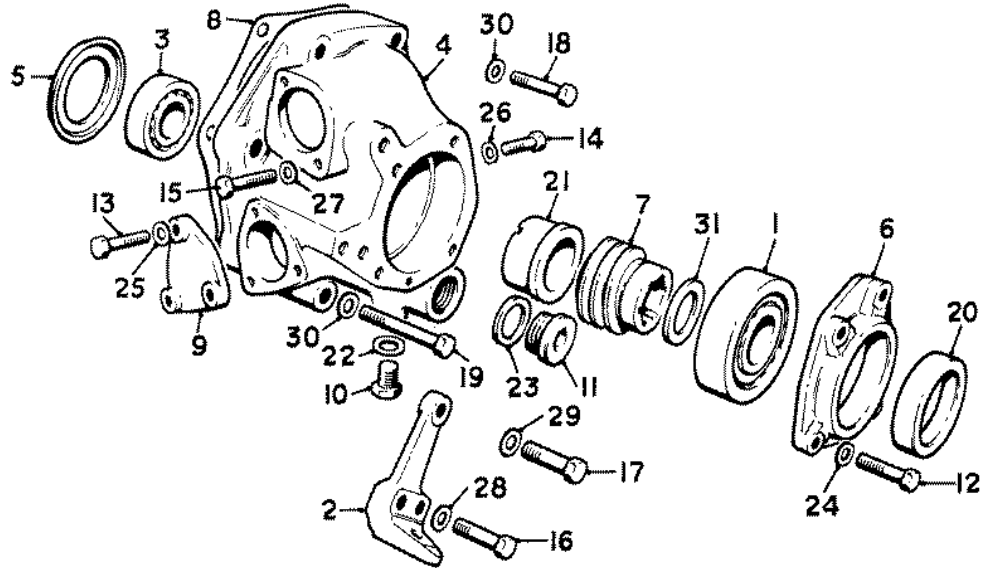
GEARBOX REAR EXTENSION
(CAST IRON EXTENSION—3 START WORM GEAR)

GEARBOX SERIES. C-PC.



Ref.	Part No.	Description	No. off
(1)	UG.206	BEARING, ball, front	1
(2)	UG.1834	CASING, REAR EXTENSION—ASSY.	1
(3)	UA.854/Z	Stud, end cover	2
(4)	UA.855/Z	Stud, gearbox to bracket	7
(5)	UG.148	RING, sealing, inner	1
(6)	UG.306	RING, spring, ball bearing	1
(7)	RG.8315	GEAR, worm, output shaft	1
(8)	UG.146	JOINT, gearbox to rear extension	1
(9)	UG.935	PLATE, blanking, servo	1
(10)	UA.1157/Z	PLUG, blanking casing	2
(11)	UA.105/Z	SCREW, speedometer drive	2
(12)	UA.105/Z	SCREW, servo drive end cover	4
(13)	UA.105/Z	SCREW, blanking plate	3
(14)	UA.213/Z	SCREW, casing to gearbox	5
(15)	RG.7223	SLEEVE, output shaft	1
(16)	UA.1251/Z	WASHER, screw, blanking plate	3
(17)	UA.1251/Z	WASHER, screw, end cover	4
(18)	UA.1251/Z	WASHER, screw, speedometer drive	2
(19)	KB.1079	WASHER, joint, blanking plugs	2
(20)	UR.2165	WASHER, screw, casing to gearbox	5

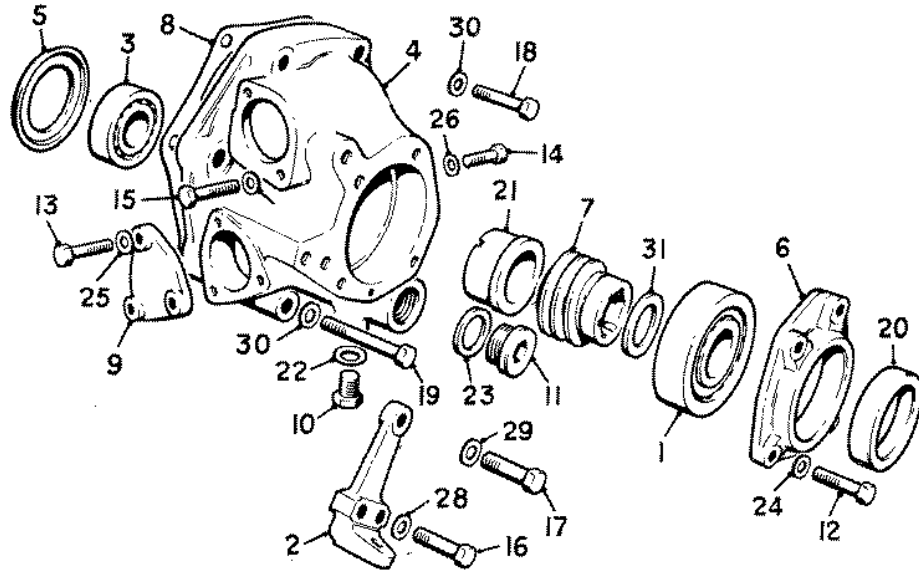
GEARBOX REAR EXTENSION
(ALUMINIUM EXTENSION—2 START WORM GEAR)



Ref.	Part No.	Description	No. off	Ref.	Part No.	Description	No. off
(1)	RE.22519	BEARING, ball, rear	1	(23)	KB.1093	WASHER, joint, blanking plug	1
	RE.22520	BEARING, ball, rear	1	(24)	UA.1251/Z	WASHER, screw, end cover	4
	RG.7230	BEARING, ball, rear	1	(25)	UA.1251/Z	WASHER, screw, blanking plate	3
			Alt.	(26)	UA.1251/Z	WASHER, screw, end cover	4
(2)	UG.2310	BRACKET, mounting	1	(27)	UA.1251/Z	WASHER, screw, speedo-drive housing	2
(3)	UG.206	BEARING, ball, front	1	(28)	UA.1252/Z	WASHER, screw, gearbox to bracket	1
(4)	UG.2121	CASING, REAR, EXTENSION—ASSY.	1	(29)	UR.2165	WASHER, screw, gearbox to bracket	2
(5)	UG.148	RING, sealing, inner	1	(30)	UR.2165	WASHER, screw, casing to gearbox	5
(6)	UG.1361	COVER, end	1	(31)		WASHER, adjusting	
(7)	UG.1331	GEAR, worm, output shaft	1	RG.6415		.040" thick] as reqd.
(8)	UG.146	JOINT, gearbox to rear casing	1	RG.6416		.045" thick	
(9)	UG.935	PLATE, blanking, servo drive	1	RG.6417		.050" thick	
(10)	UR.270	PLUG, blanking	1	RG.6418		.055" thick	
(11)	UG.526	PLUG, blanking	1	RG.6419		.060" thick	
(12)	UA.105/Z	SCREW, end cover	4	RG.6420		.065" thick	
(13)	UA.105/Z	SCREW, blanking plate	3	RG.6554		.070" thick	
(14)	UA.105/Z	SCREW, end cover	4	RG.6555		.075" thick	
(15)	UA.105/Z	SCREW, drive housing	2	RG.6556		.080" thick	
(16)	UA.156/Z	SCREW, gearbox to bracket	1	RG.6557		.085" thick	
(17)	UA.209/Z	SCREW, gearbox to bracket	2	RG.6558		.090" thick	
(18)	UA.213/Z	SCREW, casing to gearbox	4	RG.6559		.095" thick	
(19)	UG.2364	SCREW, casing to gearbox	1	RG.6560		.100" thick	
(20)	UG.1357	SEAL, oil	1	RG.6561		.105" thick	
(21)	RG.7223	SLEEVE, output shaft	1	RG.6562		.110" thick	
(22)	KB.1079	WASHER, joint, blanking plug	1	RG.6563		.115" thick	

GEARBOX REAR EXTENSION

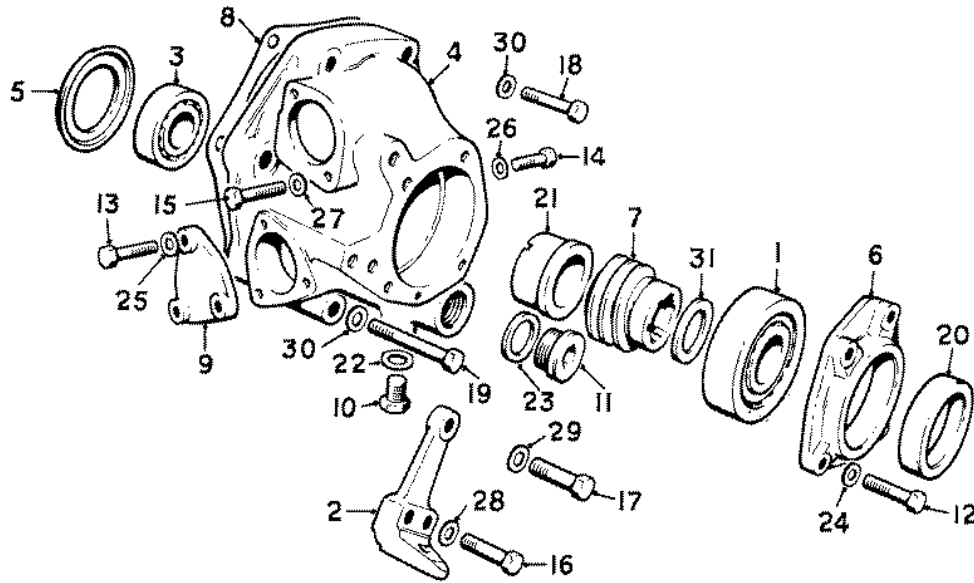
(ALUMINIUM EXTENSION—2 START WORM GEAR—
.4375" DIA. FIXING, GEARBOX MOUNTING BRACKET TO
FRAME)



Ref.	Part No.	Description	No. off	Ref.	Part No.	Description	No. off
(1)	RE.22519	BEARING, ball, rear	1	(23)	KB.1093	WASHER, joint, blanking plug	1
	RE.22520	BEARING, ball, rear	1	(24)	UA.1251/Z	WASHER, screw, end cover	4
	RG.7230	BEARING, ball, rear	1	(25)	UA.1251/Z	WASHER, screw, blanking plate	3
			Alt.	(26)	UA.1251/Z	WASHER, screw, end cover	4
(2)	UG.2120	BRACKET, mounting	1	(27)	UA.1251/Z	WASHER, screw, speedo-drive housing	2
(3)	UG.206	BEARING, ball, front	1	(28)	UA.1252/Z	WASHER, screw, gearbox to bracket	1
(4)	UG.2121	CASING, REAR, EXTENSION—ASSY.	1	(29)	UR.2165	WASHER, screw, gearbox to bracket	2
(5)	UG.148	RING, sealing, inner	1	(30)	UR.2165	WASHER, screw, casing to gearbox	5
(6)	UG.1361	COVER, end	1	(31)		WASHER, adjusting	
(7)	UG.1358	GEAR, worm, output shaft	1	RG.6415		.040" thick	
(8)	UG.146	JOINT, gearbox to rear casing	1	RG.6416		.045" thick	
(9)	UG.935	PLATE, blanking, servo drive	1	RG.6417		.050" thick	
(10)	UR.270	PLUG, blanking	1	RG.6418		.055" thick	
(11)	UG.526	PLUG, blanking	1	RG.6419		.060" thick	
(12)	UA.105/Z	SCREW, end cover	4	RG.6420		.065" thick	
(13)	UA.105/Z	SCREW, blanking plate	3	RG.6554		.070" thick	1
(14)	UA.105/Z	SCREW, end cover	4	RG.6555		.075" thick	as
(15)	UA.105/Z	SCREW, hex. head, .250" UNF/2A, speedo-drive housing	2	RG.6556		.080" thick	reqd.
				RG.6557		.085" thick	
(16)	UA.156/Z	SCREW, gearbox to bracket	1	RG.6558		.090" thick	
(17)	UA.209/Z	SCREW, gearbox to bracket	2	RG.6559		.095" thick	
(18)	UA.213/Z	SCREW, casing to gearbox	4	RG.6560		.100" thick	
(19)	UG.2364	SCREW, casing to gearbox	1	RG.6561		.105" thick	
(20)	UG.1357	SEAL, oil	1	RG.6562		.110" thick	
(21)	RG.7223	SLEEVE, output shaft	1	RG.6563		.115" thick	
(22)	KB.1079	WASHER, joint, blanking plug	1				

GEARBOX REAR EXTENSION

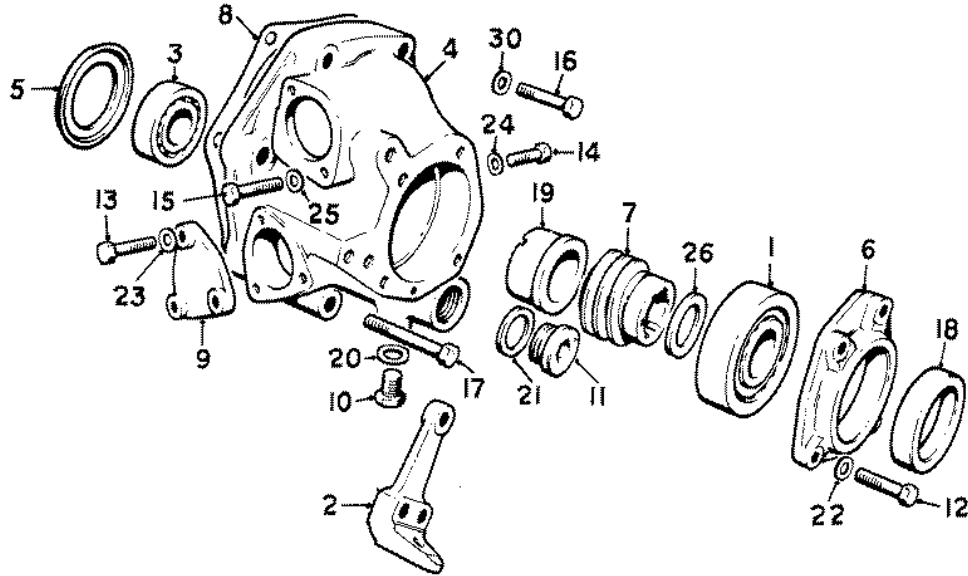
(ALUMINIUM EXTENSION—3 START WORM GEAR—
.375" DIA. FIXING, GEARBOX MOUNTING BRACKET TO
FRAME)



Ref.	Part No.	Description	No. off	Ref.	Part No.	Description	No. off
(1)	RE.22519	BEARING, ball, rear	1	(23)	KB.1093	WASHER, joint, blanking plug	1
	RE.22520	BEARING, ball, rear	1	(24)	UA.1251/Z	WASHER, screw, end cover	4
	RG.7230	BEARING, ball, rear	1	(25)	UA.1251/Z	WASHER, screw, servo blanking plate	3
			Alt.	(26)	UA.1251/Z	WASHER, screw, servo drive cover	4
(2)	UG.2310	BRACKET, mounting gearbox	1	(27)	UA.1251/Z	WASHER, screw, speedometer drive	2
(3)	UG.206	BEARING, ball, front	1	(28)	UA.1252/Z	WASHER, screw, gearbox	1
(4)	UG.2121	CASING, REAR, EXTENSION—ASSY.	1	(29)	UR.2165	WASHER, screw, gearbox	2
(5)	UG.148	RING, sealing, inner	1	(30)	UR.2165	WASHER, screw, rear casing	5
(6)	UG.1361	COVER, end	1	(31)		WASHER, adjusting, worm gear	
(7)	UG.1358	GEAR, worm, output shaft	1	RG.6415		.040" thick	
(8)	UG.146	JOINT, gearbox to rear extension	1	RG.6416		.045" thick	
(9)	UG.935	PLATE, blanking, servo drive	1	RG.6417		.050" thick	
(10)	UR.270	PLUG, blanking, casing	1	RG.6418		.055" thick	
(11)	UG.526	PLUG, blanking, rear casing	1	RG.6419		.060" thick	
(12)	UA.105/Z	SCREW, end cover	4	RG.6420		.065" thick	
(13)	UA.105/Z	SCREW, servo blanking plate	3	RG.6554		.070" thick	
(14)	UA.105/Z	SCREW, servo drive end cover	4	RG.6555		.075" thick	
(15)	UA.105/Z	SCREW, speedometer drive	2	RG.6556		.080" thick	
(16)	UA.156/Z	SCREW, gearbox to bracket	1	RG.6557		.085" thick	
(17)	UA.209/Z	SCREW, gearbox to bracket	2	RG.6558		.090" thick	
(18)	UA.213/Z	SCREW, rear casing to gearbox	4	RG.6559		.095" thick	
(19)	UG.2364	SCREW, rear casing to gearbox	1	RG.6560		.100" thick	
(20)	UG.1357	SEAL, oil	1	RG.6561		.105" thick	
(21)	RG.7223	SLEEVE, output shaft	1	RG.6562		.110" thick	
(22)	KB.1079	WASHER, joint, blanking plug	1	RG.6563		.115" thick	

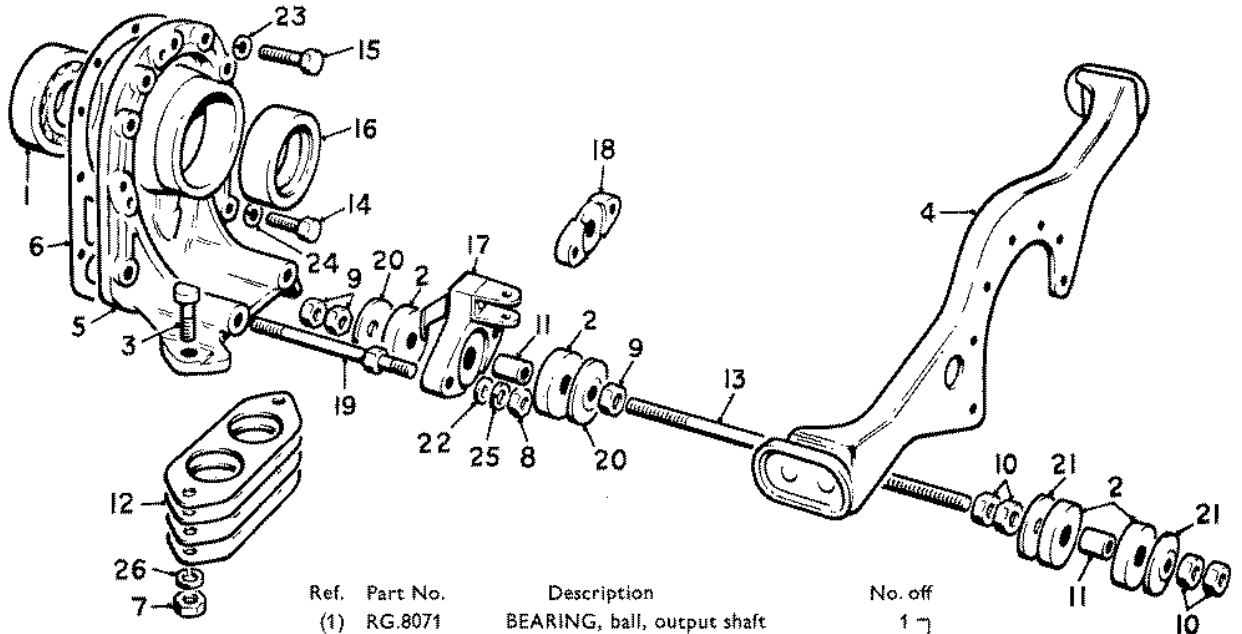
GEARBOX REAR EXTENSION

(ALUMINIUM EXTENSION—3 START WORM GEAR—
.4375" DIA. FIXING, GEARBOX MOUNTING BRACKET TO
FRAME)



Ref.	Part No.	Description	No. off	Ref.	Part No.	Description	No. off
(1)	RE.22519	BEARING, ball, rear	1	(21)	KB.1093	WASHER, joint, blanking plug	1
	RE.22520	BEARING, ball, rear	1	(22)	UA.1251/Z	WASHER, screw, end cover	4
	RG.7230	BEARING, ball, rear	1	(23)	UA.1251/Z	WASHER, screw, servo blanking plate	3
			Alt.	(24)	UA.1251/Z	WASHER, screw, servo drive cover	4
(2)	UG.2310	BRACKET, mounting gearbox	1	(25)	UA.1251/Z	WASHER, screw, speedometer drive	2
(3)	UG.206	BEARING, ball, front	1	(26)		WASHER, adjusting, worm gear	1
(4)	UG.3611	CASING, REAR, EXTENSION—ASSY.	1	RG.6415		.040" thick] as reqd.
(5)	UG.148	RING, sealing, inner	1	RG.6416		.045" thick	
(6)	UG.1361	COVER, end	1	RG.6417		.050" thick	
(7)	UG.1358	GEAR, worm, output shaft	1	RG.6418		.055" thick	
(8)	UG.146	JOINT, gearbox to rear extension	1	RG.6419		.060" thick	
(9)	UG.935	PLATE, blanking, servo drive	1	RG.6420		.065" thick	
(10)	UR.270	PLUG, blanking, casing	1	RG.6554		.070" thick	
(11)	UG.526	PLUG, blanking, rear casing	1	RG.6555		.075" thick	
(12)	UA.105/Z	SCREW, end cover	4	RG.6556		.080" thick	
(13)	UA.105/Z	SCREW, servo blanking plate	3	RG.6557		.085" thick	
(14)	UA.105/Z	SCREW, servo drive end cover	4	RG.6558		.090" thick	
(15)	UA.105/Z	SCREW, speedometer drive	2	RG.6559		.095" thick	
(16)	UA.213/Z	SCREW, rear casing to gearbox	4	RG.6560		.100" thick	
(17)	UG.2364	SCREW, rear casing to gearbox	1	RG.6561		.105" thick	
(18)	UG.1357	SEAL, oil	1	RG.6562		.110" thick	
(19)	RG.7223	SLEEVE, output shaft	1	RG.6563		.115" thick	
(20)	KB.1079	WASHER, joint, blanking plug	1				

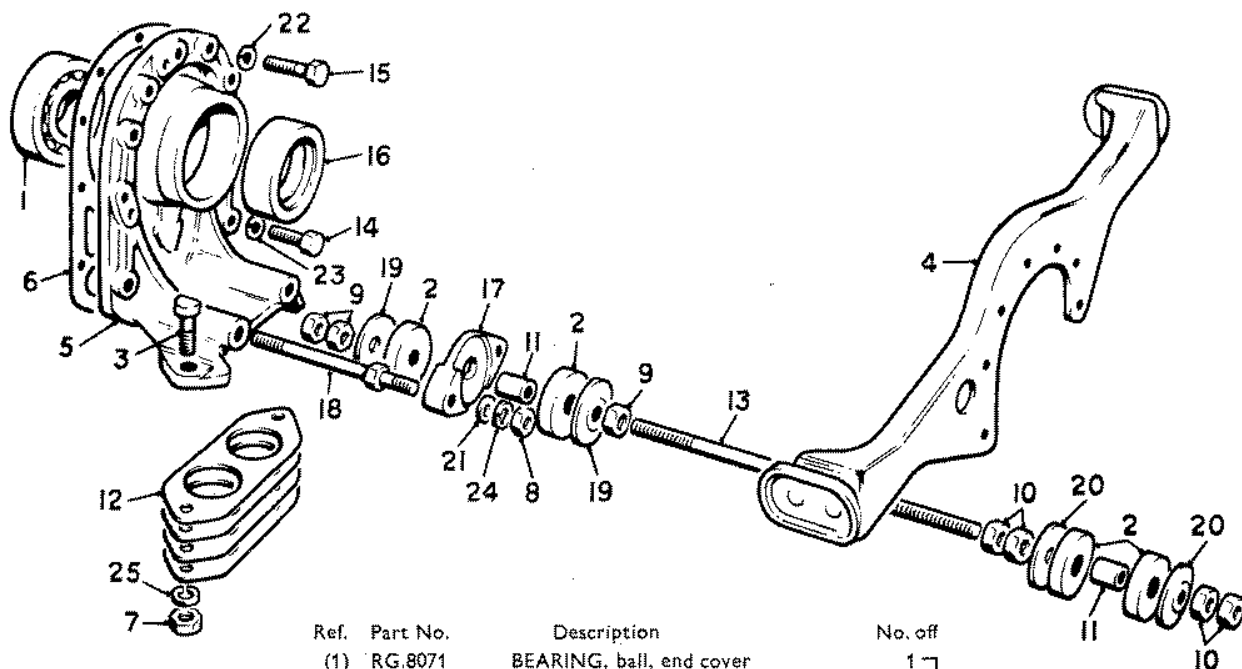
GEARBOX REAR EXTENSION
ALUMINIUM EXTENSION—3 START WORM GEAR



Ref.	Part No.	Description	No. off
(1)	RG.8071	BEARING, ball, output shaft	1
	RG.8072	BEARING, ball, output shaft	1
	RG.8205	BEARING, ball, output shaft	1
		Alt.	
(2)	RG.3428	BLOCK, rubber, tie rod	4
(3)	KB.10862/Z	BOLT, Special, end cover to chassis	2
(4)	RG.174A	BRACKET, GEARBOX TO CHASSIS ASSY.	1
(5)	RG.8304	COVER, end	1
(6)	RG.8286	JOINT, casing to end cover	1
(7)	K.4313/Z	NUT, bolt, end cover	2
(8)	UA.352/Z	NUT, stud, tie rod	2
(9)	K.4316/Z	NUT, screw, tie rod	3
(10)	K.4316/Z	NUT, tie rod and rear rubbers	4
(11)	RG.3429	PIECE, distance, rubber blocks	2
(12)	GB.5266	PLATE, packing, end cover	4
(13)	RG.3430	ROD, tie, gearbox	1
(14)	UA.105/Z	SCREW, end cover to casing	2
(15)	UA.107/Z	SCREW, end cover bracket	7
(16)	RG.7298	SEAL, oil, rear	1
(17)	RG.8170	SEATING, tie rod	1
		Right-hand drive only	
(18)	RG.3427	SEATING, tie rod	1
		Left-hand drive only	
(19)	UG.457	STUD, end cover	2
(20)	F.88553	WASHER, clamping, tie rod front	2
(21)	F.88553	WASHER, clamping, tie rod rear	2
(22)	K.4410/Z	WASHER, screw, tie rod front	2
(23)	K.9008/Z	WASHER, screw, end cover	7
(24)	K.9008/Z	WASHER, screw, end cover to casing	2
(25)	K.9009/Z	WASHER, stud, tie rod front	2
(26)	K.9009/Z	WASHER, bolt, end cover	2

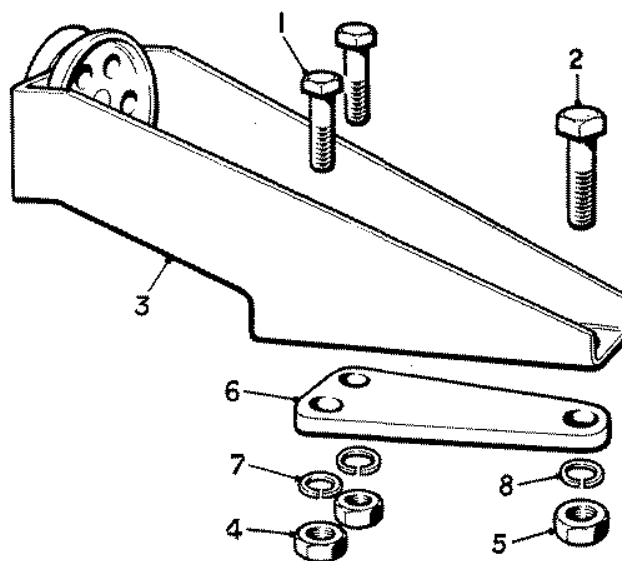
REAR GEARBOX MOUNTING

GEARBOX SERIES. C. C-C. C-E. C-EB. C-P. C-PC.



Ref.	Part No.	Description	No. off
(1)	RG.8071	BEARING, ball, end cover	1
	RG.8072	BEARING, ball, end cover	1
	RG.8205	BEARING, ball, end cover	1
		Alt.	
(2)	RG.3428	BLOCK, rubber, tie rod	4
(3)	KB.10862/Z	BOLT, Special, end cover to chassis	2
(4)	RG.174A	BRACKET, GEARBOX TO CHASSIS ASSY.	1
(5)	RG.8304	COVER, end	1
(6)	RG.8286	JOINT, casing to end cover	1
(7)	K.4313/Z	NUT, bolt, end cover	2
(8)	UA.352/Z	NUT, stud, tie rod	2
(9)	K.4316/Z	NUT, screw, tie rod	3
(10)	K.4316/Z	NUT, tie rod and rear rubbers	4
(11)	RG.3429	PIECE, distance, rubber blocks	2
(12)	GB.5266	PLATE, packing, end cover	4
(13)	RG.3430	ROD, tie, gearbox	1
(14)	UA.351/Z	SCREW, end cover to casing	2
(15)	UA.351/Z	SCREW, end cover bracket	7
(16)	RG.7298	SEAL, oil, rear	1
(17)	RG.3427	SEATING, tie rod	1
(18)	UG.1896	STUD, end cover	2
(19)	F.88553	WASHER, clamping, tie rod front	2
(20)	F.88553	WASHER, clamping, tie rod rear	2
(21)	K.4410/Z	WASHER, screw, tie rod front	2
(22)	K.9008/Z	WASHER, screw, end cover	7
(23)	K.9008/Z	WASHER, screw, end cover to casing	2
(24)	K.9009/Z	WASHER, stud, tie rod front	2
(25)	K.9009/Z	WASHER, bolt, end cover	2

REAR GEARBOX MOUNTING



Ref.	Part No.	Description	No. off
(1)	K.243/Z	BOLT, tie rod to chassis bracket	2
(2)	K.345/Z	BOLT, tie rod to chassis bracket	1
(3)	RG.8482	BRACKET, TIE ROD, ASSY.	1
(4)	K.4310/Z	NUT, bolt, tie rod	2
(5)	K.4313/Z	NUT, bolt, tie rod	1
(6)	RG.3434	PLATE, packing, rubber blocks	1
(7)	K.9008/Z	WASHER, bolt, tie rod	2
(8)	K.9009/Z	WASHER, bolt, tie rod	1

TIE ROD—CHASSIS MOUNTING BRACKET