

Section C7

**System test and  
fault diagnosis**

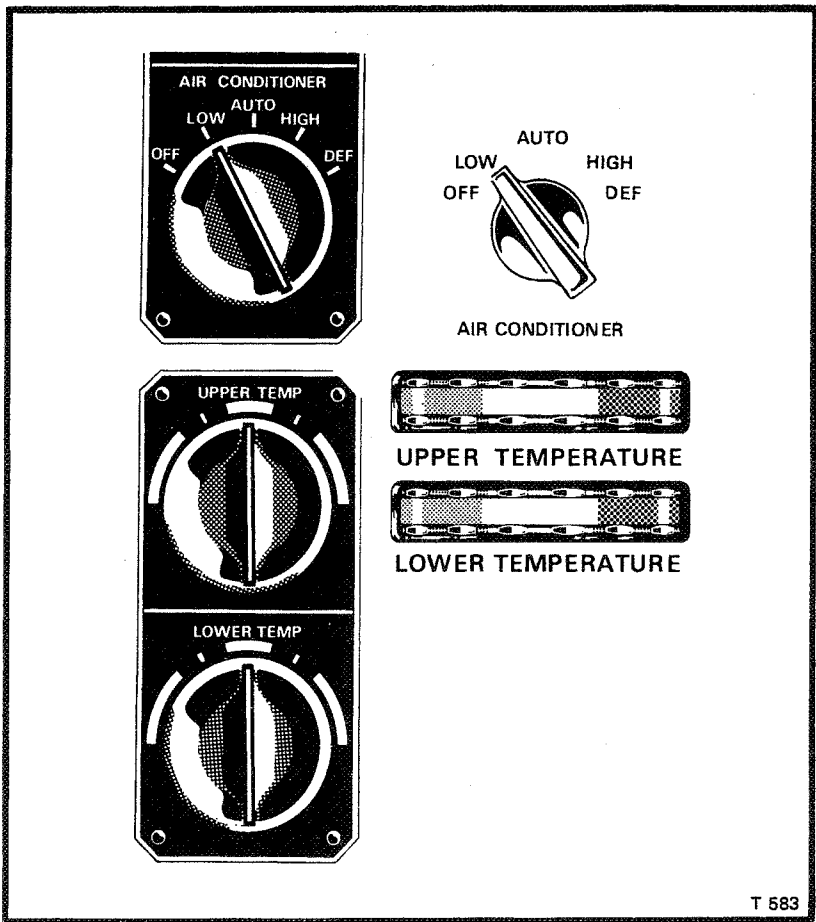
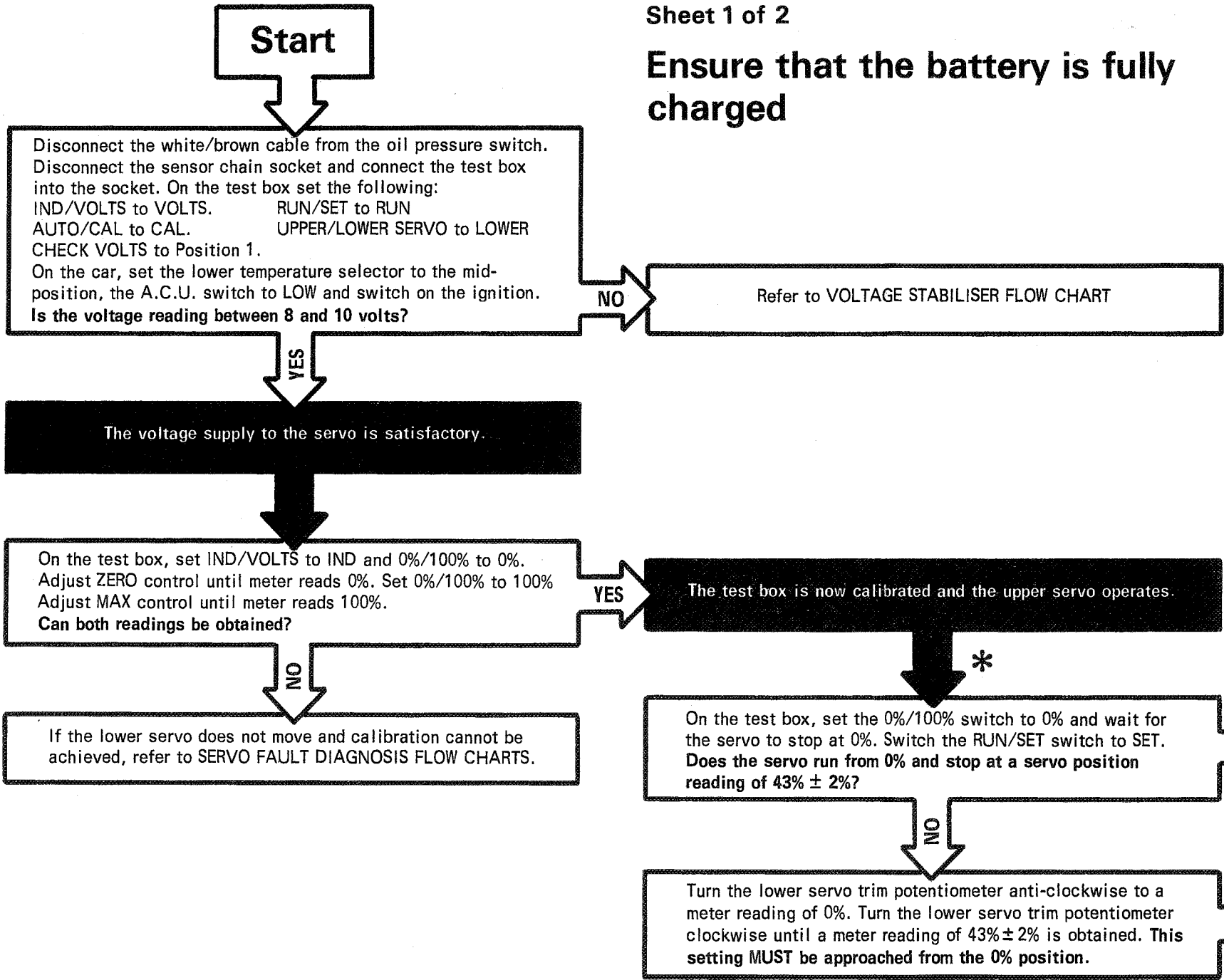
Lower servo test and calibration procedure

Sheet 1 of 2

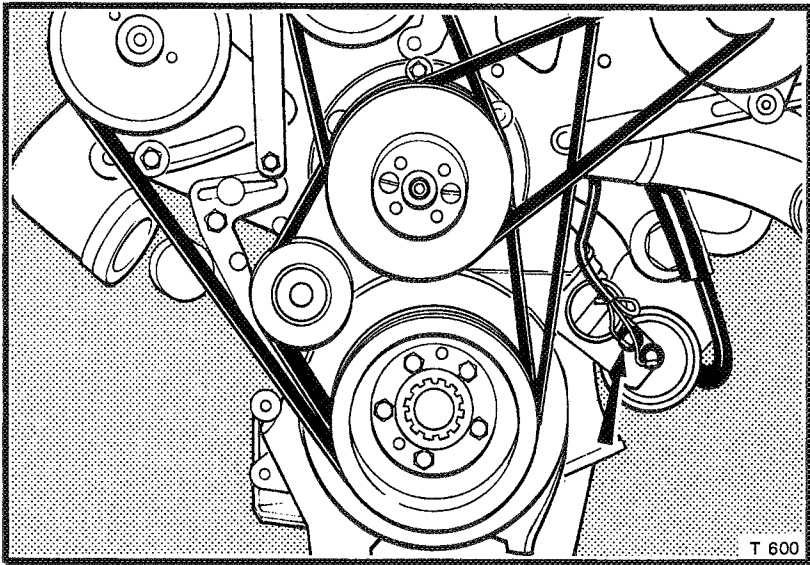
Fig. C53

Sheet 1 of 2

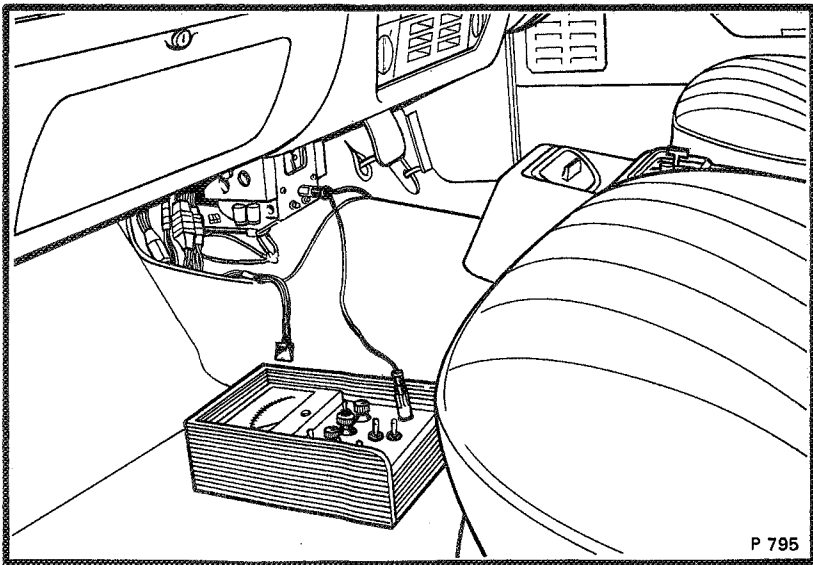
Ensure that the battery is fully charged



ACU switch settings



Oil pressure switch

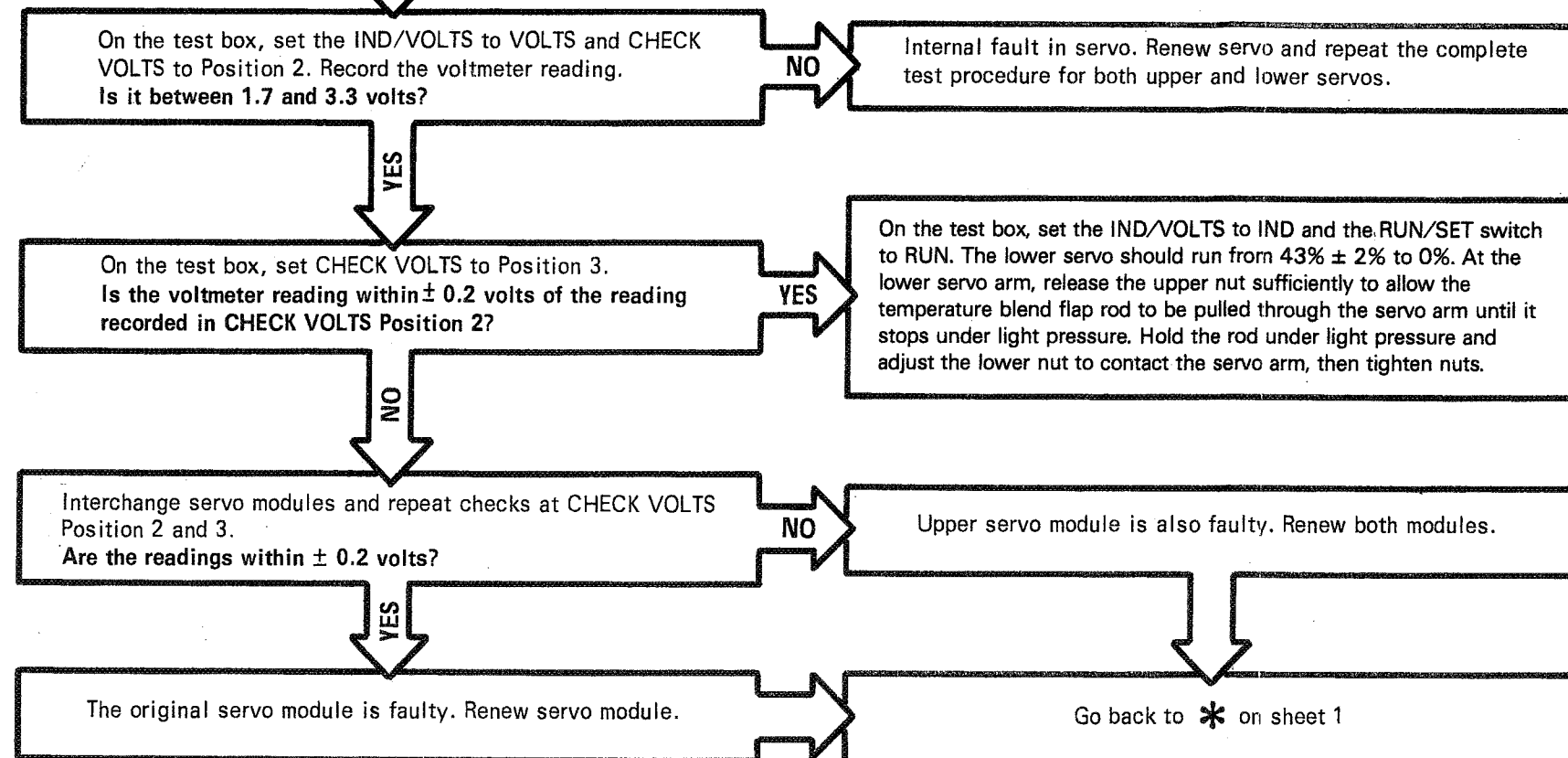


Test box connection

Go to sheet 2

These are landmarks. They show which part of the system has been proved correct.

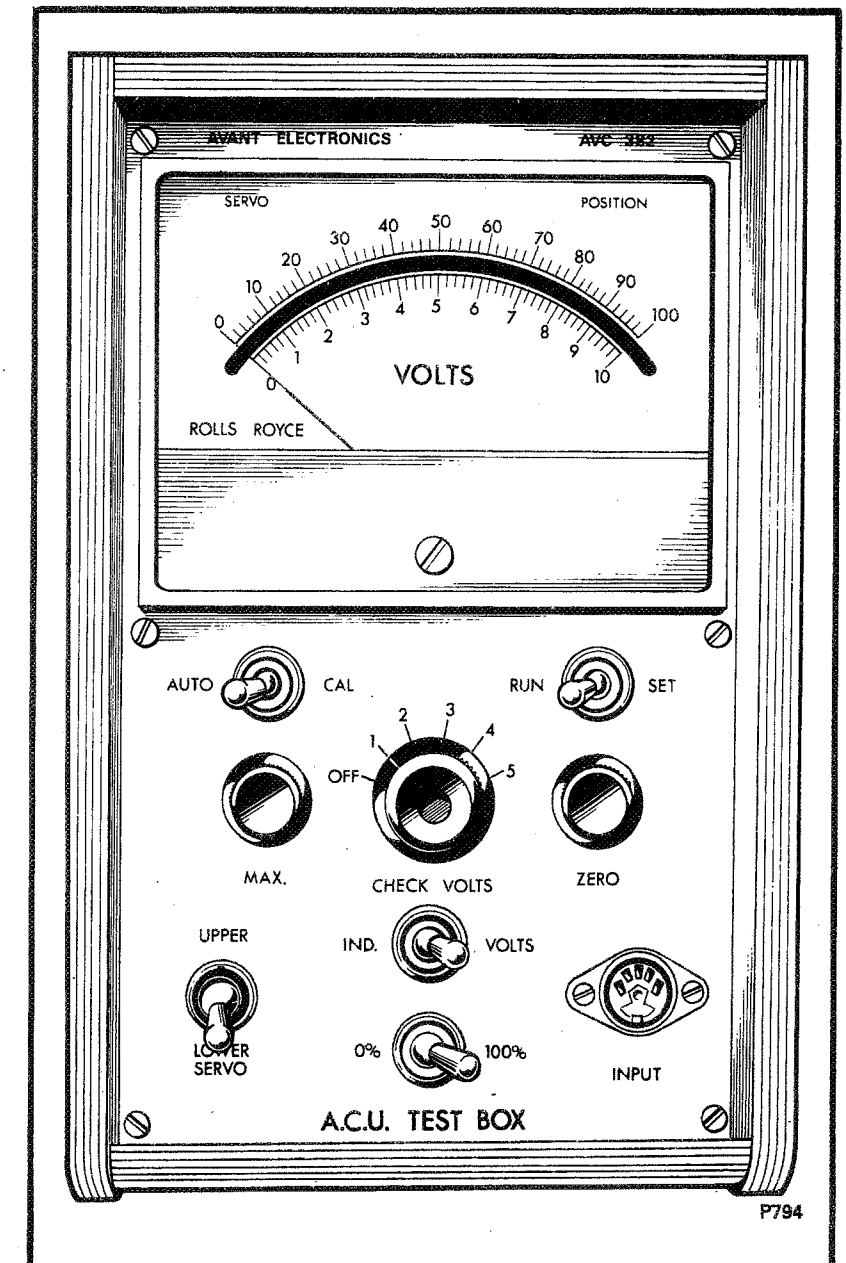
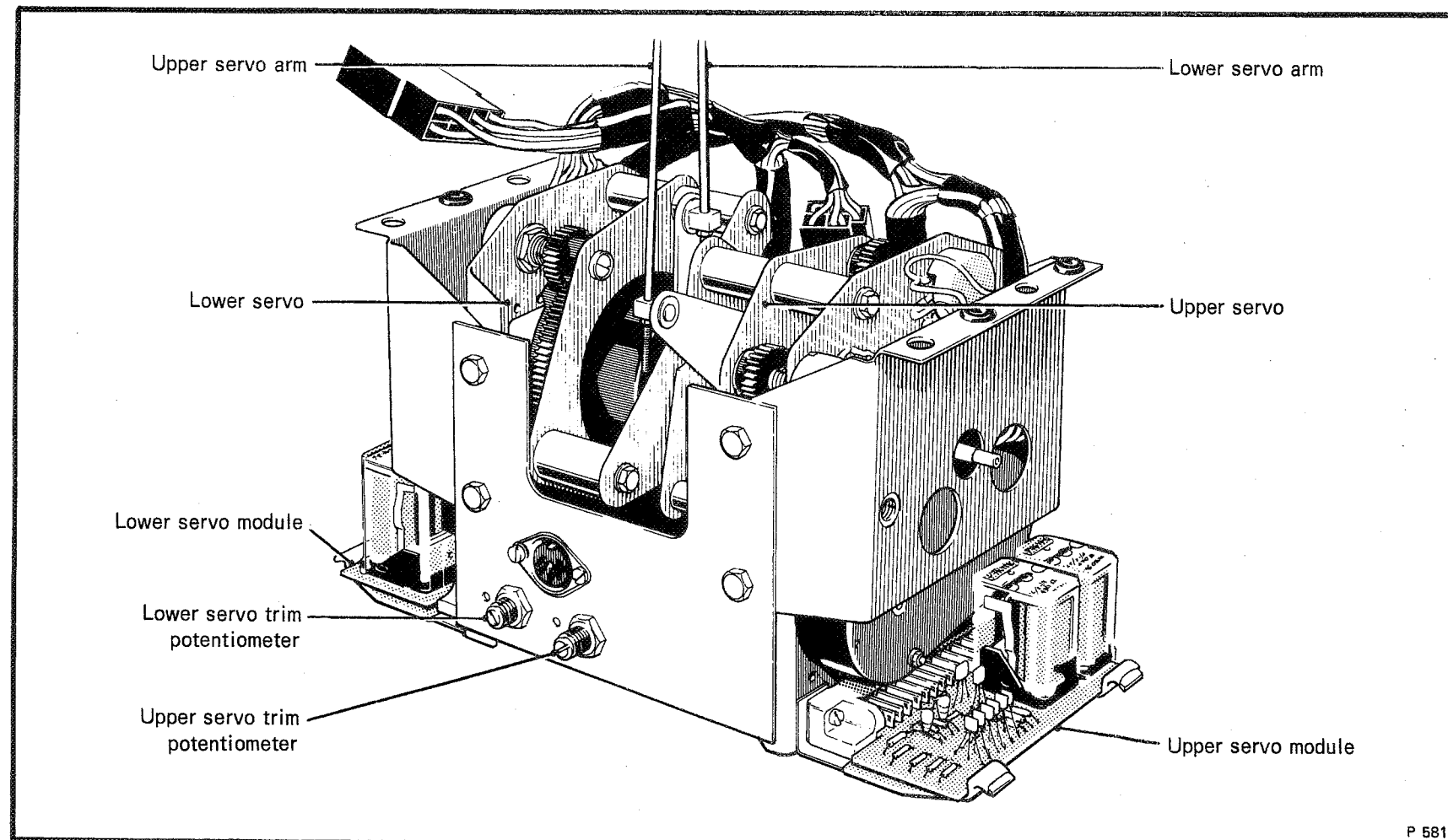
From sheet 1



These are landmarks. They show which part of the system has been proved correct.

The lower temperature blend flap is now correctly set

The lower servo and lower servo module are now proven to operate correctly from the test box. If a fault still exists, refer to the LOWER SENSOR CHAIN FAULT DIAGNOSIS



P794

Servo assembly

Section C7

**System test and  
fault diagnosis**

Lower servo test and calibration procedure

Sheet 2 of 2

Fig. C53 continued

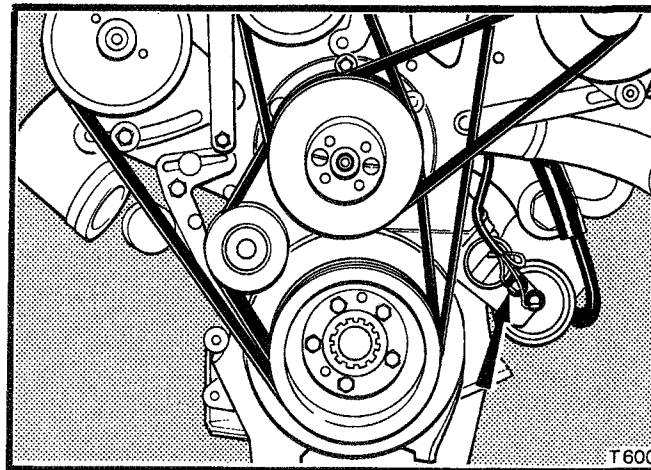
**Start**

Disconnect the white/brown cable from the oil pressure switch.  
Disconnect the sensor chain socket.  
Connect the test box into the servo test socket.

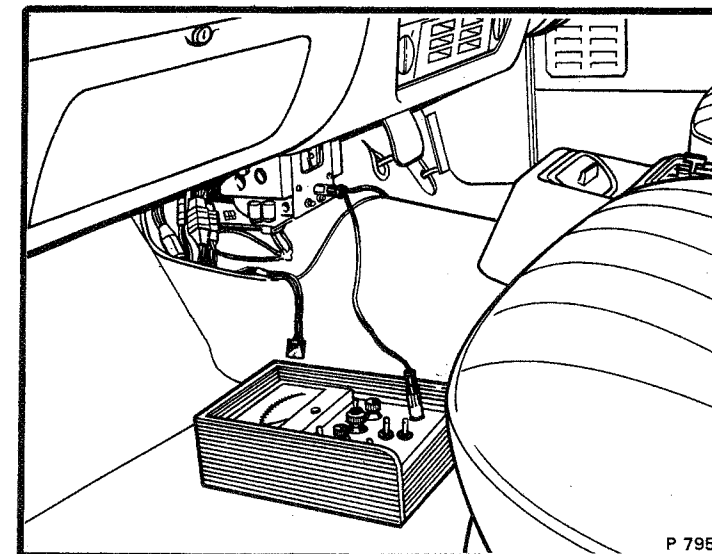
On the test box set the following:  
IND/VOLTS to IND. RUN/SET to RUN.  
AUTO/CAL to CAL. UPPER/LOWER SERVO to UPPER.  
CHECK VOLTS to Position 1.

On the car, set the upper temperature switch to the mid-position and the ACU switch to LOW. Switch on the ignition.

On the test box, set the 0%/100% switch to 0% and adjust ZERO control until meter indicates 0%. Set the 0%/100% switch to 100% and adjust MAX control until meter indicates 100%. Repeat both operations until both readings are correct.



Oil pressure switch



Test box connection

On the test box, set the RUN/SET switch to SET and the 0%/100% switch to 0%. Turn the upper servo trim potentiometer fully anti-clockwise and wait for the servo to stop. If the meter reading is not 0%, turn the upper temperature selector towards the minimum temperature position until 0% is obtained.

Checking the Recirculation Actuators

Go to sheet 2

Checking the Lower Quantity Actuator

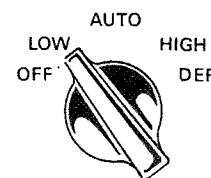
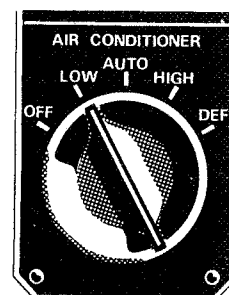
Go to sheet 3

Checking the Mode Flap Actuator and Rear Window Demist

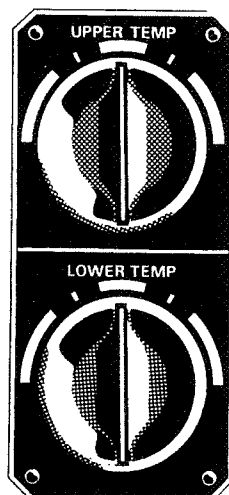
Go to sheet 4

Checking the Fans Inhibit Circuit.

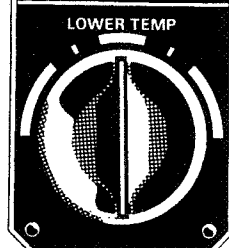
Go to sheet 6



AIR CONDITIONER



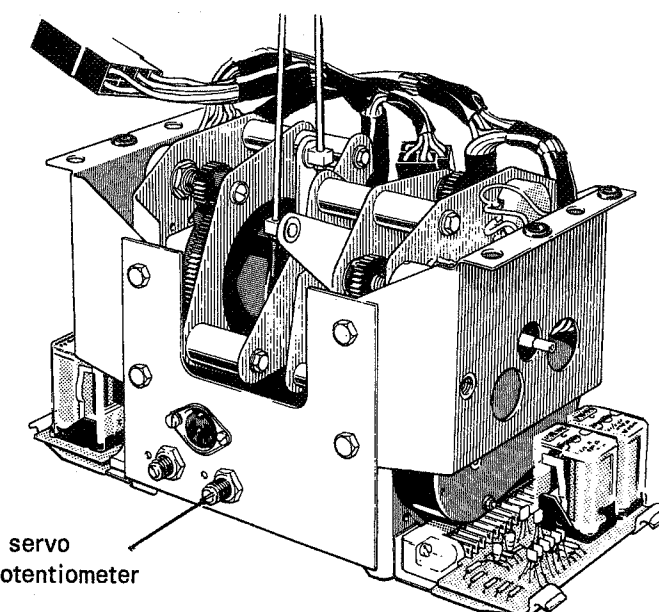
UPPER TEMPERATURE



LOWER TEMPERATURE

ACU switch settings

T 583



Upper servo trim potentiometer

Servo assembly

P 581