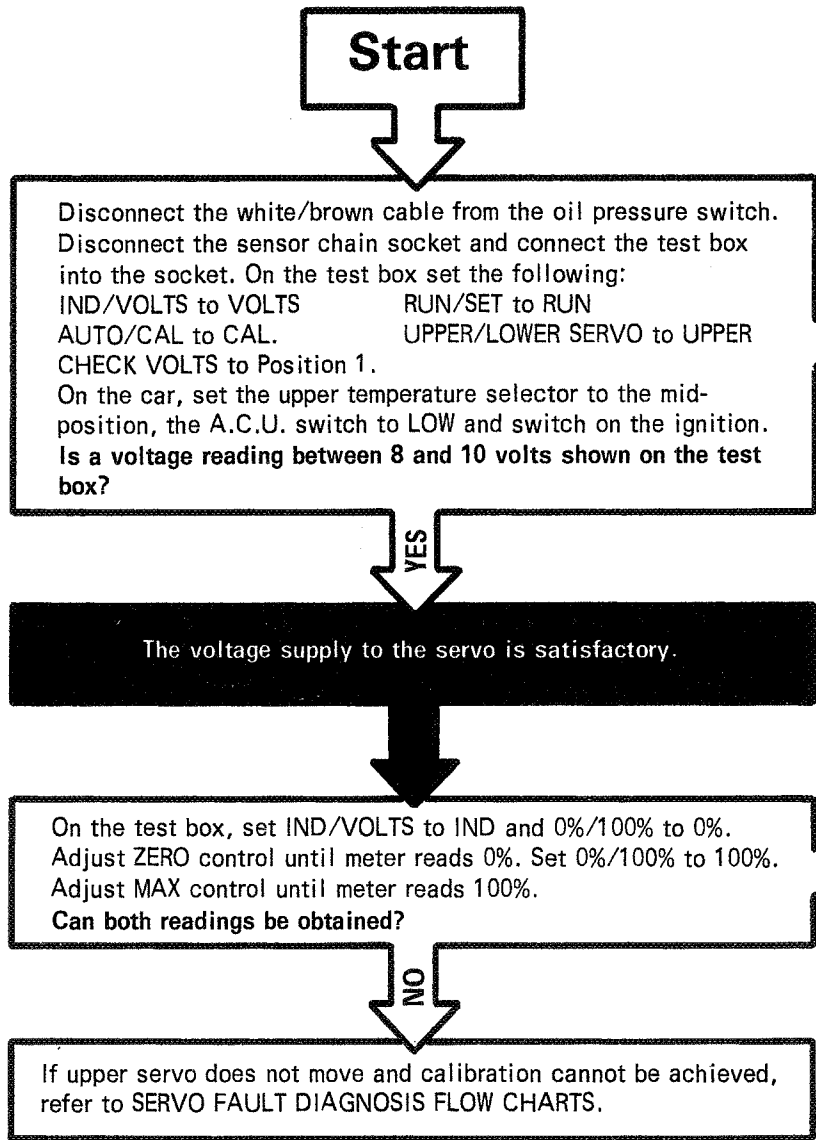


Section C7

**System test and
fault diagnosis**

Upper servo test and calibration procedure
Sheet 1 of 2
Fig. C52

Ensure that the battery is fully charged



NO

Refer to VOLTAGE STABILISER FLOW CHART.

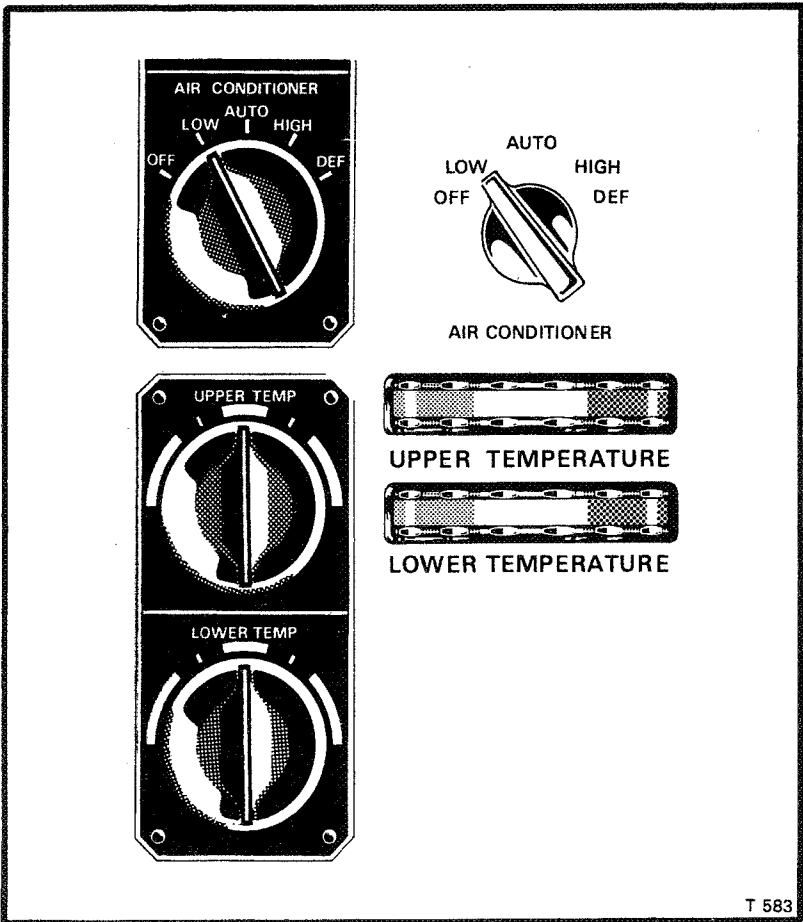
YES

The test box is now calibrated and the lower servo operates.

On the test box, set the 0%/100% switch to 0% and wait for servo to stop at 0%. Switch the RUN/SET switch to SET. Does the servo run from 0% and stop at a servo position reading of $51\% \pm 2\%$?

NO

Turn the upper servo trim potentiometer anti-clockwise to a meter reading of 0%. Turn the upper servo trim potentiometer clockwise until a meter reading of $51\% \pm 2\%$ is obtained. This setting **MUST** be approached from the 0% position.



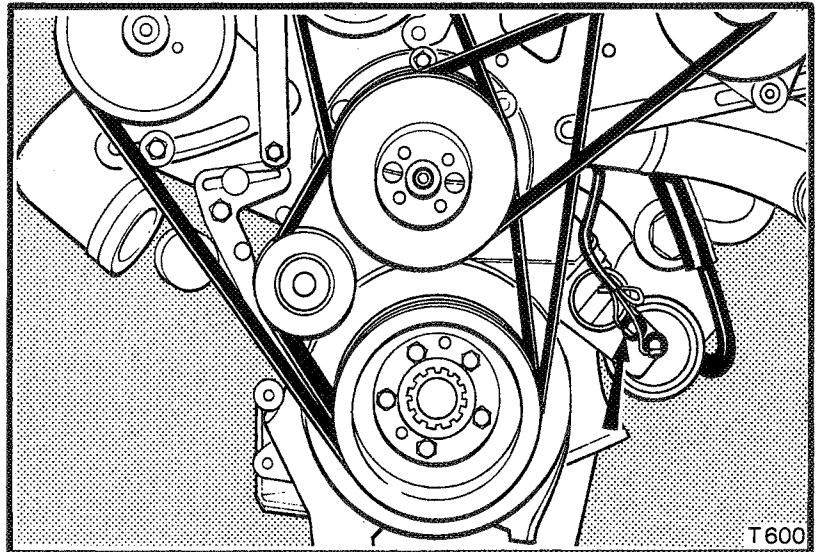
ACU Switch settings

YES

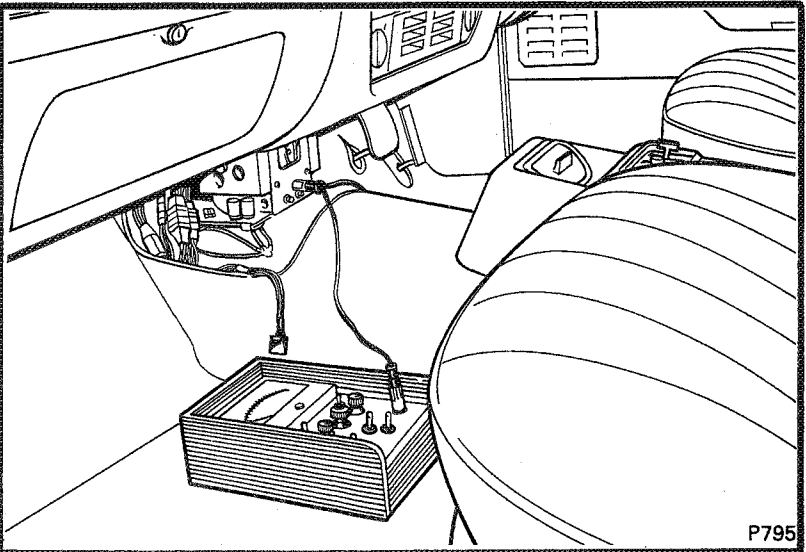
The upper servo is now correctly calibrated.

Go to sheet 2

These are landmarks. They show which part of the system has been proved correct.

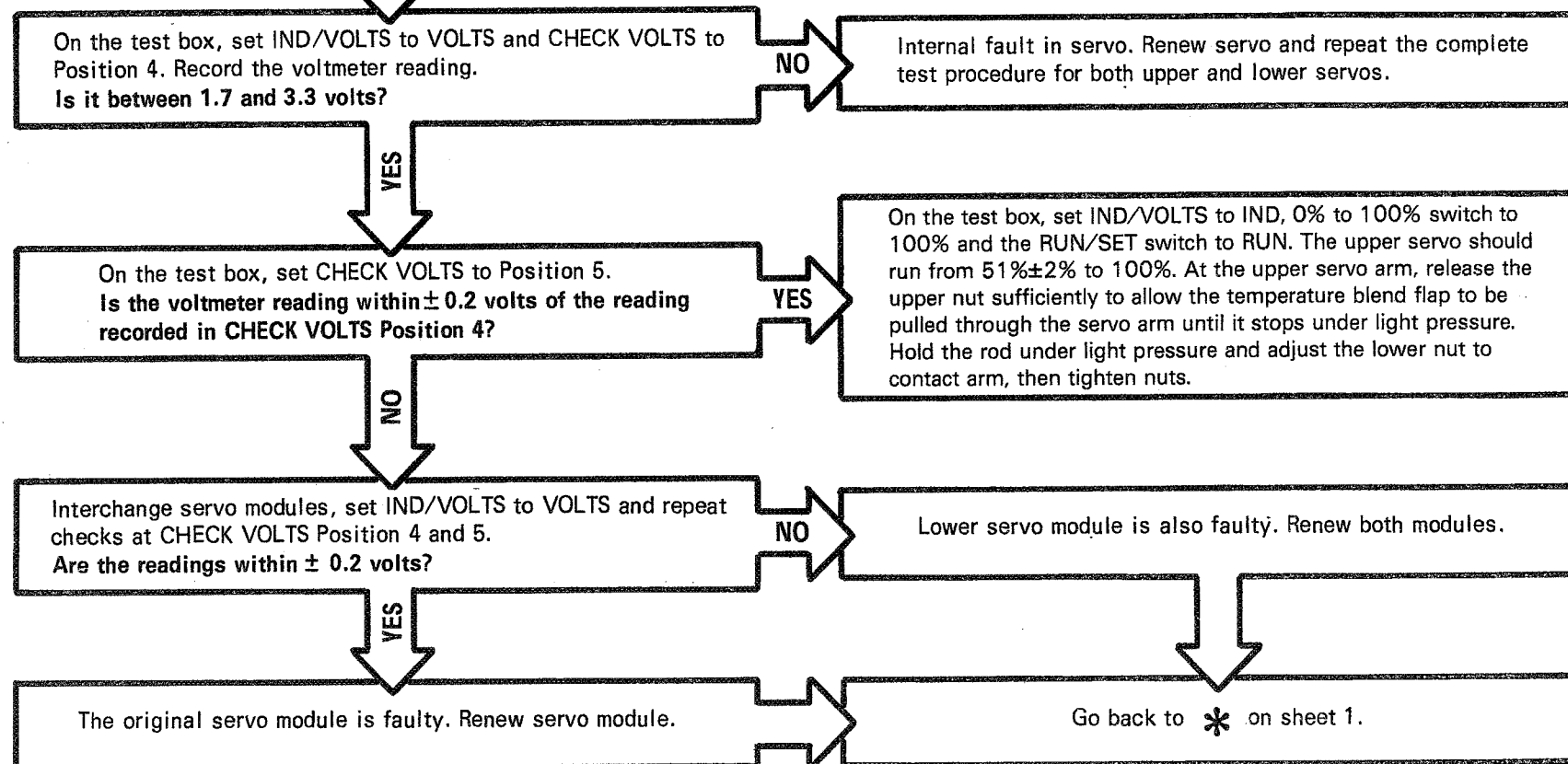


Oil pressure switch



Test box connection

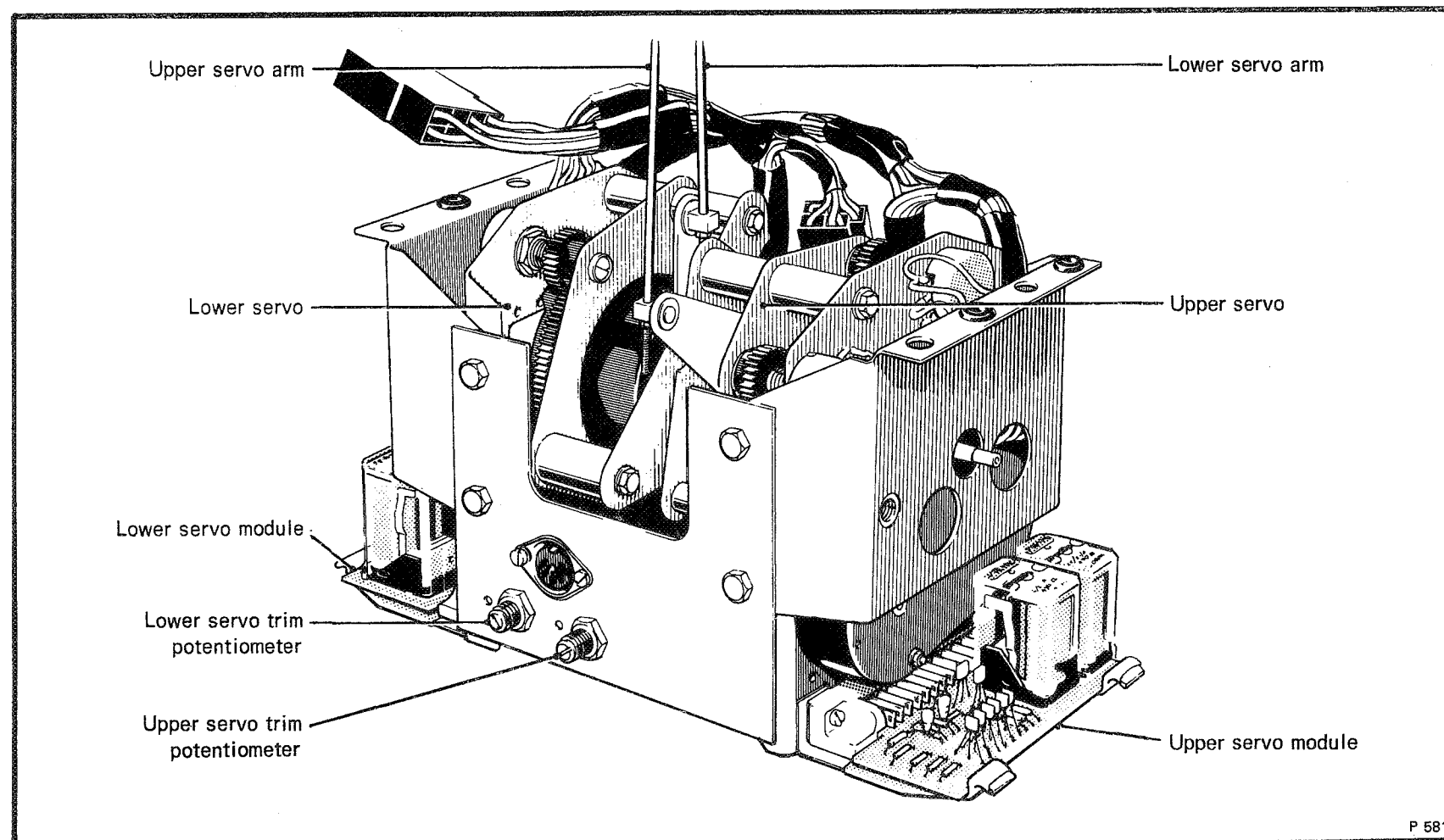
From sheet 1



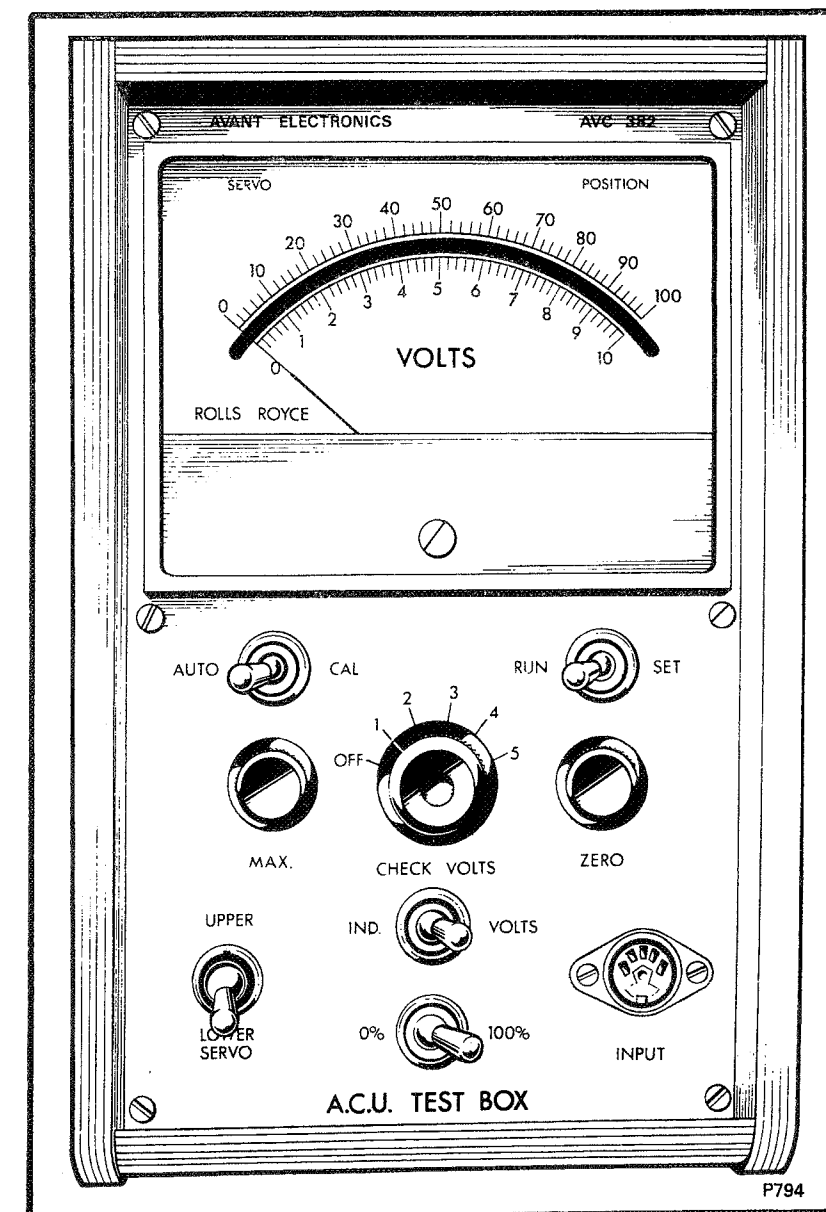
These are landmarks. They show which part of the system has been proved correct.

The upper temperature blend flap is now correctly set.

The upper servo and upper servo module are now proven to operate correctly from the test box. If a fault still exists, refer to the UPPER SENSOR CHAIN FAULT DIAGNOSIS



P 581



P794

Section C7

**System test and
fault diagnosis**

Upper servo test and calibration procedure

Sheet 2 of 2

Fig. C52 continued